

## Excellent Integrated System Limited

Stocking Distributor

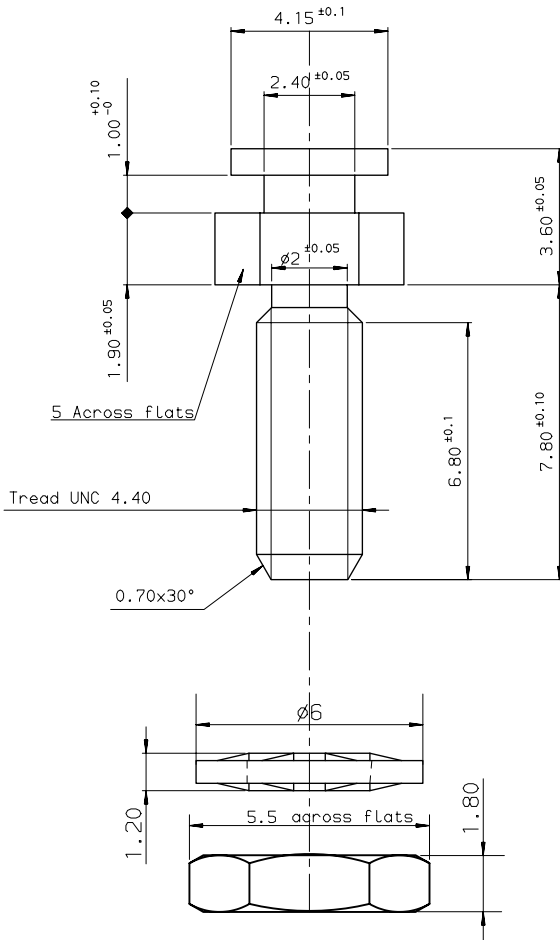
Click to view price, real time Inventory, Delivery & Lifecycle Information:

[FCI](#)  
[86308278TLF](#)

For any questions, you can email us directly:  
[sales@integrated-circuit.com](mailto:sales@integrated-circuit.com)

TECHNICAL CHARACTERISTICS :

- Screw locks: brass, tin plated .
- Locking washer: steel, tin plated .
- Nuts : steel, tin plated .
- Packaging : per 100 pieces .
- Corrosion resistance : 50 hour exposure to salt spray .
- For the plating codification see GS-15-005



**NOTE:RoHS INFORMATIONS.**  
 - The "LF" products meet European union Directives and other country regulations as described in GS-22-008.  
 - Plating 5n (pure bright ) over copper

TIN LEAD PART NUMBER 86308278T  
 LEAD FREE PART NUMBER 86308278TLF

European Views

www.fciconnect.com		surface 150 1302 ✓	tolerance std 150 406 ISO 1101		projection mm
		TOLERANCES UNLESS OTHERWISE SPECIFIED		size A3	Scale 10
Dr	MASSON	2000/08/08	ANGULAR	0.X	±0.1
Eng	MASSON	2000/08/08	LINEAR	0.XX	±0.1
Chr	M PESSON	2000/08/08	0.XX ±2°	0.XXX	±0.1
Appr	LEGARE	2000/08/08	Product family	D-SUB	Spec ref -
rev	ecn no	dr	date		
B	LS06-0026	LMA	2005/02/08		
C	LS06-0208	LGO	2006/12/12		
-	-	-	-		
-	-	-	-		
-	-	-	-		
-	-	-	-		
-	-	-	-		
-	-	-	-		
FCI			title	01/2	Rev.
			MOUNTING POSTS	C01-8655-1543	C
catalog no			-	CUSTOMER	sheet 1 of 1

REV F - 2008-04-17

1

2

3