

Excellent Integrated System Limited

Stocking Distributor

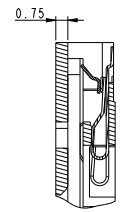
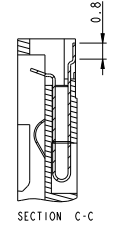
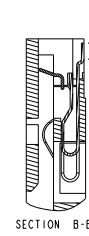
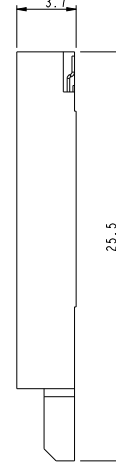
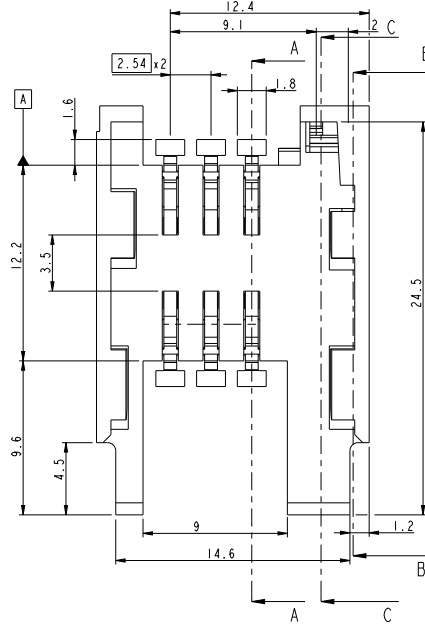
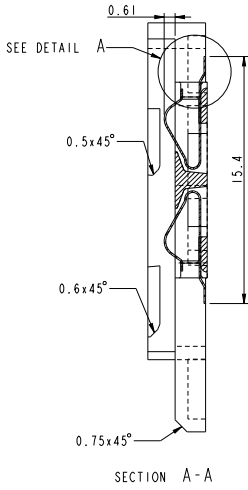
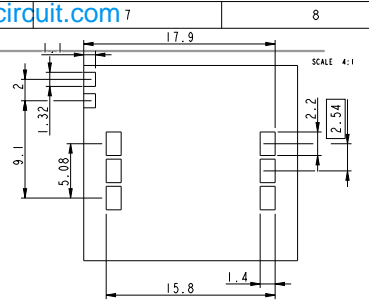
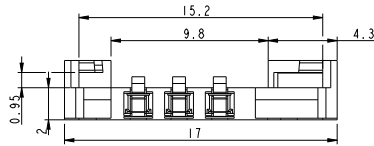
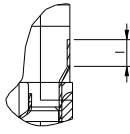
Click to view price, real time Inventory, Delivery & Lifecycle Information:

[FCI](#)
[7111S1615A02LF](#)

For any questions, you can email us directly:
sales@integrated-circuit.com

PART NUMBER
LEAD FREE VERSION
7111S1615A02LF

DETAIL A
SCALE 10:1



DETAIL OF SWITCH

LEAD FREE VERSION:

"This product meets European Union Directives and other country regulations as described in GS-22-008"

The housing will withstand exposure to 260°C peak temperature for 10 seconds in a convection reflow oven.

PROCESSING

Ni 2 µm
Gold 2.5 µm/Equivalent PdNi over Ni on contact area
Solder tail: Matte tin 2.5 µm (for lead free version)

GENERAL TOLERANCES:±0.1

www.fciconnect.com		surface	tolerance	std	projection	mm
		ISO 1302	ISO 486	ISO 1101		
		TOLERANCES UNLESS OTHERWISE SPECIFIED				
rev	rev no	dr	date	ANGULAR	LINEAR	size
01	-	JBB	1998-09-02	0.1	±	A2
A	-	-	2001-12-06	0.1x	±	ECN 109-0291
B	-	MPE	2002-03-06	0.1x	±	
C	LS2025	MPE	2002-05-04	0.1x	±	
D	105-0167	NT	2005-09-23	0.1x	±	
E	106-0121	DTK	2006-07-18	0.1x	±	
F	109-0291	10K	2009-12-29	0.1x	±	



SIMCARD CONNECTOR WITH SWITCH
TYPE S16

Rev. F
VJW_54479
CUSTOMER
sheet 1 of 1