

Excellent Integrated System Limited

Stocking Distributor

Click to view price, real time Inventory, Delivery & Lifecycle Information:

[FCI](#)
[85823-101LF](#)

For any questions, you can email us directly:
sales@integrated-circuit.com

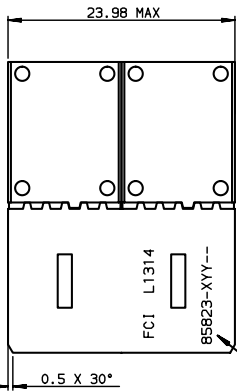
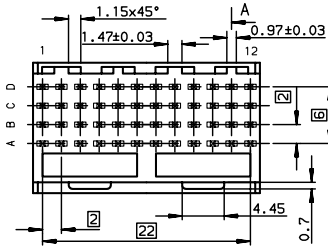
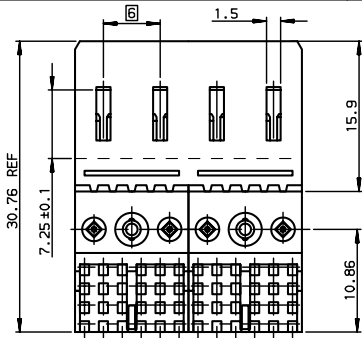
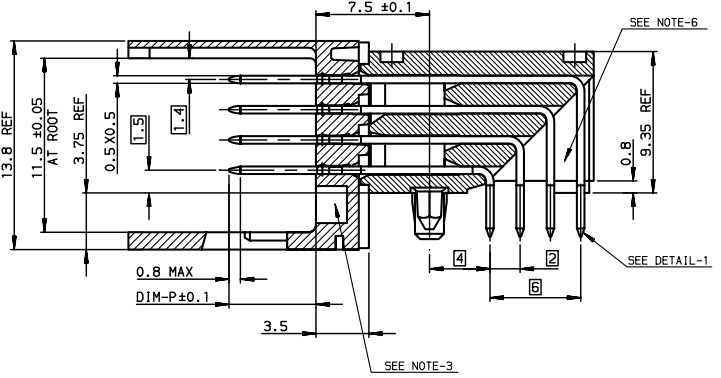
PART NUMBER	PERFORMANCE LEVEL
85823-1YY(LF)	STANDARD P/N, See Prod. Spec 6S-12-446
85823-3YY(LF)	CUSTOMER SPECIAL , Specific Plating

GENERAL CHARACTERISTICS AND ROHS INFORMATIONS:

SEE PRODUCT SPECIFICATION, 6S-12-446

- NOTE-2: ONE CENTER PEG FOR HOLD DOWN FORCE
 - NOTE-3: CODING RECESS FOR 8MM EXTENDED KEYS
 - NOTE-4: PRODUCT MARKING = PRODUCT NUMBER + FCI+DATE CODE
 - NOTE-5: PLATING ON MATING PART : SEE PROD SPEC 6S-12-446
 - NOTE-6: CENTRAL WALL WITH END REAR SUPPORT
 - NOTE-7: STANDARD PACKAGING IS TRAYS, MARKING IS WITHOUT "P" IN P/N, PACKAGING IS IN TRAYS, MARKING IS WITHOUT "P"
- Example: 85823-1xxPLF , marking 85823-1xxLF

SECTION-A SCALE 4/1



OTHERS INFORMATIONS, SEE DRW 85823-2

European Views

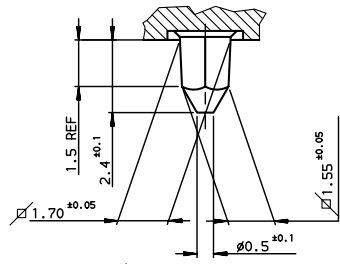
www.fciconnect.com		surface ISO 1302	tolerance std ISO 406 ISO 1101	projection mm	Scale 2.5:1
		TOLERANCES UNLESS OTHERWISE SPECIFIED		size A3	ECN LS07-0143
Dr	LENOIR	1991/04/21	ANGULAR	0.X	±0.1
Eng	LENOIR	1991/04/21	LINEAR	0.XX	±0.1
Chr	LEGARE	1991/04/21	0.XX*	0.XXX	±0.1
Appr	LEGARE	1991/04/21	Product family	METRAL	Spec ref -
FCI logo			METRAL RA HDR STB CONVERG		Rev. L
catalog no			NB 4x12 -2MODULES -FMLB LOADING		85823-1
			CUSTOMER		sheet 1 of 2

rev	ecn no	dr	date
E		CHA	2003/07/02
F	LS05-0056	MLE	2005/04/20
G	LS06-0075	LGO	2006/05/22
H	LS06-0114	LGO	2006/08/12
J	LS07-0003	LGO	2006/01/04
K	LS07-0134	MLE	2007/05/14
L	LS07-0143	MLE	2007/05/21

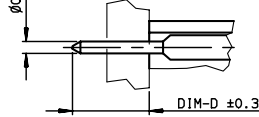
PART NUMBER / CONTACT LOADING						
DIM-P ±0.10				DIM-D ±0.30	TIN LEAD PART NUMBER	LEAD FREE PART NUMBER
ROW-A	ROW-B	ROW-C	ROW-D			
5.00	5.00	5.00	5.00	2.90	85823-X01	85823-X01LF
5.00	5.75	5.00	5.00	2.90	85823-X02	85823-X02LF
5.00	5.75	6.50	5.00	2.90	85823-X03	85823-X03LF
5.00	5.00	6.50	5.00	2.90	85823-X04	85823-X04LF
5.75	5.75	5.75	5.75	2.90	85823-X05	85823-X05LF
6.50	5.75	5.00	5.75	2.90	85823-X06	85823-X06LF
6.50	6.50	6.50	5.75	2.90	85823-X07	85823-X07LF
6.50	5.75	6.50	5.75	2.90	85823-X08	85823-X08LF
6.50	5.00	5.00	5.00	2.90	85823-X09	85823-X09LF
5.75	5.75	5.75	5.75	3.70	85823-X10	85823-X10LF
-	-	-	-	2.90	85823-X11	85823-X11LF

SEE NOTE-8

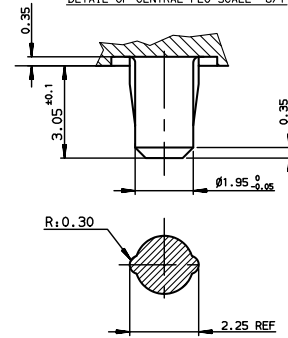
DETAIL OF LOCATING PEGS (2x) SCALE 8/1



DETAIL-1: SOLDER PIN



DETAIL OF CENTRAL PEG SCALE 8/1



NOTE-8: CONTACT LOADING SPECIF 85823-X11 (LF).

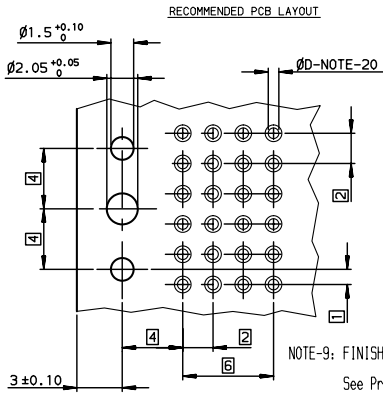
	1					12						
D	5.00	5.00	5.00	5.00	5.00	5.00	5.00	5.00	5.00	6.50	5.00	5.00
C	5.00	5.00	5.00	5.00	5.00	5.00	5.00	5.00	5.00	6.50	5.00	5.00
B	5.00	5.00	5.00	5.00	5.00	5.00	5.00	5.00	5.00	5.00	5.00	5.00
A	5.00	5.00	5.00	5.00	5.00	5.00	5.00	5.00	5.00	5.00	5.00	5.00

OTHERS INFORMATIONS, SEE DRW 85823-1

European Views

www.fciconnect.com		surface ISO 1302	tolerance std ISO 406 ISO 1101	projection mm
TOLERANCES UNLESS OTHERWISE SPECIFIED				
Dr	LENOIR	1994/04/21	ANGULAR	0.X ±0.1
Eng	LENOIR	1994/04/21	LINEAR	0.XX ±0.1
Chr	LEGARE	1994/04/21	0.XX ±2°	0.XXX ±0.1
Appr	LEGARE	1994/04/21	Product family	METRAL
			size	A3
			ECN	LS07-0143
			Spec ref	-
METRAL RA HDR STB CONVERG				Rev.
NB 4x12 -2MODULES -FMLB LOADING				L
catalog no				85823-2
				CUSTOMER sheet 2 of 2

rev	ecn no	dr	date
E	-	CHA	2003/07/02
F	LS05-0056	LGO	2005/04/20
G	LS06-0075	LGO	2006/05/22
H	LS06-0114	LGO	2006/08/12
J	LS07-0003	LGO	2007/01/04
K	LS07-0134	MLE	2007/05/14
L	LS07-0143	MLE	2007/05/21



NOTE-9: FINISH HOLE DIAMETER
See Prod Spec 65-12-446