

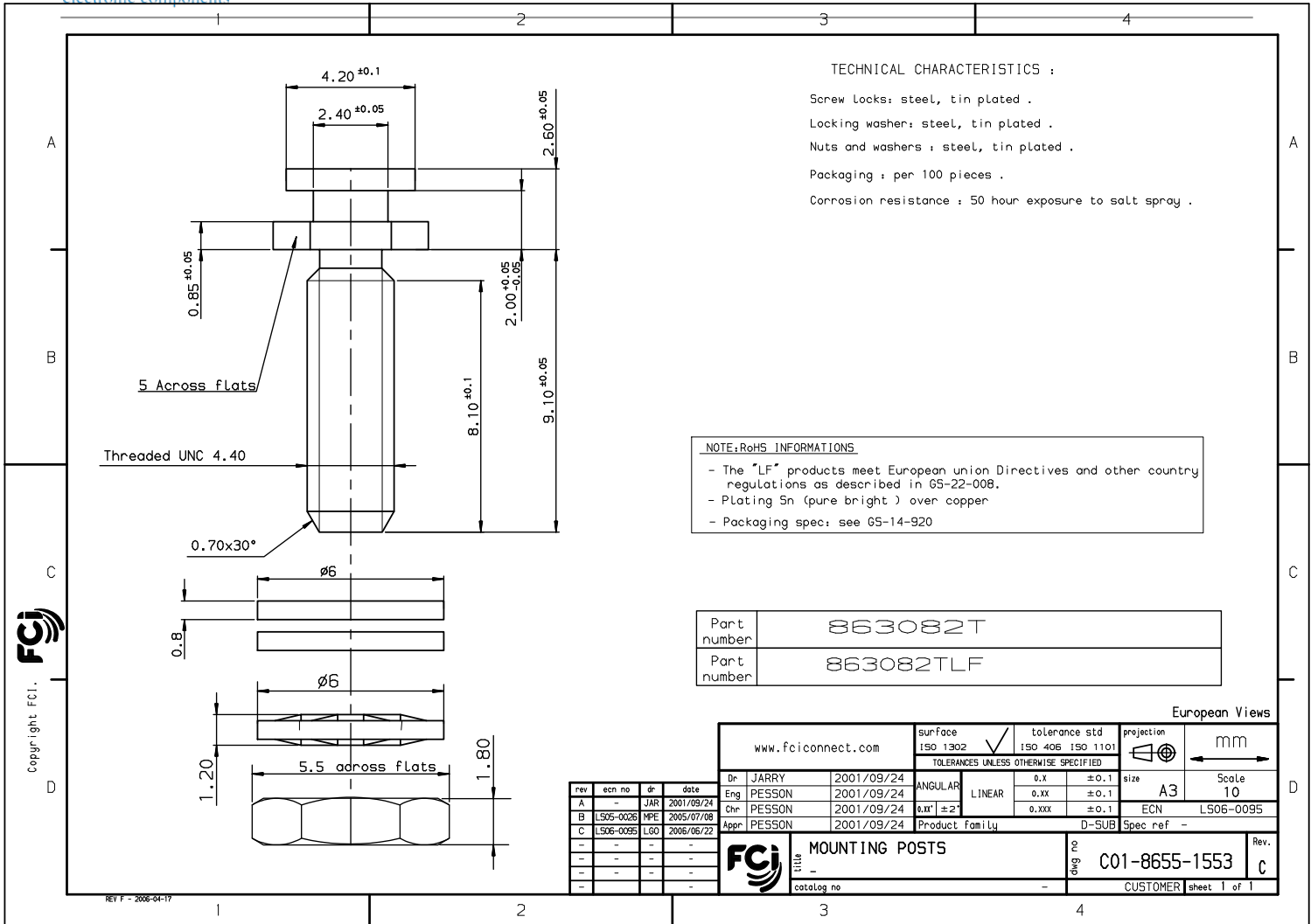
Excellent Integrated System Limited

Stocking Distributor

Click to view price, real time Inventory, Delivery & Lifecycle Information:

[FCI](#)
[863082TLF](#)

For any questions, you can email us directly:
sales@integrated-circuit.com



TECHNICAL CHARACTERISTICS :

- Screw locks: steel, tin plated .
- Locking washer: steel, tin plated .
- Nuts and washers : steel, tin plated .
- Packaging : per 100 pieces .
- Corrosion resistance : 50 hour exposure to salt spray .

NOTE:RoHS INFORMATIONS

- The "LF" products meet European union Directives and other country regulations as described in G5-22-008.
- Plating Sn (pure bright) over copper
- Packaging spec: see G5-14-920

Part number	863082T
Part number	863082TLF

rev		ecn no		dr		date		European Views													
www.fciconnect.com								surface	ISO 1302	tolerance std	ISO 406 ISO 1101	projection	mm								
								TOLERANCES UNLESS OTHERWISE SPECIFIED													
Dr	JARRY	2001/09/24	2001/09/24	2001/09/24	2001/09/24	2001/09/24	2001/09/24	ANGULAR	LINEAR	0.x	±0.1	size	A3	Scale	10						
Eng	PESSON	2001/09/24	2001/09/24	2001/09/24	2001/09/24	2001/09/24	2001/09/24	0.xx	±0.1	0.xxx	±0.1	ECN	LS06-0095								
Chr	PESSON	2001/09/24	2001/09/24	2001/09/24	2001/09/24	2001/09/24	2001/09/24	0.x x ±2"				Product Family	D-SUB	Spec ref	-						
Appr	PESSON	2001/09/24	2001/09/24	2001/09/24	2001/09/24	2001/09/24	2001/09/24														
								FCI				MOUNTING POSTS		title		C01-8655-1553		Rev.		C	
												catalog no				CUSTOMER		sheet 1 of 1			

REV F - 2006-04-17