



Excellent Integrated System Limited

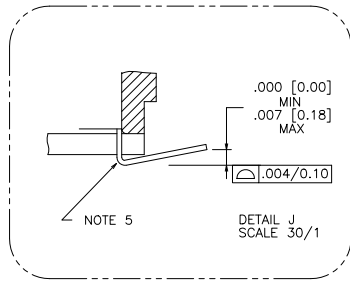
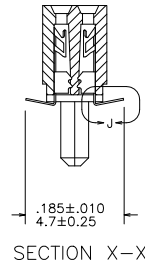
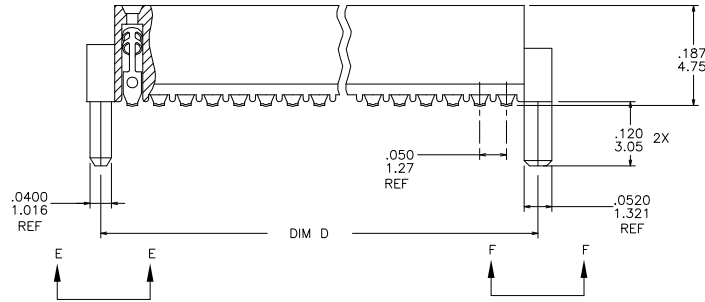
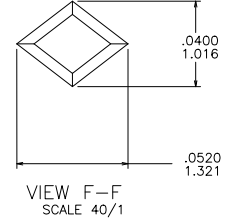
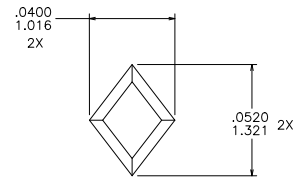
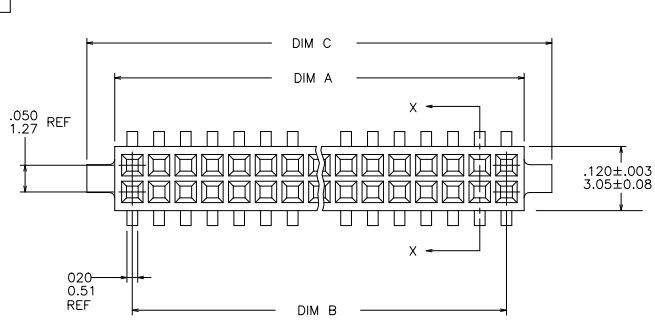
Stocking Distributor

Click to view price, real time Inventory, Delivery & Lifecycle Information:

[FCI](#)
[87814-615](#)

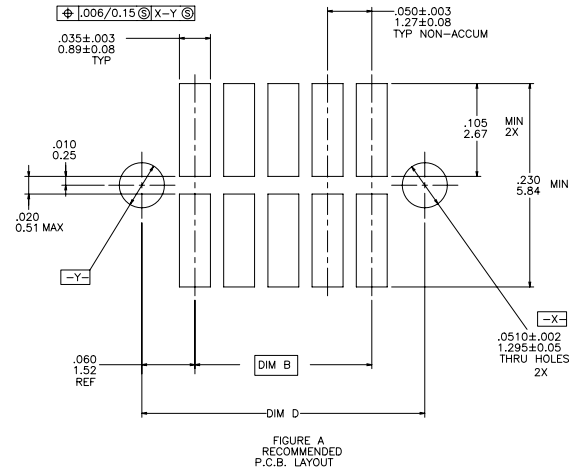
For any questions, you can email us directly:
sales@integrated-circuit.com

PRODUCT NUMBER
SEE TABLE



matl. code		surface		tolerance		projection		product family	
-		ISO 1302 ✓		ISO 406		ISO 1101		RIBCAGE	
tr	ecn no	dr	date	tolerances unless otherwise specified		INCH/MM		title	
M	V10994	DLW	3/9/01	angles	linear	.XXX:01/0.3		.050/1.27 CC V.C.C	
N	V11674	CRG	6/22/01	0°±2'		.XXX:005/0.13		SMT. W/HOLD DOWN	
P	M05-0123	ERE	6/10/05			.XXX:0.020/0.051		scale 4:1	
R	M06-0225	ERE	6/12/06	dr	M. CORNMAN	7/22/91		FCI	
S	M06-0370	MHT	9/26/06	engr	M. HAHN	7/22/91		dwg no	
T	M09-0058	CMR	4/06/09	chr	M. HAHN	7/22/91		sheet 1 of 2 size	
U	BX-N-010201	YO	2/8/12	appd	M. HAHN	7/22/91		87814	
sheet index	revision	U	U					A3	
	sheet	1	2					type Product Customer Drawing	

PRODUCT NUMBER NOTE 6 & 7	SIZE	DIM A	DIM B	DIM C	DIM D
87814-605	2 X 5	.266/6.76	.200/5.08	.370/9.40	.3200/8.128
-610	2 X 10	.516/13.11	.450/11.43	.620/15.75	.5700/14.478
-615	2 X 15	.766/19.46	.700/17.78	.870/22.10	.8200/20.828
-620	2 X 20	1.016/25.81	.950/24.13	1.120/28.45	1.0700/27.178
-625	2 X 25	1.266/32.16	1.200/30.48	1.370/34.80	1.3200/33.528
-630	2 X 30	1.516/38.51	1.450/36.83	1.620/41.15	1.5700/39.878
-635	2 X 35	1.766/44.86	1.700/43.18	1.870/47.50	1.8200/46.228
-640	2 X 40	2.016/51.21	1.950/49.53	2.120/53.85	2.0700/52.578
-645	2 X 45	2.266/57.56	2.200/55.88	2.370/60.20	2.3200/58.928
87814-650	2 X 50	2.516/63.91	2.450/62.23	2.620/66.55	2.5700/65.278



- NOTES:
- HOUSING MATERIAL:
GLASS FILLED THERMOPLASTIC FLAME RETARDANT PER UL 94V-0
COLOR: NATURAL
 - TERMINAL MATERIAL: BeCu
 - TERMINAL PLATING:
30u"/0.76u MIN HARD GOLD OR GXT OVER NI ON CONTACT ZONES.
100u"/2.54u MIN Sn OVER NI IN SOLDERING ZONES.
OTHERWISE GOLD FLASH OR UNPLATED
 - APPLICATION INFORMATION:
 - RECOMMENDED MOUNTING PAD PATTERN IS SHOWN IN FIGURE "A".
 - MATING PINS TO BE .0176/0.447 TO .0181/0.459 THICK.
 - MATING PIN TIPS TO BE IN TRUE POSITION TO MATING GRID WITHIN .008/0.20 DIA.
 - SUGGESTED MATING PIN LENGTH .130/3.30 ±.010/0.25.
 - LEAD TIPS TO BE ABOVE HEEL, UP TO .007/0.18 MAX. COPLANARITY TO BE MEASURED AT LOWEST POINT (HEEL).
 - ADD "CT" TO END OF DASH NUMBER FOR CONNECTOR WITH VACUUM CAP IN TUBE.
 - ADD "LF" SUFFIX AT THE END OF PART NUMBER FOR LEAD FREE OPTION.
 - THIS PRODUCT MEETS EUROPEAN UNION DIRECTIVES AND OTHER COUNTRY REGULATION AS DESCRIBED IN GS-22-008.
 - THE HOUSING WILL WITHSTAND EXPOSURE TO 260° PEAK TEMPERATURE FOR 20 SECONDS IN A CONVECTION INFRA-RED OR VAPOR PHASE REFLOW OVEN. SEE APPLICATION NOTES/PROCEDURES IF THEY ARE AVAILABLE.
 - PRODUCT SPECIFICATION PER BUS-12-087.

matl. code	surface	tolerance	projection	product family
-	ISO 1302	ISO 406	ISO 1101	RIBCAGE
tr	ecn no	dr	date	title
U				.050/1.27 CC V.C.C SMT. W/HOLD DOWN
	angles	linear	scale 4:1	dwg no
	0°±2'	.xxx±.01/0.3		sheet 2 of 2 size
		.xxx±.005/0.13		87814
		.xxx±.0020/0.051		A3
	dr	M. CORNMANN	7/22/91	type
	enrg	M. HAHN	7/22/91	Product Customer Drawing
	chr	M. HAHN	7/22/91	
	appd	M. HAHN	7/22/91	
sheet index	revision sheet			