

## Excellent Integrated System Limited

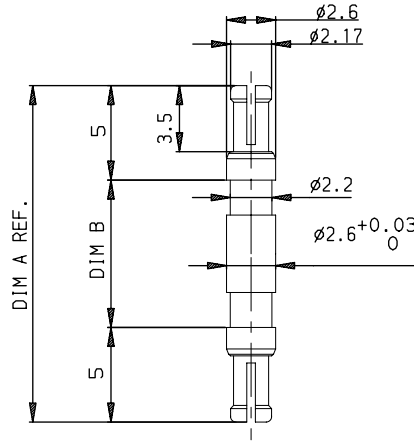
Stocking Distributor

Click to view price, real time Inventory, Delivery & Lifecycle Information:

[FCI](#)  
[85972-003LF](#)

For any questions, you can email us directly:  
[sales@integrated-circuit.com](mailto:sales@integrated-circuit.com)

LEAD-FREE P/N	PCB SIZE	DIM A	DIM B
85972-001LF	3.2	19.00	9.00
85972-002LF	2.4	18.20	8.20
85972-003LF	1.6	17.40	7.40
85972-004LF	4.0	19.80	9.80
85972-005LF	4.8	20.60	10.60
85972-006LF	5.6	21.40	11.40
85972-007LF	2.0	17.80	7.80



NOTES:

1. THIS PRODUCT WITH "LF" SUFFIX MEETS EUROPEAN UNION DIRECTIVES AND OTHER COUNTRY REGULATIONS AS DESCRIBED IN GS-22-008.
2. THE PRODUCT IS NOT INTENDED TO BE EXPOSED TO A MANUFACTURING SOLDER PROCESS.
3. PACKAGING SPEC: SEE GS-14-920

European Views

www.fciconnect.com				surface ISO 1302	tolerance std ISO 406 ISO 1101	projection A3	mm
				TOLERANCES UNLESS OTHERWISE SPECIFIED		size	Scale
Dr	GOISNARD	2006/03/06		ANGULAR	0.X	±0.1	5
Eng	GOISNARD	2006/03/06		LINEAR	0.XX	±0.1	
Chr	LEGARE	2006/03/06		0.XX ±2	0.XXX	±0.1	ECN
Appr	LEGARE	2006/03/06		Product family	METRAL	Spec ref	LS08-0057
rev	ecn no	dr	date	Product family		METRAL	Spec ref
C	LS06-0022	L60	2006/03/06	MINI POWER		85972	Rev.
D	LS07-0214	L60	2007/08/20	COUPLER CONTACT			E
E	LS08-0057	L60	2008/02/18	catalog no	-	CUSTOMER	sheet 1 of 1

REV F - 2008-04-17

1

2

3 PDM: Rev:E

STATUS Released

Printed: Oct 01, 2010



Copyright FCI.