

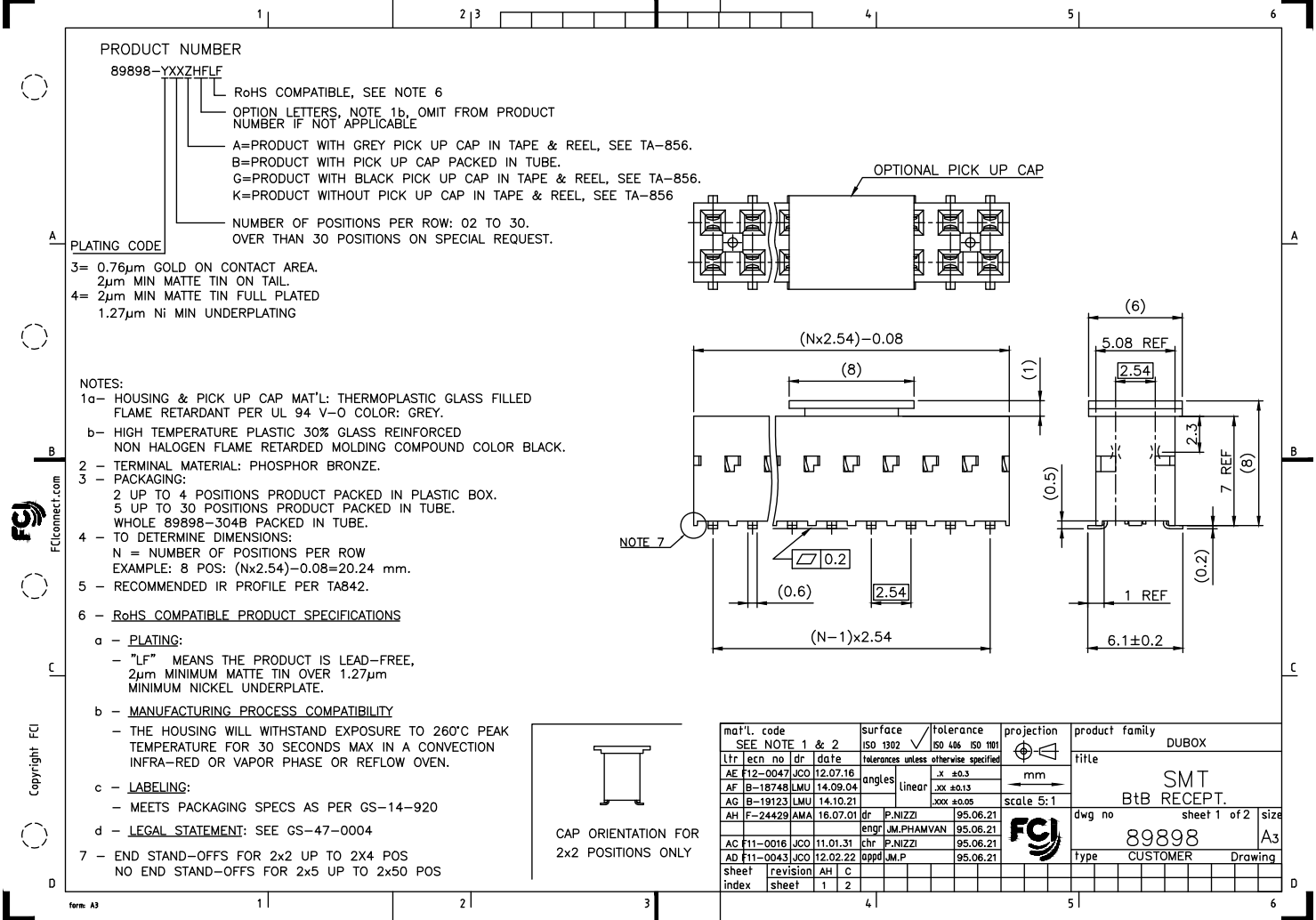
Excellent Integrated System Limited

Stocking Distributor

Click to view price, real time Inventory, Delivery & Lifecycle Information:

[FCI](#)
[89898-302LF](#)

For any questions, you can email us directly:
sales@integrated-circuit.com



PRODUCT NUMBER
89898-YXXZHFLF

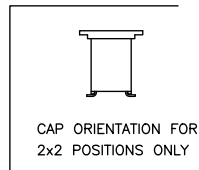
- RoHS COMPATIBLE, SEE NOTE 6
- OPTION LETTERS, NOTE 1b, OMIT FROM PRODUCT NUMBER IF NOT APPLICABLE
- A=PRODUCT WITH GREY PICK UP CAP IN TAPE & REEL, SEE TA-856.
- B=PRODUCT WITH PICK UP CAP PACKED IN TUBE.
- G=PRODUCT WITH BLACK PICK UP CAP IN TAPE & REEL, SEE TA-856.
- K=PRODUCT WITHOUT PICK UP CAP IN TAPE & REEL, SEE TA-856

PLATING CODE

- 3= 0.76µm GOLD ON CONTACT AREA.
2µm MIN MATTE TIN ON TAIL.
- 4= 2µm MIN MATTE TIN FULL PLATED
1.27µm Ni MIN UNDERPLATING

NOTES:

- 1a- HOUSING & PICK UP CAP MAT'L: THERMOPLASTIC GLASS FILLED FLAME RETARDANT PER UL 94 V-0 COLOR: GREY.
- b- HIGH TEMPERATURE PLASTIC 30% GLASS REINFORCED NON HALOGEN FLAME RETARDED MOLDING COMPOUND COLOR BLACK.
- 2 - TERMINAL MATERIAL: PHOSPHOR BRONZE.
- 3 - PACKAGING:
2 UP TO 4 POSITIONS PRODUCT PACKED IN PLASTIC BOX.
5 UP TO 30 POSITIONS PRODUCT PACKED IN TUBE.
WHOLE 89898-304B PACKED IN TUBE.
- 4 - TO DETERMINE DIMENSIONS:
N = NUMBER OF POSITIONS PER ROW
EXAMPLE: 8 POS: (N x 2.54) - 0.08 = 20.24 mm.
- 5 - RECOMMENDED IR PROFILE PER TA842.
- 6 - RoHS COMPATIBLE PRODUCT SPECIFICATIONS
 - a - PLATING:
- "LF" MEANS THE PRODUCT IS LEAD-FREE,
2µm MINIMUM MATTE TIN OVER 1.27µm MINIMUM NICKEL UNDERPLATE.
 - b - MANUFACTURING PROCESS COMPATIBILITY
- THE HOUSING WILL WITHSTAND EXPOSURE TO 260°C PEAK TEMPERATURE FOR 30 SECONDS MAX IN A CONVECTION INFRA-RED OR VAPOR PHASE OR REFLOW OVEN.
- c - LABELING:
- MEETS PACKAGING SPECS AS PER GS-14-920
- d - LEGAL STATEMENT: SEE GS-47-0004
- 7 - END STAND-OFFS FOR 2x2 UP TO 2x4 POS
NO END STAND-OFFS FOR 2x5 UP TO 2x50 POS

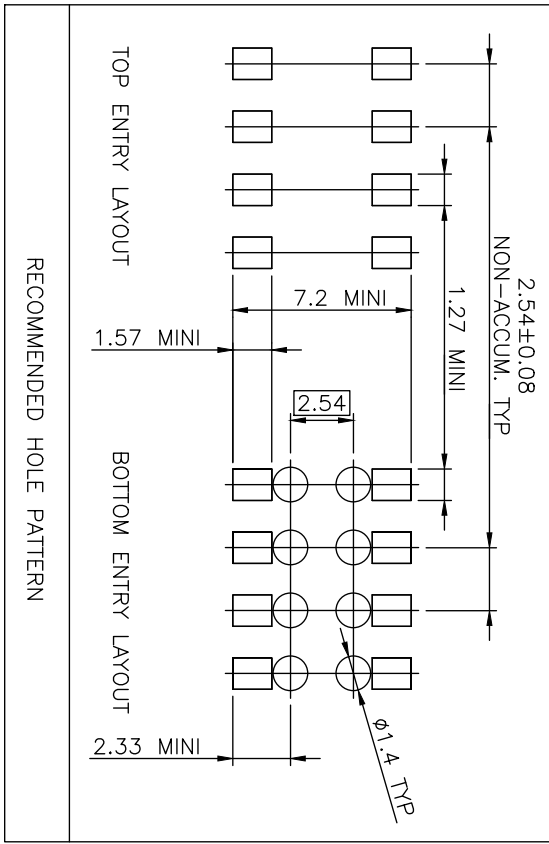


| | | | | |
|--------------------------|---------------------------------------|------------------|------------|------------------|
| mat'l. code | surface | tolerance | projection | product family |
| SEE NOTE 1 & 2 | ISO 1302 | ISO 406 ISO 1101 | | DUBOX |
| ltr ecn no dr date | tolerances unless otherwise specified | | mm | title |
| AE F12-0047 JCO 12.07.16 | angles | .x ±0.3 | mm | SMT |
| AF B-18748 LMU 14.09.04 | linear | .xx ±0.13 | mm | BtB RECEPT. |
| AG B-19123 LMU 14.10.21 | | .xxx ±0.05 | scale 5:1 | dwg no |
| AH F-24429 AMA 16.07.01 | dr | P.NIZZI | 95.06.21 | sheet 1 of 2 |
| | engr | JM.PHAMVAN | 95.06.21 | size |
| AC F11-0016 JCO 11.01.31 | chr | P.NIZZI | 95.06.21 | A3 |
| AD F11-0043 JCO 12.02.22 | appd | JM.P | 95.06.21 | type |
| sheet index | revision | AH C | | CUSTOMER Drawing |
| 1 | 2 | | | |



FCIconnect.com

Copyright FCI



PDS: Rev :AH STATUS:Released Printed: Jul 09, 2016

| | | | | |
|----------------|---------------------------------------|------------------|------------|------------------|
| mat'l. code | surface | tolerance | projection | product family |
| SEE NOTE 1 & 2 | ISO 1302 | ISO 406 ISO 1101 | mm | DUBOX |
| ltr | ecn no | dr | date | title |
| A | F04-0347 | DLE | 04.11.10 | SMT |
| B | F06-0204 | DLE | 06.06.23 | BtB RECEPT. |
| C | F11-0016 | JCO | 11.01.31 | scale 5:1 |
| | tolerances unless otherwise specified | angles | linear | mm |
| | | x ±0.3 | | |
| | | xx ±0.13 | | |
| | | .xxx ±0.05 | | |
| | dr | P.NIZZI | 95.06.21 | dwg no |
| | engr | JM.PHAMVAN | 95.06.21 | 89898 |
| | chr | P.NIZZI | 95.06.21 | sheet 2 of - |
| | appr | JM.P | 95.06.21 | A4 |
| sheet | revision | | | size |
| index | sheet | | | type |
| | | | | CUSTOMER Drawing |

form: A4

1

2