

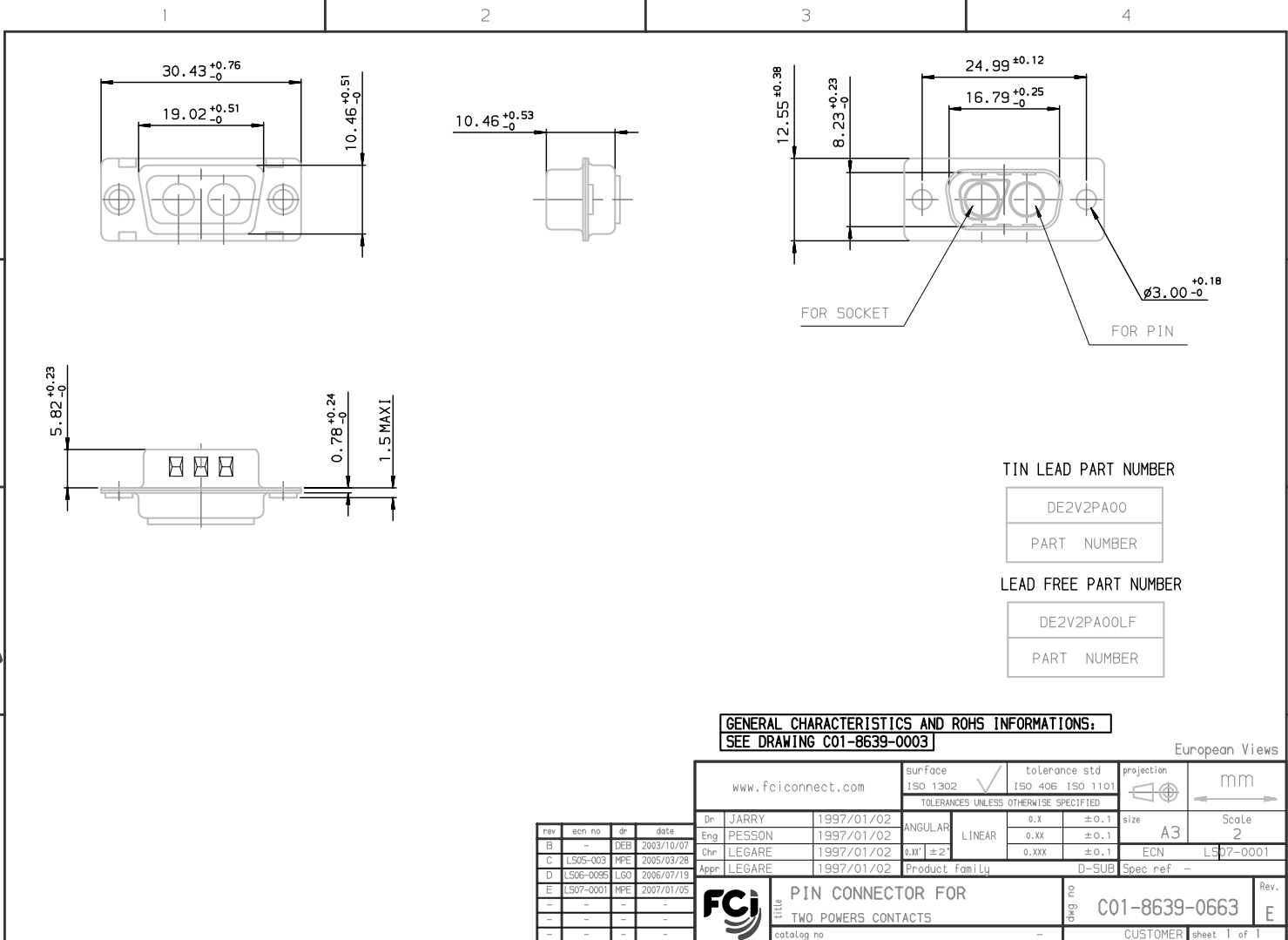
Excellent Integrated System Limited

Stocking Distributor

Click to view price, real time Inventory, Delivery & Lifecycle Information:

[FCI](#)
[DE2V2PA00LF](#)

For any questions, you can email us directly:
sales@integrated-circuit.com



TIN LEAD PART NUMBER

DE2V2PA00
PART NUMBER

LEAD FREE PART NUMBER

DE2V2PA00LF
PART NUMBER

GENERAL CHARACTERISTICS AND ROHS INFORMATIONS:
SEE DRAWING C01-8639-0003

European Views

www.fciconnect.com		surface ISO 1302	tolerance std ISO 406 ISO 1101	projection mm
		TOLERANCES UNLESS OTHERWISE SPECIFIED		
Dr	JARRY	1997/01/02	ANGULAR	size A3
Eng	PESSON	1997/01/02	LINEAR	Scale 2
Chr	LEGARE	1997/01/02	0.x" ±2'	ECN L07-0001
Appr	LEGARE	1997/01/02	0.xxx ±0.1	Product family D-SUB
		Spec ref -		
		TITLE PIN CONNECTOR FOR TWO POWERS CONTACTS		Rev. E
catalog no		chg no C01-8639-0663		CUSTOMER sheet 1 of 1

rev	ecn no	dr	date
B	-	DEB	2003/10/07
C	LS05-003	MPE	2005/03/28
D	LS06-0055	LGO	2006/07/19
E	LS07-0001	MPE	2007/01/05
-	-	-	-
-	-	-	-

REV F - 2006-04-17

Copyright FCI