



Distributor of FCI: Excellent Integrated System Limited

Datasheet of D15S13B6UA00LF - D-Sub Connector Receptacle, Female Sockets 15 Position Through Hole, Right Angle Solder

Contact us: sales@integrated-circuit.com Website: www.integrated-circuit.com

Excellent Integrated System Limited

Stocking Distributor

Click to view price, real time Inventory, Delivery & Lifecycle Information:

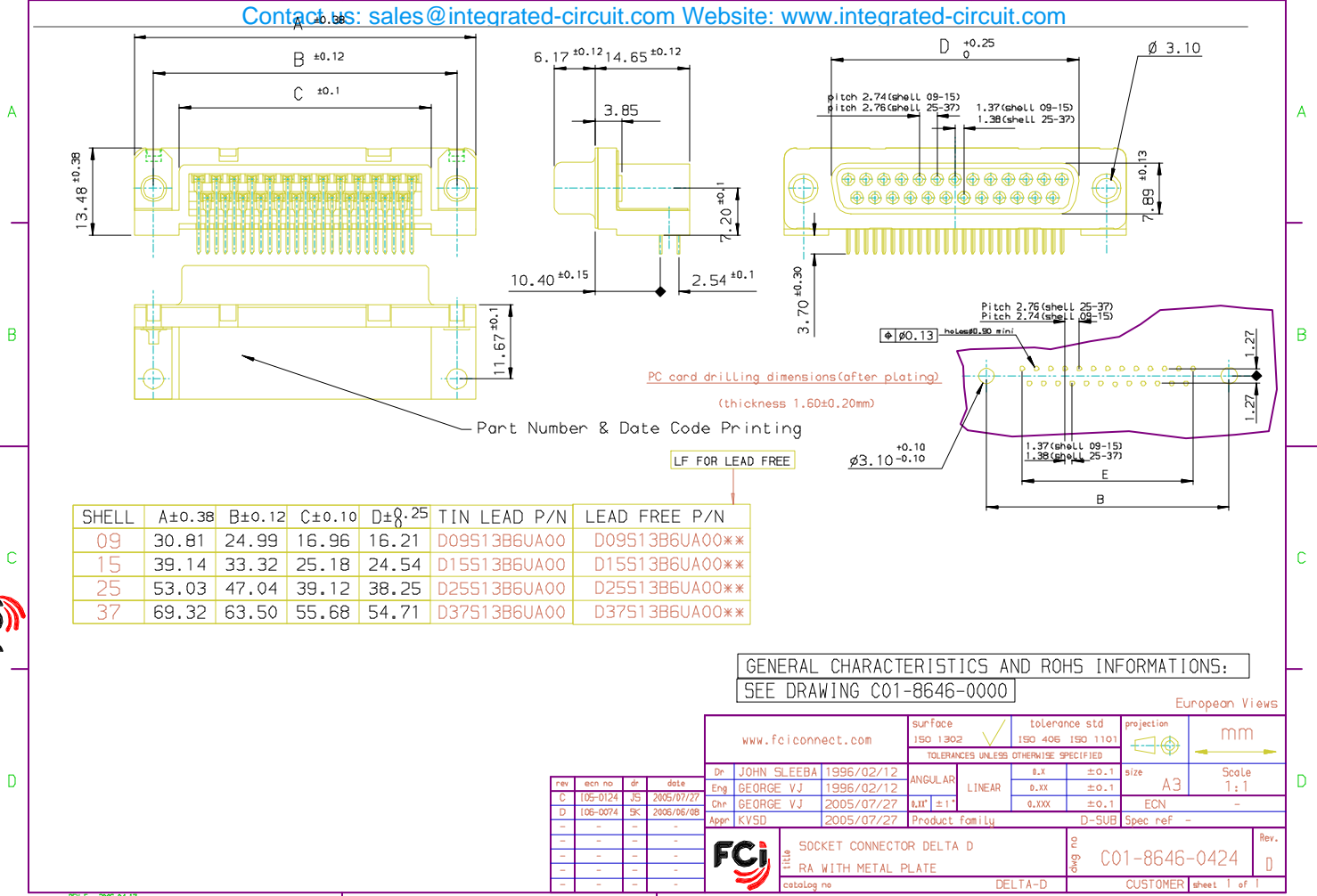
[FCI](#)

[D15S13B6UA00LF](#)

For any questions, you can email us directly:

sales@integrated-circuit.com

Contact us: sales@integrated-circuit.com Website: www.integrated-circuit.com



SHELL	A±0.38	B±0.12	C±0.10	D±0.25	TIN LEAD P/N	LEAD FREE P/N
09	30.81	24.99	16.96	16.21	D09S13B6UA00	D09S13B6UA00**
15	39.14	33.32	25.18	24.54	D15S13B6UA00	D15S13B6UA00**
25	53.03	47.04	39.12	38.25	D25S13B6UA00	D25S13B6UA00**
37	69.32	63.50	55.68	54.71	D37S13B6UA00	D37S13B6UA00**

GENERAL CHARACTERISTICS AND ROHS INFORMATIONS:
SEE DRAWING C01-8646-0000

www.fciconnect.com		surface	tolerance std	projection	mm
		ISO 1302	ISO 406 ISO 1101		
		TOLERANCES UNLESS OTHERWISE SPECIFIED			
Dr	JOHN SLEEBA	1996/02/12	ANGULAR	LINEAR	size A3 Scale 1:1
Eng	GEORGE VJ	1996/02/12			
Chr	GEORGE VJ	2005/07/27	MIT ±1		ECN -
Appr	KVSD	2005/07/27	Product Family		D-SUB Spec ref -
FCI		Title		dwg no	Rev.
		SOCKET CONNECTOR DELTA D RA WITH METAL PLATE		C01-8646-0424	D
catalog no		DELTA-D		CUSTOMER	sheet 1 of 1

rev	ecm no	dr	date
C	05-0124	JS	2005/07/27
D	06-0074	SK	2006/06/08
-	-	-	-
-	-	-	-
-	-	-	-
-	-	-	-

REV F - 2006-04-17