



**Distributor of FCI: Excellent Integrated System Limited**

Datasheet of D25P24B6GL00LF - D-Sub Connector Plug, Male Pins 25 Position Through Hole Solder

Contact us: [sales@integrated-circuit.com](mailto:sales@integrated-circuit.com) Website: [www.integrated-circuit.com](http://www.integrated-circuit.com)

---

## **Excellent Integrated System Limited**

Stocking Distributor

Click to view price, real time Inventory, Delivery & Lifecycle Information:

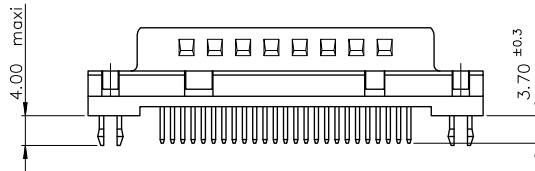
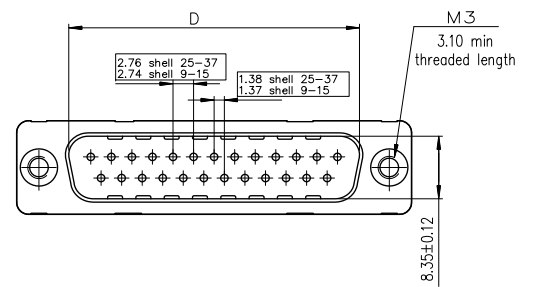
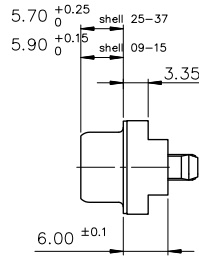
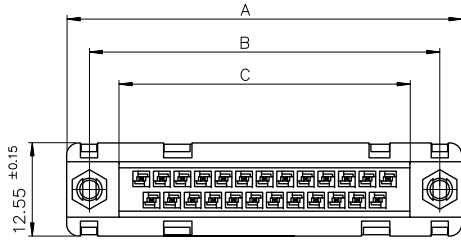
[FCI](#)

[D25P24B6GL00LF](#)

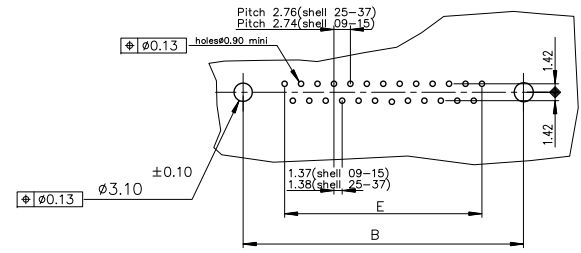
For any questions, you can email us directly:

[sales@integrated-circuit.com](mailto:sales@integrated-circuit.com)

Contact us: [sales@integrated-circuit.com](mailto:sales@integrated-circuit.com) Website: [www.integrated-circuit.com](http://www.integrated-circuit.com)



PC card drilling dimensions(after plating)  
(thickness 2.40±0.20mm)



LEAD FREE PART NUMBER

SHELL	A±0.38	B±0.12	C±0.10	D±0.25	E±0.07	PART NUMBER
09	30.81	24.99	16.96	16.79	10.96	D09P24B.GL00LF
15	39.14	33.32	25.18	25.12	19.18	D15P24B.GL00LF
25	53.03	47.04	39.12	38.84	33.12	D25P24B.GL00LF
37	69.32	63.50	55.68	55.30	49.68	D37P24B.GL00LF

Protection: 4 --> Flash Au  
6 --> 0.76µ Au

GENERAL CHARACTERISTICS AND ROHS INFORMATIONS:  
SEE DRAWING C01-8646-0000

mat'l. code	surface	tolerance	projection	product family
	iso 1302	iso 406	ISO 1101	D-SUB
lfr	ecn no	dr	date	title
F	ELX-121654	AB	2015-10-26	MALE DELTA-D STRAIGHT, SOLDER TYPE
				dwg no
				C01-8646-0106
				sheet 1 of 1
				size
				A3
sheet index	revision sheet	F	1	type
				Product Customer Drawing