



**Distributor of FCI: Excellent Integrated System Limited**

Datasheet of D50P91C4GV00LF - D-Sub Connector Plug, Male Pins 50 Position Through Hole Press-Fit

Contact us: [sales@integrated-circuit.com](mailto:sales@integrated-circuit.com) Website: [www.integrated-circuit.com](http://www.integrated-circuit.com)

---

## **Excellent Integrated System Limited**

Stocking Distributor

Click to view price, real time Inventory, Delivery & Lifecycle Information:

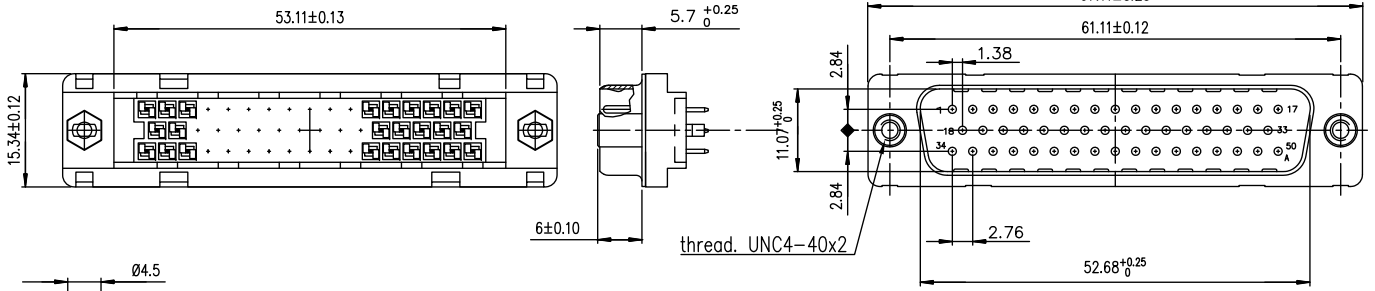
[FCI](#)

[D50P91C4GV00LF](#)

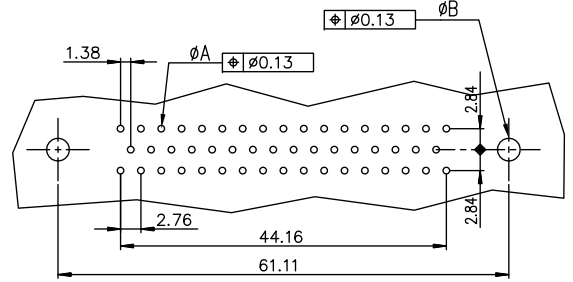
For any questions, you can email us directly:

[sales@integrated-circuit.com](mailto:sales@integrated-circuit.com)

Contact us: [sales@integrated-circuit.com](mailto:sales@integrated-circuit.com) Website: [www.integrated-circuit.com](http://www.integrated-circuit.com)



PC board drilling dimensions  
(after plating - thickness: 1.60 to 3.20 mm)



ROHS PART NUMBER	
PART NUMBER	
200 Mating	D50P91C4GV00LF
500 Mating	D50P91C6GV00LF

GENERAL CHARACTERISTICS AND ROHS INFORMATIONS:

SEE DRAWING C01-8646-0001

mat'l. code		surface		tolerance		projection		product family	
		ISO 1302	ISO 406	ISO 1101	ISO 1101	mm		D-SUB	
ltr	ecn no	dr	date	tolerances unless otherwise specified		mm		title	
E	LS06-0074	MPE	2006-05-09	angles	.0±0.1			MALE CONNECTOR DELTA D 50	
F	LS06-0097	LGO	2006-07-29	linear	.00±0.1			STRAIGHT PRESS FIT	
G	LS06-0140	LGO	2006-09-22	0°±2°	.000±0.1	scale 2:1		dwg no	
H	111-0062	MINI	2011-04-04	dr	PESSON	1995-10-03	Amphenol		sheet 1 of 1
J	ELX-1-24020	AAB	2016-06-06	engr	MITHUN PAUL	2016-06-06	FCI		size
				chr	ATHUL A.B	2016-06-06			A3
				appd	BIJU K PAUL	2016-06-06			type
									Product Customer Drawing
sheet index	revision	sheet	J						
		1							

PDS: Rev :J

STATUS:Released

Printed: Jun 07, 2016