

## Excellent Integrated System Limited

Stocking Distributor

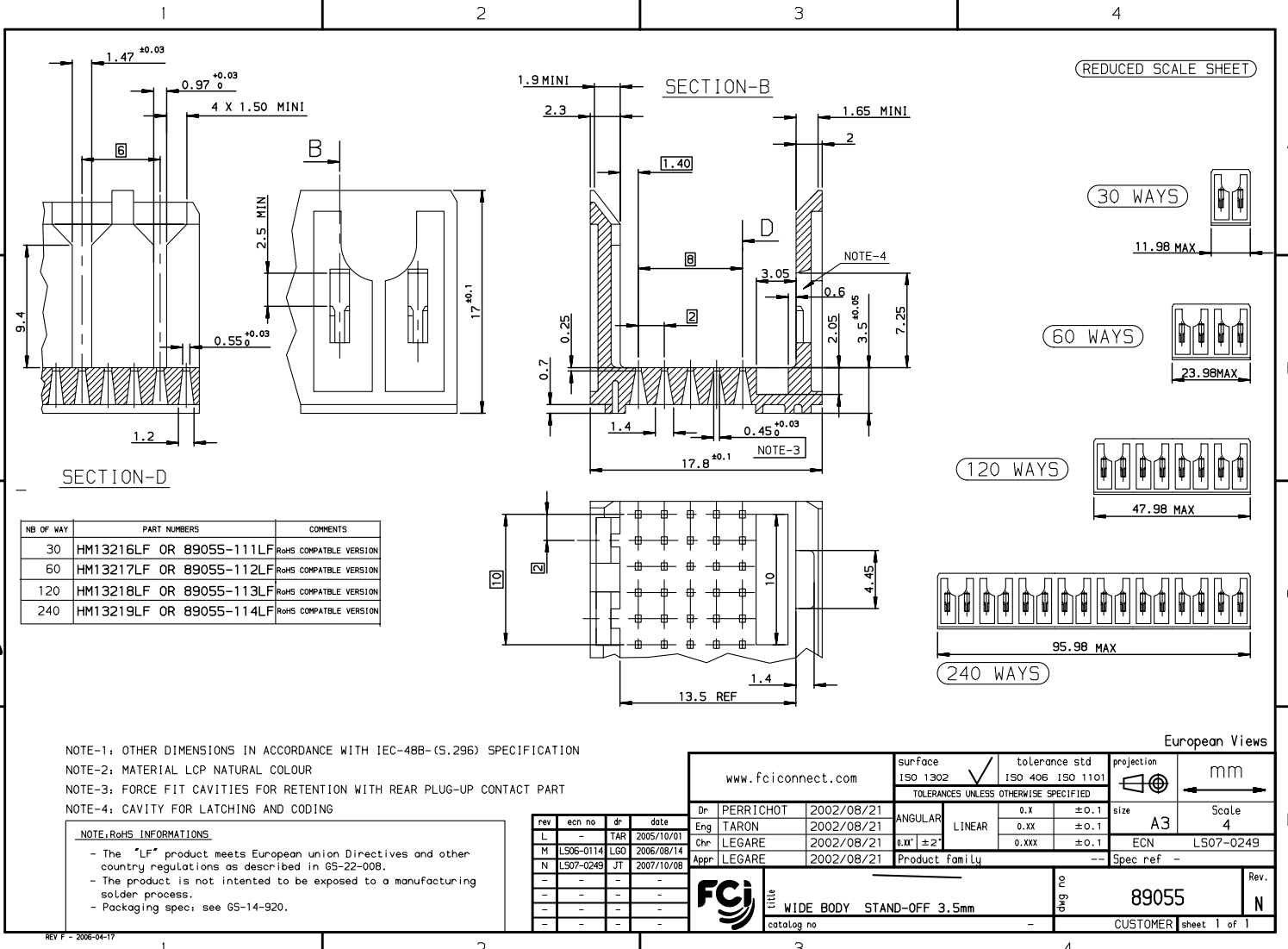
Click to view price, real time Inventory, Delivery & Lifecycle Information:

[FCI](#)

[HM13218LF](#)

For any questions, you can email us directly:

[sales@integrated-circuit.com](mailto:sales@integrated-circuit.com)



NB OF WAY	PART NUMBERS	COMMENTS
30	HM13216LF OR 89055-111LF	RoHS COMPATIBLE VERSION
60	HM13217LF OR 89055-112LF	RoHS COMPATIBLE VERSION
120	HM13218LF OR 89055-113LF	RoHS COMPATIBLE VERSION
240	HM13219LF OR 89055-114LF	RoHS COMPATIBLE VERSION

NOTE-1: OTHER DIMENSIONS IN ACCORDANCE WITH IEC-48B-(S.296) SPECIFICATION  
 NOTE-2: MATERIAL LCP NATURAL COLOUR  
 NOTE-3: FORCE FIT CAVITIES FOR RETENTION WITH REAR PLUG-UP CONTACT PART  
 NOTE-4: CAVITY FOR LATCHING AND CODING

**NOTE:RoHS INFORMATIONS**

- The "LF" product meets European union Directives and other country regulations as described in 65-22-008.
- The product is not intended to be exposed to a manufacturing solder process.
- Packaging spec: see 65-14-920.

www.fciconnect.com		surface ISO 1302	tolerance std ISO 406 ISO 1101	projection mm	Scale 4
		TOLERANCES UNLESS OTHERWISE SPECIFIED		size A3	ECN LS07-0249
Dr	PERRICHOT	2002/08/21	ANGULAR	0.X	±0.1
Eng	TARON	2002/08/21	LINEAR	0.XX	±0.1
Chr	LEGARE	2002/08/21	0.XX	±2°	±0.1
Appr	LEGARE	2002/08/21	Product family		Spec ref -
FCI		WIDE BODY STAND-OFF 3.5mm		89055	
catalog no				CUSTOMER sheet 1 of 1	

rev	ecn no	dr	date
L		TAR	2005/10/01
M	LS06-0114	LGO	2006/08/14
N	LS07-0249	JT	2007/10/08
-	-	-	-
-	-	-	-
-	-	-	-
-	-	-	-

Copyright FCI.