

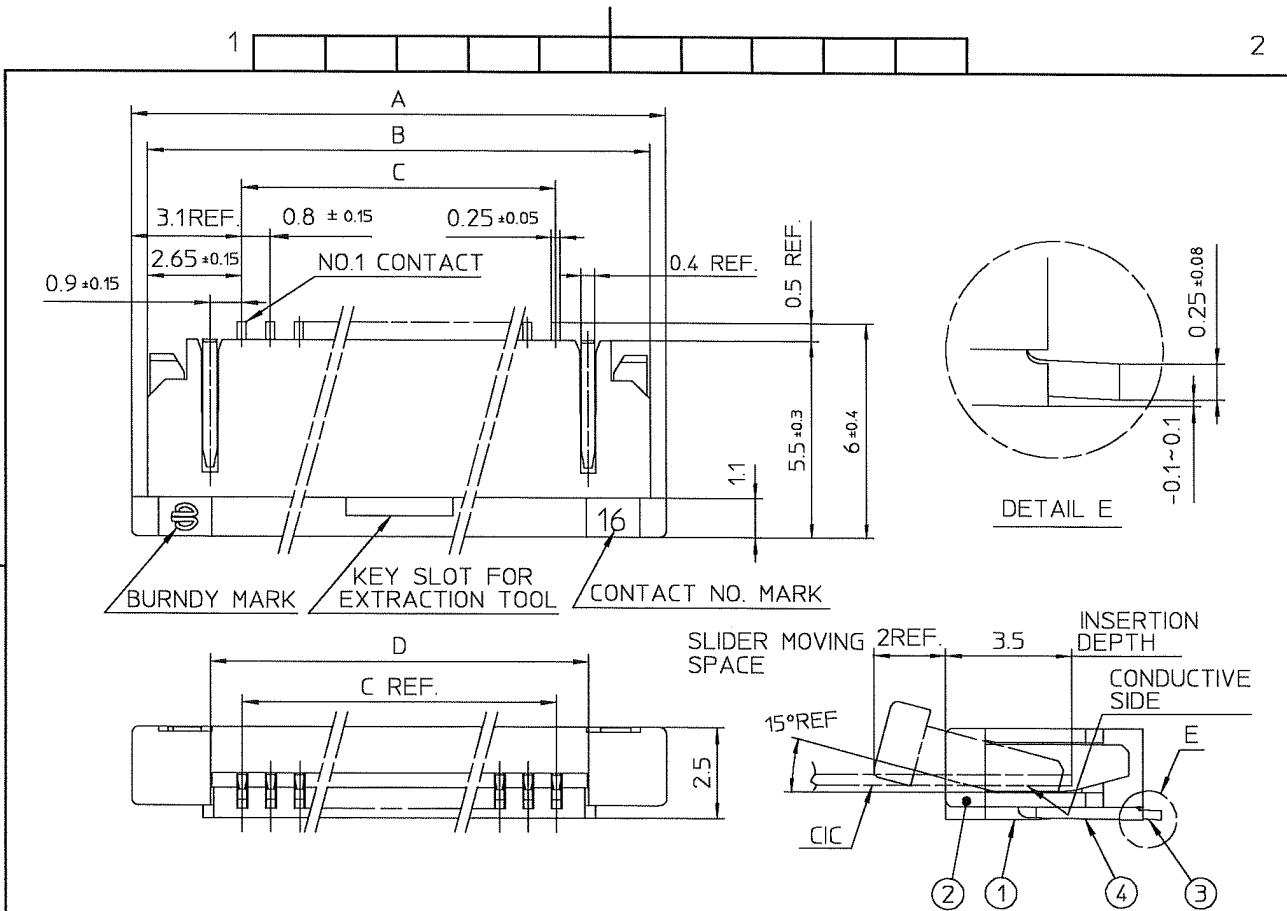
## Excellent Integrated System Limited

Stocking Distributor

Click to view price, real time Inventory, Delivery & Lifecycle Information:

[FCI](#)  
[SFR20R-5STE1](#)

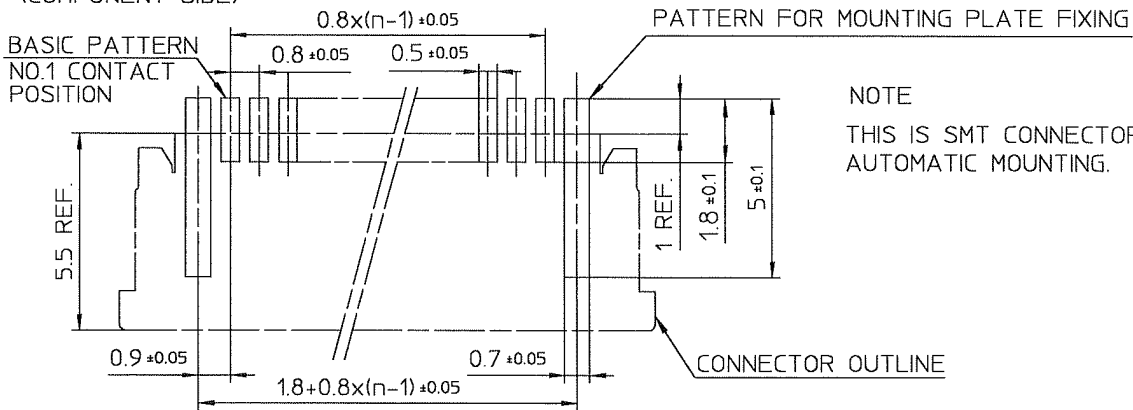
For any questions, you can email us directly:  
[sales@integrated-circuit.com](mailto:sales@integrated-circuit.com)



PT. NO.	PARTS NAME	MATERIAL	Q'TY	NOTE
1	HOUSING	PPS RESIN GLASS REINFORCED (UL94V-0)	1	COLOR : BLACK
2	SLIDER		1	COLOR : BEIGE
3	CONTACT	PHOSPHOR BRONZE	n	PLATING : TIN ALLOY
4	MOUNTING PLATE		2	

n : NO. OF CONTACTS

RECOMMENDED PC BOARD LAYOUT  
 (COMPONENT SIDE)



NOTE  
 THIS IS SMT CONNECTOR FOR AUTOMATIC MOUNTING.

mat'l. code				surface ISO 1302 ✓	tolerance ISO 406 ISO 1101	projection 	product family 58BF		
ltr	ecn no	dr	date	tolerances unless otherwise specified		scale X	title 0.8mm SPACING CONNECTOR FOR CIC (CAT.No.SFR__R-5ST__)		
AA	J04-0357	H.T	Oct.13/04	angles	±0.2				
AB	J06-0485	H.T	11/20/06	linear					
				dr	<i>H. Hoshino</i> 11/20/06		dwg no	sheet 1 of 1	size
				enr	<i>H. Hoshino</i> 11/20/06		JSA 92931		A4
				chr	<i>K. Shoji</i> 11/20/06		type	Product Customer Drawing	
				appd	<i>S. Hoshino</i> 11/21/06				
sheet index	revision sheet	AB	1					Rev	AB