



Distributor of FCI: Excellent Integrated System Limited

Datasheet of DAV7W2S300H30LF - D-Sub Connector Receptacle, Female Sockets 7 (5 + 2 Power) Position Through Hole Solder

Contact us: sales@integrated-circuit.com Website: www.integrated-circuit.com

Excellent Integrated System Limited

Stocking Distributor

Click to view price, real time Inventory, Delivery & Lifecycle Information:

[FCI](#)

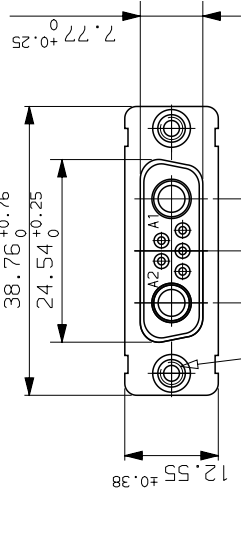
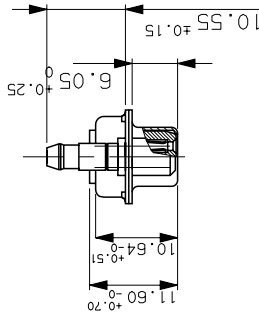
[DAV7W2S300H30LF](#)

For any questions, you can email us directly:

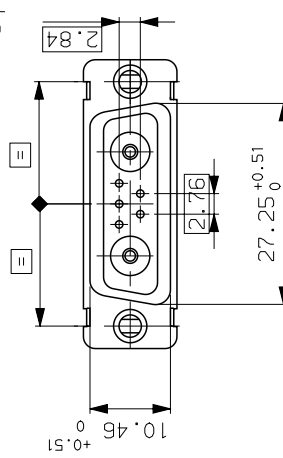
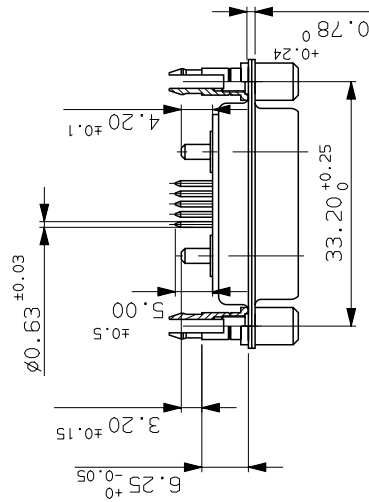
sales@integrated-circuit.com

GENERAL CHARACTERISTICS : SEE DRAWING C01-8639-0000

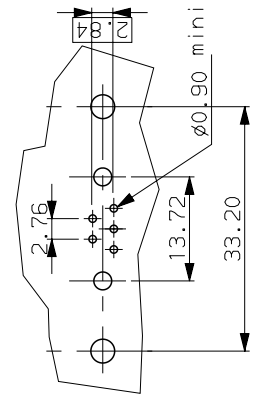
DAV7W2S300H30	UNC 4.40
DAI7W2S300H30	M3
PART NUMBER	Threaded A



Threaded A



LAYOUT DIMENSIONS (after plating)
CONNECTOR SIDE VIEW



b 01/10/03	update	
ISS DATE	Lastest modification by : DEBRAY.T	
Designed by : JARRY	date:05/01/01	Type of drawing: CLIENT
Checked by : FONTENEAU	date: ---	Released by: ---
TITLE : SOCKET CONNECTOR WITH TWO POWERS CONTACTS		
SCALE	Special mfg:--	MATERIAL:--
1.5	item List n°: --	N°: --
General linear Tolerances: --	General machining surface texture: --	Geometrical Tolerances: see NF E 04-552
<p>FRAMATOME CONNECTORS FRANCE Rue Louis Breguet - BP 05 72024 LE MANS Cedex Tel. 33 (16) 43.84.08.43</p>		
<p>This document is the property of FRAMATOME CONNECTORS FRANCE. It must not be reproduced or communicated without permission in writing. Flow the owners.</p>		
FORMAT	SOURIAU DRG N°	PROJECT
A3	C01-8639-1803	M94D001

