



Distributor of FCI: Excellent Integrated System Limited

Datasheet of DEMF09S - D-Sub Connector Receptacle, Female Sockets 9 Position Free Hanging (In-Line) Solder Cup

Contact us: sales@integrated-circuit.com Website: www.integrated-circuit.com

Excellent Integrated System Limited

Stocking Distributor

Click to view price, real time Inventory, Delivery & Lifecycle Information:

[FCI](#)

[DEMF09S](#)

For any questions, you can email us directly:

sales@integrated-circuit.com

Contact us: sales@integrated-circuit.com Website: www.integrated-circuit.com

DBML25S043

REFERENCE SPECIFICATIONS

-NFC 93425 (in compliance with HE 501)

PHYSICAL CHARACTERISTICS

-INSULATOR MATERIAL: THERMOPLASTIC UL94 V-0

-CONTACT MATERIAL: PHOSPHOR BRONZE
GOLD OVER NICKEL

-ACCESSORIES: BRASS.cadmium plated yellow passivation

-SHELLS: STEEL.cadmium plated yellow passivation

ELECTRICAL CHARACTERISTICS

-NOMINAL CURRENT: 7.5A

-CONTACT RESISTANCE: <= 7.3 m ohms

-CONTACT/CONTACT : >=1000 V

-CONTACT/GROUND : >=1200 V

-INSULATION RESISTANCE: >=5000 MOhms

ENVIRONMENTAL CHARACTERISTICS

- CLIMATIC CATEGORY: 55/125/56

TEMPERATURE RANGE -55°C TO +125°C

DAMP HEAT STEADY STATE 56 DAYS

SALT SPRAY 48 HOURS

MECHANICAL CHARACTERISTICS

- RETENTION AGAINST TORQUE: - Threaded insert: 0.7 N.m minimum

- Female screw : 0.5 N.m minimum

Series

Shell size: **E A B C D**
see sheet 2

Front accessory definition
see sheet 2

- Blank** :without accessory
- F** :floating mounting
- L** :threaded insert M3
- O** :threaded insert UNC 4-40
- V** :female screw UNC 4-40
- I** :female screw M3

Contact number (see sheet 2)

9,15,25,37,50

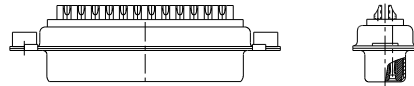
Contacts

S :Socket

Plating

Blank :solder bucket 500 matings/unmatings

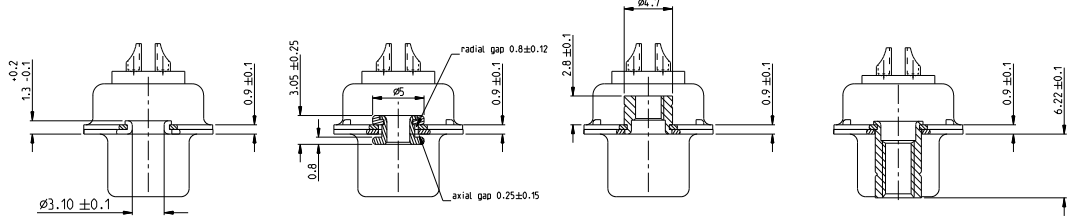
043 :solder bucket 500 matings/unmatings
for harsh environment



25 WAY for Example

www.fciconnect.com		surface	tolerance std	projection	mm
		ISO 1902	ISO L90 ISO 1901	ISO 1901	
		TOLERANCES UNLESS OTHERWISE SPECIFIED		size	Scale
		ANGULAR	0.xx	±0.3	A2
		LINEAR	0.xx	±0.1	
			0.xxx	±0.05	EEN L507-0273
					Spec.ref
rev	ech no	dt	date	Dr	Dr
A	L506-0174	MPE	2006/11/14	Eng	H. PÉSSON
B	L507-0273	MPE	2007/08/02	Chr	P. LÉGARÉ
C	L507-0273	MPE	2007/06/20	Appr	P. LÉGARÉ
D	F40-0072	LSA	2010/07/20		
FCI		SUB FEMALE DM HE501 series		of	Rev.
catalog no		with solder bucket		C01-8637-1733	D
				CUSTOMER	sheet 1 of 4

Contact us: sales@integrated-circuit.com Website: www.integrated-circuit.com



FRONT ACCESSORY	Blank without	F floating mounting	L insert M3 O insert UNC 4.40	V female screw UNC 4.40 I female screw M3
-----------------	----------------------	----------------------------	--	--

PART NUMBER	FRONT ACCESSORY
D*MxxS	without
D*MFxxS	floating mounting
D*MLxxS	insert M3
D*MOxxS	insert UNC 4.40
D*MVxxS	female screw UNC 4.40
D*MIxxS	female screw M3

shell size	Contact number
*	XX
E	09
A	15
B	25
C	37
D	50

PART NUMBER	FRONT ACCESSORY
D*MxxS043	without
D*MFxxS043	floating mounting
D*MLxxS043	insert M3
D*MOxxS043	insert UNC 4.40
D*MVxxS043	female screw UNC 4.40
D*MIxxS043	female screw M3

CROSS REFERENCES HE501 and FCI

HE501 P/N	FCI P/N	FRONT ACCESSORY
HE501NxxAS	D*MxxS	without
HE501FxxAS	D*MFxxS	floating mounting

SCALE:4

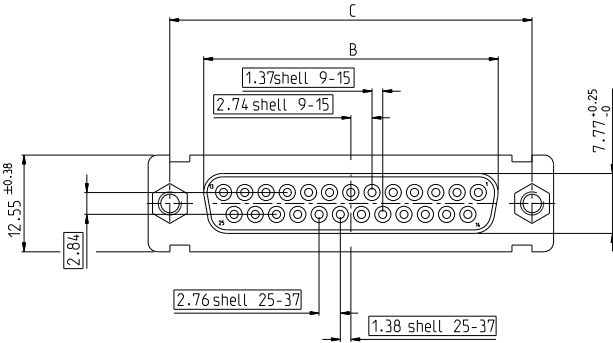
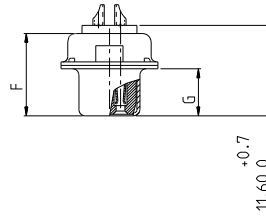
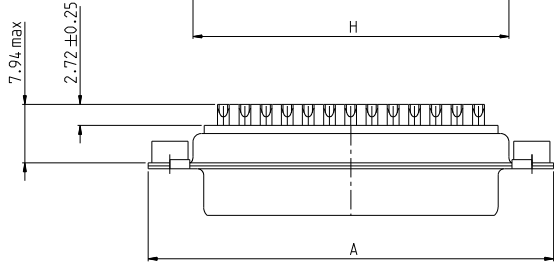
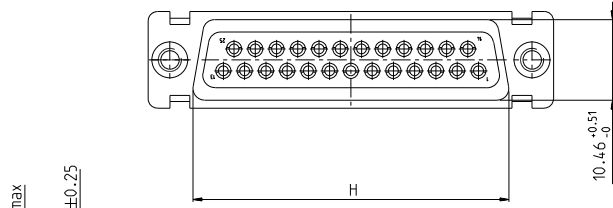
www.fciconnect.com		surface ISO 1902	tolerance std ISO 1904	projection	mm
TOLERANCES UNLESS OTHERWISE SPECIFIED		ANGULAR	LINEAR	size	Scale
Dr	M. PÉSSON 2006/11/14	0.xx	±0.3	A2	2:1
Eng	P. LÉGARÉ 2006/11/14	0.xx	±0.1	ECN	LS07-0273
Chr	P. LÉGARÉ 2006/11/14	0.xxx	±0.05	-	Spec. ref
Appr	P. LÉGARÉ 2006/11/14	Product Family	-	-	-
FCI SUB FEMALE DM HE501 series		of	C01-8637-1733	Rev.	D
with solder bucket		of	CUSTOMER	sheet 2 of 4	

Contact us: sales@integrated-circuit.com Website: www.integrated-circuit.com

DIMENSIONS FOR SHELL E.A.B.C

Dimensions are in millimeters

Shell size	Number of contacts	A ^{+0.76} ₋₀	B ^{+0.25} ₋₀	C ± 0.12	F ^{+0.57} ₋₀	G ^{+0.25} ₋₀	H ^{-0.51} ₋₀
E	09	30.43	16.21	24.99	10.64	6.05	19.02
A	15	38.76	24.54	33.32	10.64	6.05	27.25
B	25	52.65	38.25	47.04	10.64	6.05	41.02
C	37	68.94	54.71	63.50	10.64	6.05	57.45



scale 3

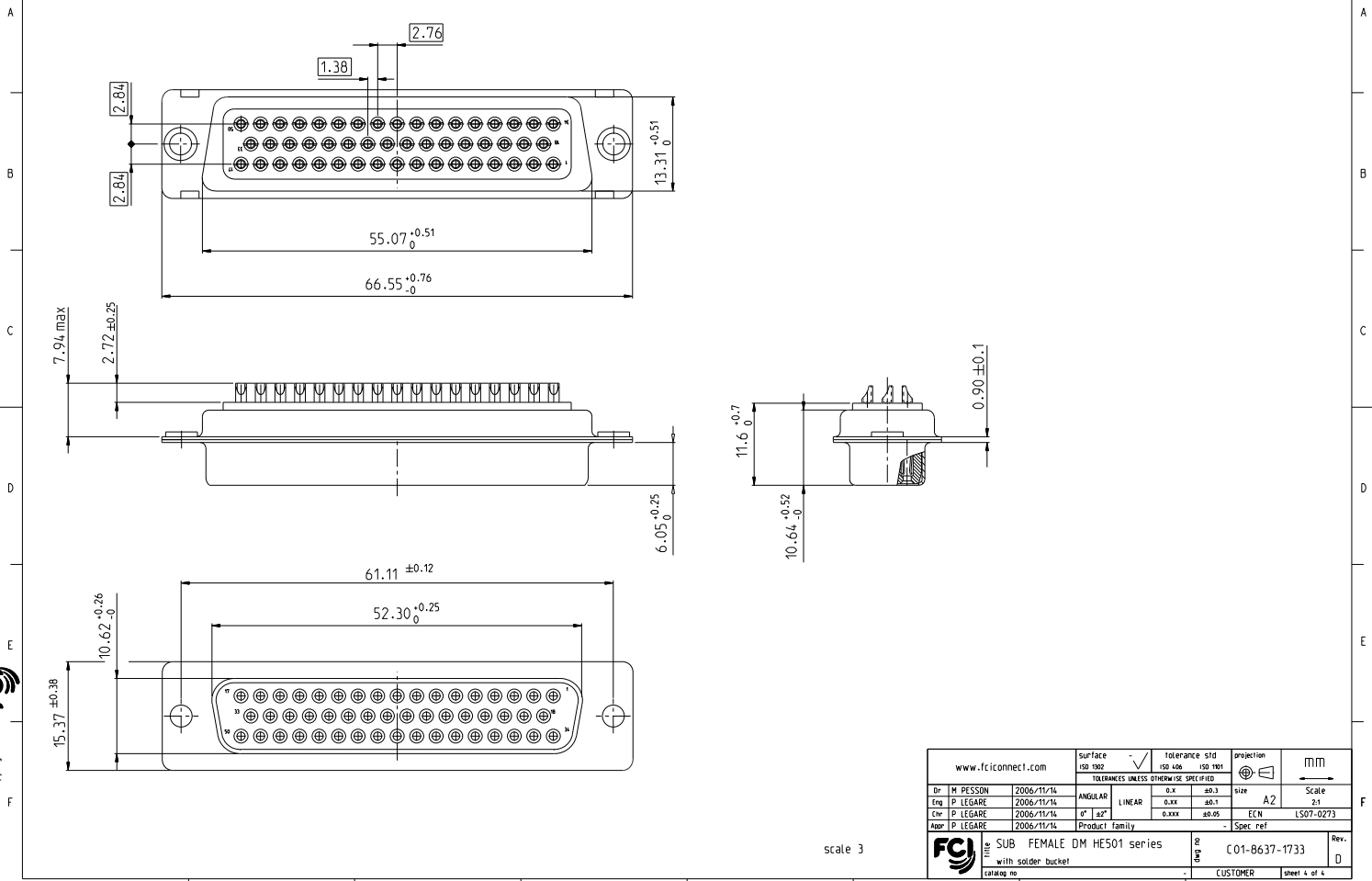
www.fciconnect.com		surface ISO 1902	tolerance std ISO 1904	projection ISO 1101	mm
TOLERANCES UNLESS OTHERWISE SPECIFIED		ANGULAR	LINEAR	size A2	Scale 2:1
Dr: M. PÉSSON	2006/11/14	0.xx	±0.3	ECN	LS07-0273
Eng: P. LÉGARÉ	2006/11/14	0.xx	±0.1	Spec. ref	
Chr: P. LÉGARÉ	2006/11/14	0.xxx	±0.05		
App: P. LÉGARÉ	2006/11/14				
Product Family					
FCI SUB FEMALE DM HE501 series		with solder bucket		C01-8637-1733	
catalog no		CUSTOMER		sheet 3 of 4	

PDS: Rev: D

PDM: Rev: A US: Released US: Released Printed on 06/28/2015

Contact us: sales@integrated-circuit.com Website: www.integrated-circuit.com

DIMENSIONS FOR SHELL SIZE D (50 CONTACTS)



Copyright FCI

www.fciconnect.com		surface ISO 1902	tolerance std ISO 1101	projection ISO 1101	mm
TOLERANCES UNLESS OTHERWISE SPECIFIED					
Dr	M. PÉSSON	2006/11/14	ANGULAR	0.xx	±0.3
Eng	P. LÉGARÉ	2006/11/14	LINEAR	0.xx	±0.1
Chr	P. LÉGARÉ	2006/11/14	0°	0.xxx	±0.05
Appr	P. LÉGARÉ	2006/11/14	Product family	-	Spec. ref
FCI SUB FEMALE DM HE501 series with solder bucket		of part	C01-8637-1733		Rev. D
catalog no		CUSTOMER		sheet 4 of 4	

scale 3