

Excellent Integrated System Limited

Stocking Distributor

Click to view price, real time Inventory, Delivery & Lifecycle Information:

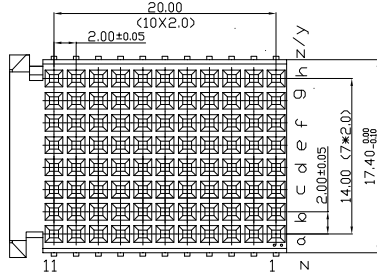
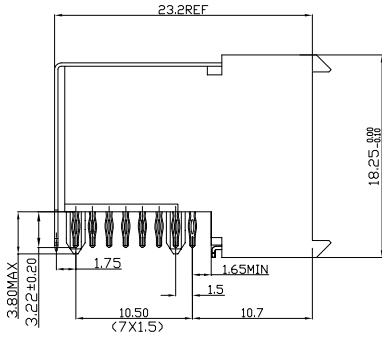
[FCI](#)
[HM2R89PA8101N9LF](#)

For any questions, you can email us directly:
sales@integrated-circuit.com

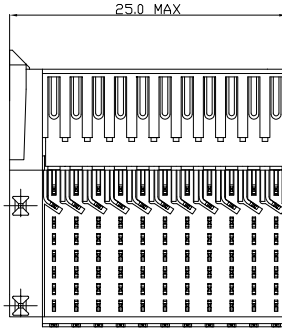
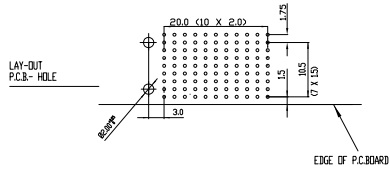
Tous droits strictement réservés. Reproduction ou communication à des tiers interdite sous quelque forme que ce soit sans autorisation écrite du Propriétaire. Propriété de c FCI. Droits de reproduction FCI.



All rights strictly reserved. Reproduction or issue to third parties in any form whatever is not permitted without written authority from the proprietor. Property of FCI. Copyright FCI.



PERFORMANCE CHARACTERISTICS
 CURRENT RATING 1.5A AT 20°C (FULLY LOADED)
 1 A AT 70°C (FULLY LOADED)
 RATED VOLTAGE 500 V AC (CONT /CONT)
 OPERATING TEMPERATURE -55°C TO 125°C
 CONTACT RESISTANCE 20 MΩ MAX
 INSERTION FORCE 0.75N MAX/CONT
 EXTRACTION FORCE 0.15N MIN/CONT
 INSULATION RESISTANCE 10⁴ MΩ MIN



- NOTES 1'**
- 1. LEAD FREE INDICATOR LF=LEAD FREE
 - PERFORMANCE LEVEL INDICATOR (REF 246 N2305 200443003)
 - 2. THIS PRODUCT IS CSA APPROVED. THIS PRODUCT IS UL RECOGNIZED.
 - 3. FOR RECOMMENDED PTH DIMENSIONS REFER DRAWING : BSA201572.001
 - 4. THIS PRODUCT (LF) MEETS EUROPEAN UNION DIRECTIVES AND OTHER COUNTRY REGULATIONS AS DESCRIBED IN GS-22-008

www.fciconnect.com		tolerance 1DEC +0.2 1DEC 2DEC +0.1 2DEC ANGLES 45° HEXEEN	projection A4	MM
Dr W.Panis	30-04-96	Product family MILLIPICS	size A4	Scale 3/1
Eng		Spec ref	ECN	
Chr		Material		
Appr				
Dr W.Panis	MPACS 8+2R RA RCP CONN TYPE F/WITH SHIELDED		202260,003	Rev. D
Chr	catalog no	HM2R89PA8101----	CUSTOMER	sheet 1 of 1