

## Excellent Integrated System Limited

Stocking Distributor

Click to view price, real time Inventory, Delivery & Lifecycle Information:

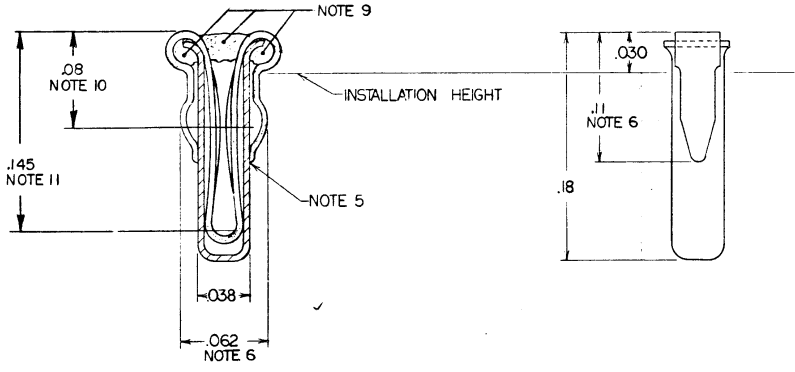
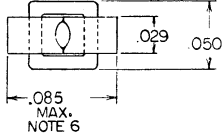
[FCI](#)  
[75315-001](#)

For any questions, you can email us directly:

[sales@integrated-circuit.com](mailto:sales@integrated-circuit.com)

PRODUCT NO.	NOTE
75315-001	As Shown

REVISIONS		
REV	DESCRIPTION	BY DATE
F	REDRAWN	DEW 7-27-77
G	ADDED NOTE 10	DCH 11-27-77
H	ADD P/N -002	SL 4-28-78
J	DELETED-002, ADDED DIM'S .08 + .145, REVISED NOTES 1,3,4,6,8, + 10. ADDED NOTE 11, DELETED DIMPLE ON Dwg	1-25-80
K	SPRING WIDTH .085 WAS .080	BW 9/1/84



**NOTES:**

1. THE SOCKET ASSY SHALL BE SELF RETAINING DURING WAVE SOLDERING IN HOLES FROM .050 TO .058 DIA.
2. THE SPRING SHALL SOLDER TO THE CUP DURING WAVE SOLDERING IN SINGLE OR DOUBLE SIDED BOARDS TO 1/16 THK. NO SOLDER SHALL ENTER THE INSIDE OF THE CUP.
3. THE SOCKET SHALL ACCEPT ROUND LEADS FROM .012 TO .022 DIA. AND FLAT LEADS WHEN PROPERLY ORIENTED FROM .008 TO .015 THK. BY .020 TO .025 WIDE.
4. SEE PRODUCT SPEC 12-006 FOR INSERTION / WITHDRAWAL FORCES.
5. GAP BETWEEN SPRING TIPS AND CUP NOT TO EXCEED .003.
- ⑥ DIMENSIONS APPLY PRIOR TO INSTALLATION
7. CUP MATERIAL: GILDING MATERIAL PER MIL.-C-21768. SPRING MATERIAL: B + Cu PER QQ-C-533.
8. CUP PLATING: TIN-LEAD 60/40 1,50μ / 60μ THK. SPRING PLATING: 0,76μ / 30μ GOLD (MIL G45204B) TYPE IC, OVER 1,01μ / 40μ NICKEL (QQ-N-290)
- ⑨ R.T.V. APPLIED TO AREA SHOWN TO PREVENT FLUX AND SOLDER FROM ENTERING SOCKET DURING WAVE SOLDERING.
- ⑩ SHOWS CENTER LINE OF THEORETICAL POINT OF CONTACT FROM TOP OF SPRING
- ⑪ SHOWS MAX. DEPTH FOR .020 LEAD FROM TOP OF SPRING

<b>CUSTOMER COPY FOR REFERENCE ONLY</b>				<b>BERG ELECTRONICS</b> E. I. DU PONT DE NEMOURS & COMPANY NEW CLIMBERLANG, PA.	
DO NOT SCALE DRAWING	TOLERANCES UNLESS OTHERWISE NOTED	INCH	MM	DATE	DATE
	LINEAR	.001		NOTE 7	2-27-77
		.001		ENGR	
NEXT ASSY	USED ON	THIRD ANGLE PROJECTION	RADI	FINISH	
		INCH	ANGLES	NOTE 8	
APPLICATION		MM		APPRO	
				TITLE	MINISERT SOCKET
				SCALE	SIZE
				DWG NO.	75315
				SHEET	1 of 1