

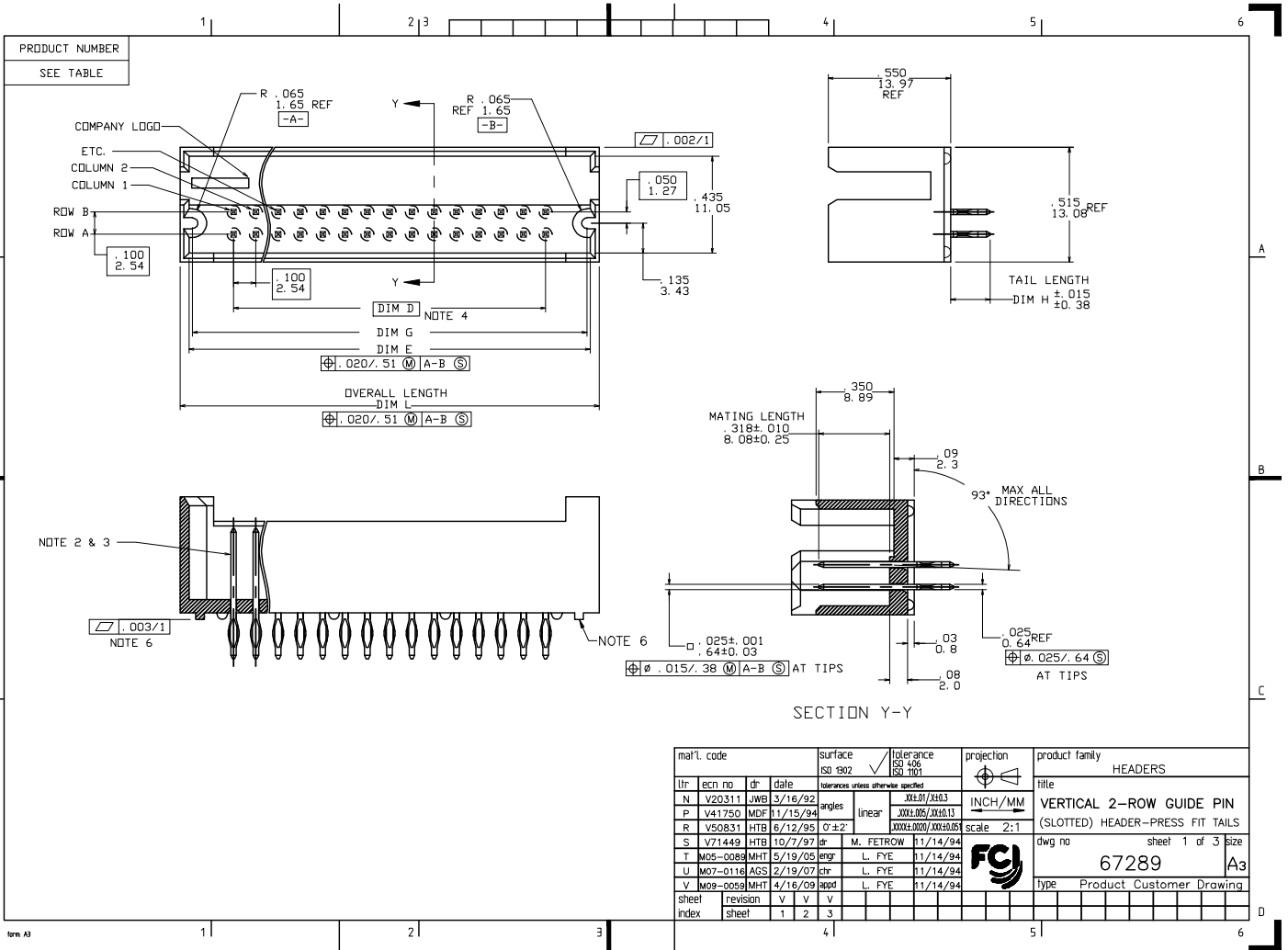
Excellent Integrated System Limited

Stocking Distributor

Click to view price, real time Inventory, Delivery & Lifecycle Information:

[FCI](#)
[67290-006](#)

For any questions, you can email us directly:
sales@integrated-circuit.com



PRODUCT NUMBER	SIZE	TAIL LENGTH	DIM D	DIM G	DIM E	OVERALL LENGTH	PLATING
NOTE 5, 7	NOTE 5	DIM H	NOTE 4	.37/9.4+D DIM	.40/10.2+D DIM	.48/12.2+D DIM	NOTE 11
67289-XXX	2 x XXX	.177/4.50					30u"/.76u MIN Au OVER 50u"/1.27u Ni
67290-XXX		.177/4.50					15u"/.38u MIN Au OVER 50u"/1.27u Ni
67291-XXX		.177/4.50					GOLD FLASH OVER 50u"/1.27u Ni
67292-XXX		.177/4.50					120u"/3.05u 93/7 Sn/Pb OVER 50u"/1.27u Ni
67958-XXX		.310/7.90					30u"/.76u MIN Au OVER 50u"/1.27u Ni
67961-XXX		.310/7.90					15u"/.38u MIN Au OVER 50u"/1.27u Ni
68251-XXX		.680/17.30					30u"/.76u MIN Au OVER 50u"/1.27u Ni
68509-XXX		.480/12.20					30u"/.76u MIN Au OVER 50u"/1.27u Ni
68521-XXX		.480/12.20					30u"/.76u MIN GXT™ OVER 50u"/1.27u Ni
68830-XXX		.680/17.30					15u"/.38u MIN Au OVER 50u"/1.27u Ni
68831-XXX		.480/12.20					15u"/.38u MIN Au OVER 50u"/1.27u Ni
68832-XXX		.310/7.90					15u"/.38u MIN GXT™ OVER 50u"/1.27u Ni
68833-XXX		.310/7.90					30u"/.76u MIN GXT™ OVER 50u"/1.27u Ni
68834-XXX		.177/4.50					15u"/.38u MIN GXT™ OVER 50u"/1.27u Ni
68835-XXX		.177/4.50					30u"/.76u MIN GXT™ OVER 50u"/1.27u Ni
68836-XXX		.680/17.30					30u"/.76u MIN GXT™ OVER 50u"/1.27u Ni
68837-XXX		.680/17.30					15u"/.38u MIN GXT™ OVER 50u"/1.27u Ni
68838-XXX		.480/12.20					15u"/.38u MIN GXT™ OVER 50u"/1.27u Ni
69275-XXX		.310/7.90					GOLD FLASH OVER 50u"/1.27u Ni
69276-XXX		.310/7.90					120u"/3.05u 93/7 Sn/Pb OVER 50u"/1.27u Ni
69277-XXX		.480/12.20					GOLD FLASH OVER 50u"/1.27u Ni
69278-XXX		.480/12.20					120u"/3.05u 93/7 Sn/Pb OVER 50u"/1.27u Ni
69279-XXX		.680/17.30					GOLD FLASH OVER 50u"/1.27u Ni
69280-XXX		.680/17.30					120u"/3.05u 93/7 Sn/Pb OVER 50u"/1.27u Ni
69283-XXX		.177/4.50					DUPLEX 15u"/.38u Au & 100u"/1.27u 60/40 SnPb OVER 50u"/1.27u Ni
69284-XXX		.177/4.50					DUPLEX 30u"/.76u Au & 100u"/1.27u 60/40 SnPb OVER 50u"/1.27u Ni
69285-XXX		.310/7.90					DUPLEX 15u"/.38u Au & 100u"/1.27u 60/40 SnPb OVER 50u"/1.27u Ni
69286-XXX		.310/7.90					DUPLEX 30u"/.76u Au & 100u"/1.27u 60/40 SnPb OVER 50u"/1.27u Ni
69287-XXX		.480/12.20					DUPLEX 15u"/.38u Au & 100u"/1.27u 60/40 SnPb OVER 50u"/1.27u Ni
69288-XXX		.480/12.20					DUPLEX 30u"/.76u Au & 100u"/1.27u 60/40 SnPb OVER 50u"/1.27u Ni
69289-XXX		.680/17.30					DUPLEX 15u"/.38u Au & 100u"/1.27u 60/40 SnPb OVER 50u"/1.27u Ni
69290-XXX	2 x XXX	.680/17.30	NOTE 4	.37/9.4+D DIM	.40/10.2+D DIM	.48/12.2+D DIM	DUPLEX 30u"/.76u Au & 100u"/1.27u 60/40 SnPb OVER 50u"/1.27u Ni

NOTES:

- ① MOLDING MATERIAL: HI-TEMP RESIN PER UL 94V-0
COLOR: NATURAL
- ② TERMINAL MATERIAL: 3/4 HARD PHOS BRONZE
UNS C5100.
- 3. PIN RETENTION TO BE 3 LBS/1.36 KG
MIN PER PIN IN EITHER DIRECTION.
- ④ DIM D =(NO. OF COLUMNS-1)TIMES .100/2.54
- ⑤ -XXX REPRESENTS NO. OF COLUMNS
(i.e. 2X5 PART IS -005)
-001 THRU -004 ARE NOT AVAILABLE
-005 THRU -050 ARE AVAILABLE
- ⑥ FLATNESS IS MEASURED FROM THE BOTTOM
OF THE END STANDOFFS.
- ⑦ ADD "LF" SUFFIX AT THE END OF PART NUMBER FOR LEAD FREE OPTION.
- ⑧ IF "LF" P/N THE PRODUCT MEETS EUROPEAN UNION
DIRECTIVES AND OTHER COUNTRY REGULATION AS
DESCRIBED IN GS-22-008.
- ⑩ THE PRODUCT IS NOT INTENDED TO BE EXPOSED
TO A MANUFACTURING SOLDER PROCESS.
- ⑪ PLATING OPTIONS:
MAY BE EITHER GOLD OR GXT PLATED AT MANUFACTURER'S OPTION.

mat'l. code		surface	tolerance	projection	product family
ISO 1902		ISO 1902	ISO 1001		HEADERS
tr	ecm no	dr	date	angles	linear
v				0°±2'	
		tolerances unless otherwise specified		INCH/MM	
		XXX.XX/XXX.XX		scale 2:1	
		M. FETROW 11/14/94		FCI	
		engr L. FYE 11/14/94		sheet 2 of 3 size	
		chr L. FYE 11/14/94		A3	
		appd L. FYE 11/14/94		Type Product Customer Drawing	
sheet	revision				
index	sheet				

PRODUCT NUMBER NOTE 5, 7	SIZE NOTE 5	TAIL LENGTH DIM H	DIM D	DIM G	DIM E	OVERALL LENGTH DIM L	PLATING NOTE 11
67289-XXXLF	2 x XXX	.177/4.50	NOTE 4	.37/9.4+D DIM	40/10.2+D DIM	.48/12.2+D DIM	30u"/.76u MN Au OVER 50u"/1.27u Ni
67290-XXXLF		.177/4.50					15u"/.38u MN Au OVER 50u"/1.27u Ni
67291-XXXLF		.177/4.50					GOLD FLASH OVER 50u"/1.27u Ni
67292-XXXLF		.177/4.50					100u"/2.54u Sn OVER 50u"/1.27u Ni
67958-XXXLF		.310/7.90					30u"/.76u MN Au OVER 50u"/1.27u Ni
67961-XXXLF		.310/7.90					15u"/.38u MN Au OVER 50u"/1.27u Ni
68251-XXXLF		.680/17.30					30u"/.76u MN Au OVER 50u"/1.27u Ni
68509-XXXLF		.480/12.20					30u"/.76u MN Au OVER 50u"/1.27u Ni
68521-XXXLF		.480/12.20					30u"/.76u MN GXT™ OVER 50u"/1.27u Ni
68830-XXXLF		.680/17.30					15u"/.38u MN Au OVER 50u"/1.27u Ni
68831-XXXLF		.480/12.20					15u"/.38u MN Au OVER 50u"/1.27u Ni
68832-XXXLF		.310/7.90					15u"/.38u MN GXT™ OVER 50u"/1.27u Ni
68833-XXXLF		.310/7.90					30u"/.76u MN GXT™ OVER 50u"/1.27u Ni
68834-XXXLF		.177/4.50					15u"/.38u MN GXT™ OVER 50u"/1.27u Ni
68835-XXXLF		.177/4.50					30u"/.76u MN GXT™ OVER 50u"/1.27u Ni
68836-XXXLF		.680/17.30					30u"/.76u MN GXT™ OVER 50u"/1.27u Ni
68837-XXXLF		.680/17.30					15u"/.38u MN GXT™ OVER 50u"/1.27u Ni
68838-XXXLF		.480/12.20					15u"/.38u MN GXT™ OVER 50u"/1.27u Ni
69275-XXXLF		.310/7.90					GOLD FLASH OVER 50u"/1.27u Ni
69276-XXXLF		.310/7.90					100u"/2.54u Sn OVER 50u"/1.27u Ni
69277-XXXLF		.480/12.20					GOLD FLASH OVER 50u"/1.27u Ni
69278-XXXLF		.480/12.20					100u"/2.54u Sn OVER 50u"/1.27u Ni
69279-XXXLF		.680/17.30					GOLD FLASH OVER 50u"/1.27u Ni
69280-XXXLF		.680/17.30					100u"/2.54u Sn OVER 50u"/1.27u Ni
69283-XXXLF		.177/4.50					DUPLEX 15u"/.38u Au & 100u"/2.54u Sn OVER 50u"/1.27u Ni
69284-XXXLF		.177/4.50					DUPLEX 30u"/.76u Au & 100u"/2.54u Sn OVER 50u"/1.27u Ni
69285-XXXLF		.310/7.90					DUPLEX 15u"/.38u Au & 100u"/2.54u Sn OVER 50u"/1.27u Ni
69286-XXXLF		.310/7.90					DUPLEX 30u"/.76u Au & 100u"/2.54u Sn OVER 50u"/1.27u Ni
69287-XXXLF		.480/12.20					DUPLEX 15u"/.38u Au & 100u"/2.54u Sn OVER 50u"/1.27u Ni
69288-XXXLF		.480/12.20					DUPLEX 30u"/.76u Au & 100u"/2.54u Sn OVER 50u"/1.27u Ni
69289-XXXLF		.680/17.30					DUPLEX 15u"/.38u Au & 100u"/2.54u Sn OVER 50u"/1.27u Ni
69290-XXXLF	2 x XXX	.680/17.30	NOTE 4	.37/9.4+D DIM	40/10.2+D DIM	.48/12.2+D DIM	DUPLEX 30u"/.76u Au & 100u"/2.54u Sn OVER 50u"/1.27u Ni

mat'l code		surface ISO 902	tolerance ISO 406 ISO 100	projection 	product family HEADERS
tr	ecm no	dr	date	INCH/MM	title VERTICAL 2-ROW GUIDE PIN
v				scale 2:1	(SLOTTED) HEADER-PRESS FIT TAILS
					dwg no 67289
					sheet 3 of 3 size A3
					type Product Customer Drawing
sheet	revision				
index	sheet				