



Distributor of FCI: Excellent Integrated System Limited

Datasheet of DAV3W3S743G30LF - D-Sub Connector Receptacle, Female Sockets 3 (Power)
Position Through Hole, Right Angle Solder

Contact us: sales@integrated-circuit.com Website: www.integrated-circuit.com

Excellent Integrated System Limited

Stocking Distributor

Click to view price, real time Inventory, Delivery & Lifecycle Information:

[FCI](#)

[DAV3W3S743G30LF](#)

For any questions, you can email us directly:

sales@integrated-circuit.com

Contact us: sales@integrated-circuit.com Website: www.integrated-circuit.com

DBL5W5S700G30LF

Series

Shell size: **E A B C**
see sheet 3

Front accessory definition
see sheet 2

- blank** :without accessory
- L** :threaded insert M3
- O** :threaded insert UNC 4-40
- V** :female screw UNC 4-40

Layout of contacts (see sheets)

Contacts

S :Socket

Termination type
7 Right angle/USA

Plating

- 00** 200 matings/unmatings
- 43** 500 matings/unmatings

PCB accessories definition
see sheet 2

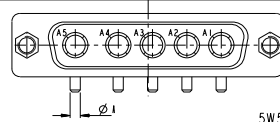
- A** :without accessory
- H** :Metal brackets+harpoons for PCB 2.40mm
- G** :Metal brackets+harpoons for PCB 1.60mm
- M** :Metal brackets

Power contacts

- 00** :Not fitted with power contact (signal contacts always fitted)
- 30** :Fitted with power contacts 30 Amp.

TABLE 1:PCB HOLE DIAMETERS

POWER CONTACTS		ACCESSORIES	
30 A	∅2.00	∅2.40	∅3.10
Max current power	∅A ^{+0.1} ₀	PCB HOLE +/-0.1	PCB HOLE +/-0.1



5W5 FOR EXAMPLE

www.fciconnect.com		surface	tolerance std	projection	mm
		ISO 1922	ISO 406 ISO 1101	AS2	Scale 2:1
		TOLERANCES UNLESS OTHERWISE SPECIFIED			
Dr	M PESSON	2005-10-11	ANGULAR	0.1	∅0.3
Eng	P LEGARE	2005-10-11	LINEAR	0.xx	∅0.1
Chr			∅ 1.2	0.xxx	∅0.05
		Product family		Spec ref	
		SUB FEMALE DW US foot print		C01-8639-2309	
		full power right angled solder		CUSTOMER label 1 of 3	

REFERENCE SPECIFICATIONS

-NFC 93425 (in compliance with HE 507)

PHYSICAL CHARACTERISTICS

- INSULATOR MATERIAL: THERMOPLASTIC ,UL94V0
- CONTACT MATERIAL: BRASS
- ACCESSORIES: BRASS
- SHELLS: STEEL

ELECTRICAL CHARACTERISTICS

- NOMINAL CURRENT: 30A
- CONTACT RESISTANCE: <= 7.3 m ohms
- CONTACT/CONTACT : >=1000 V
- CONTACT/GROUND : >=1200 V
- INSULATION RESISTANCE: >=5000 MOhms

ENVIRONMENTAL CHARACTERISTICS

- CLIMATIC CATEGORY: 55/125/21
- TEMPERATURE RANGE -55°C TO +125°C
- DAMP HEAT STEADY STATE 21 DAYS
- SALT SPRAY 24 HOURS

MECHANICAL CHARACTERISTICS

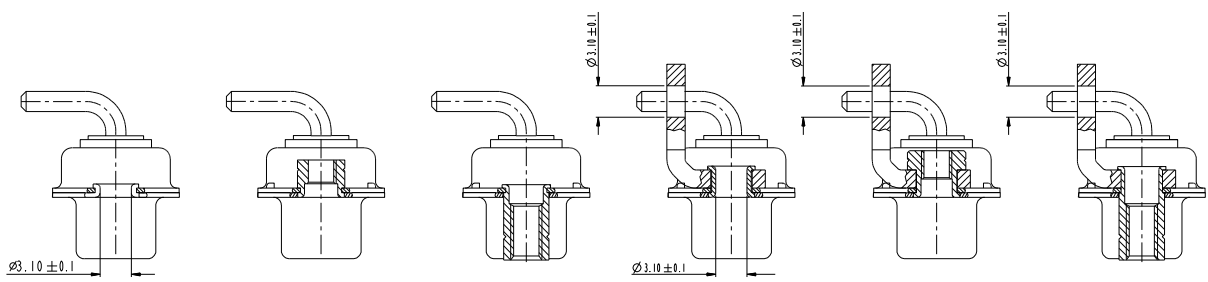
- RETENTION AGAINST TORQUE: - Threaded insert: 0.7 N.m minimum
- Female screw : 0.5 N.m minimum

NOTE RoHS INFORMATION

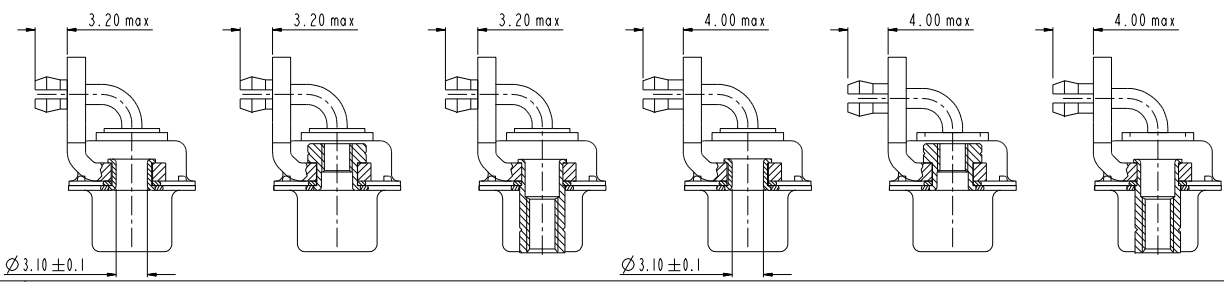
- The "LF" products meet european union Directives and other country regulations as described in GS-22-008.
- The housing will withstand exposure to 260°C peak temperature for 3.5 seconds in a wave solder application with a 1.6mm minimum thick circuit board. See application notes/procedures if they are available.
- Termination plating spec:
 - Ni 1.27µm+Sn 2.5 to 7.5µm pure bright
 - Active area plating spec:
 - Ni + Gold
 - Shell plating :2 to 4µm Cu + Ni + 3 to 10µm Sn(pure bright)
 - Accessories: Sn pure bright + Nickel
- Packaging spec: See GS-14-920

Copyright FCI

Contact us: sales@integrated-circuit.com Website: www.integrated-circuit.com



FRONT ACCESSORY	Blank Without	L insert M3 O insert UNC 4.40	V insert UNC 4.40	Blank Without	L insert M3 O insert UNC 4.40	V insert UNC 4.40
PCB ACCESSORIES	A Without	A Without	A Without	M Metal brackets	M Metal brackets	M Metal bracket



FRONT ACCESSORY	Blank Without	L insert M3 O insert UNC 4.40	V insert UNC 4.40	Blank Without	L insert M3 O insert UNC 4.40	V insert UNC 4.40
PCB ACCESSORIES	G Metal brackets + harpoons for PCB 1.60mm	G Metal brackets + harpoons for PCB 1.60mm	G Metal brackets + harpoons for PCB 1.60mm	H Metal brackets + harpoons for PCB 2.40mm	H Metal brackets + harpoons for PCB 2.40mm	H Metal brackets + harpoons for PCB 2.40mm

Copyright FCI

SCALE: 4

www.fciconnect.com		surface	tolerance std	projection	mm
Dr	M PESSON	2005-10-11	ISO 1101	ISO 1101	mm
Eng	P LEGARE	2005-10-11	ANGULAR	0.1	±0.3
Chr			LINEAR	0.1x	±0.1
Appr			Product family	0.1x	±0.05
				ECN	F09-0092
				Spec ref	

FCI	SUB FEMALE DW US foot print	01	C01-8639-2309	Rev.
	full power right angled solder	02		E
		03		

PDM REVIEW STATUS: Released Printed: Apr 28, 2015

Contact us: sales@integrated-circuit.com Website: www.integrated-circuit.com

PART NUMBER	AMPS	MATINGS/ UNMATINGS	FRONT ACCESSORY	PCB ACCESSORIES
D+WxS700A30LF	30	200	without	without
D+LxWxS700A30LF	30	200	insert M3	without
D+OxWxS700A30LF	30	200	insert UNC 4.40	without
D+VxWxS700A30LF	30	200	female screw UNC 4.40	without
D+WxS700H30LF	30	200	without	metal bracket+harpoon PCB 2.40mm
D+LxWxS700H30LF	30	200	insert M3	metal bracket+harpoon PCB 2.40mm
D+OxWxS700H30LF	30	200	insert UNC 4.40	metal bracket+harpoon PCB 2.40mm
D+VxWxS700H30LF	30	200	female screw UNC 4.40	metal bracket+harpoon PCB 2.40mm
D+WxS700G30LF	30	200	without	metal bracket+harpoon PCB 1.60mm
D+LxWxS700G30LF	30	200	insert M3	metal bracket+harpoon PCB 1.60mm
D+OxWxS700G30LF	30	200	insert UNC 4.40	metal bracket+harpoon PCB 1.60mm
D+VxWxS700G30LF	30	200	female screw UNC 4.40	metal bracket+harpoon PCB 1.60mm
D+WxS700M30LF	30	200	without	metal bracket
D+LxWxS700M30LF	30	200	insert M3	metal bracket
D+OxWxS700M30LF	30	200	insert UNC 4.40	metal bracket
D+VxWxS700M30LF	30	200	female screw UNC 4.40	metal bracket

shell size
I

LAYOUTS
xWx

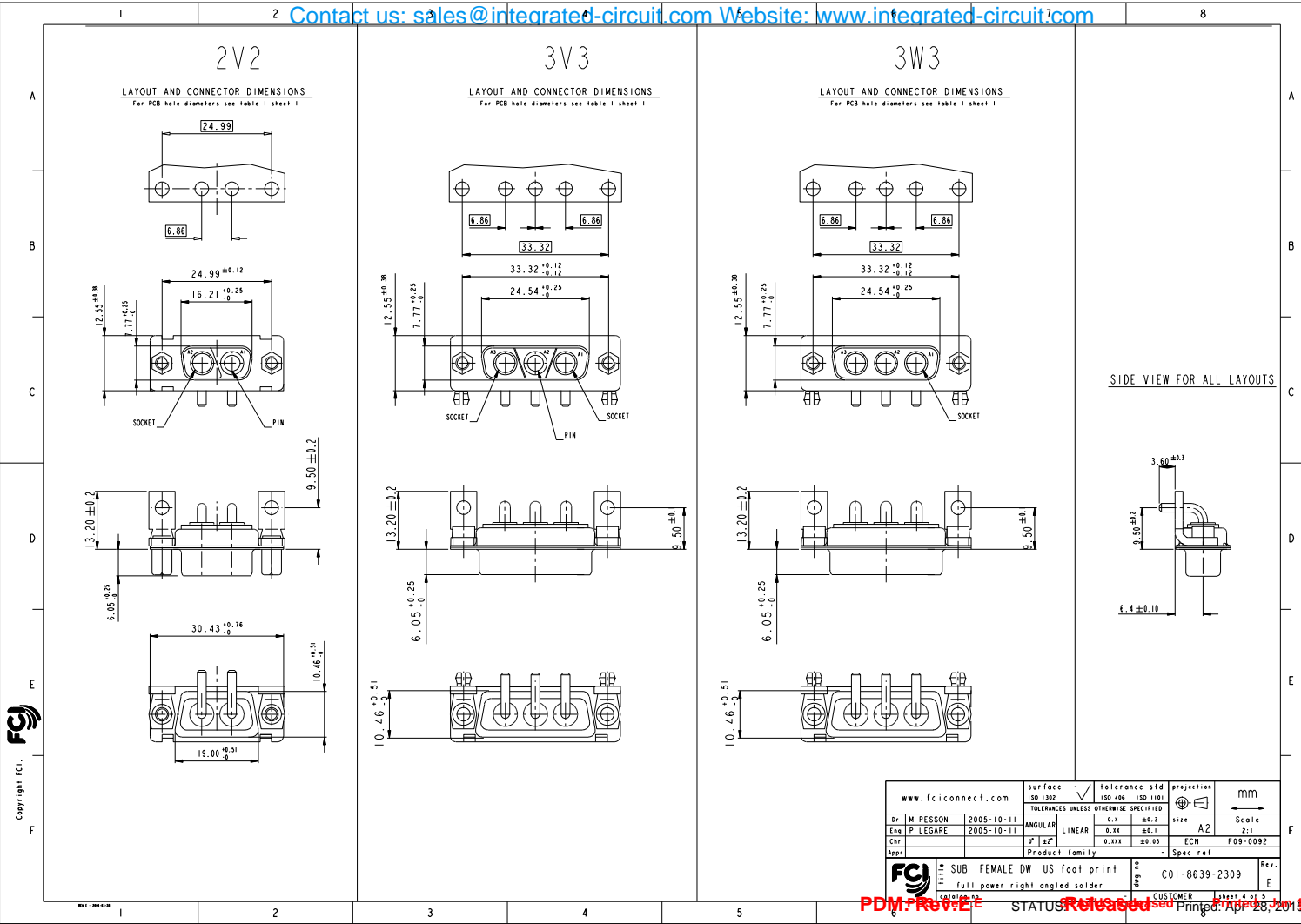
E 2V2
A 3V3
A 3W3
B 5W5
C 8W8

PART NUMBER	AMPS	MATINGS/ UNMATINGS	FRONT ACCESSORY	PCB ACCESSORIES
D+WxS743A30LF	30	500	without	without
D+LxWxS743A30LF	30	500	insert M3	without
D+OxWxS743A30LF	30	500	insert UNC 4.40	without
D+VxWxS743A30LF	30	500	female screw UNC 4.40	without
D+WxS743H30LF	30	500	without	metal bracket+harpoon PCB 2.40mm
D+LxWxS743H30LF	30	500	insert M3	metal bracket+harpoon PCB 2.40mm
D+OxWxS743H30LF	30	500	insert UNC 4.40	metal bracket+harpoon PCB 2.40mm
D+VxWxS743H30LF	30	500	female screw UNC 4.40	metal bracket+harpoon PCB 2.40mm
D+WxS743G30LF	30	500	without	metal bracket+harpoon PCB 1.60mm
D+LxWxS743G30LF	30	500	insert M3	metal bracket+harpoon PCB 1.60mm
D+OxWxS743G30LF	30	500	insert UNC 4.40	metal bracket+harpoon PCB 1.60mm
D+VxWxS743G30LF	30	500	female screw UNC 4.40	metal bracket+harpoon PCB 1.60mm
D+WxS743M30LF	30	500	without	metal bracket
D+LxWxS743M30LF	30	500	insert M3	metal bracket
D+OxWxS743M30LF	30	500	insert UNC 4.40	metal bracket
D+VxWxS743M30LF	30	500	female screw UNC 4.40	metal bracket

Copyright FCI

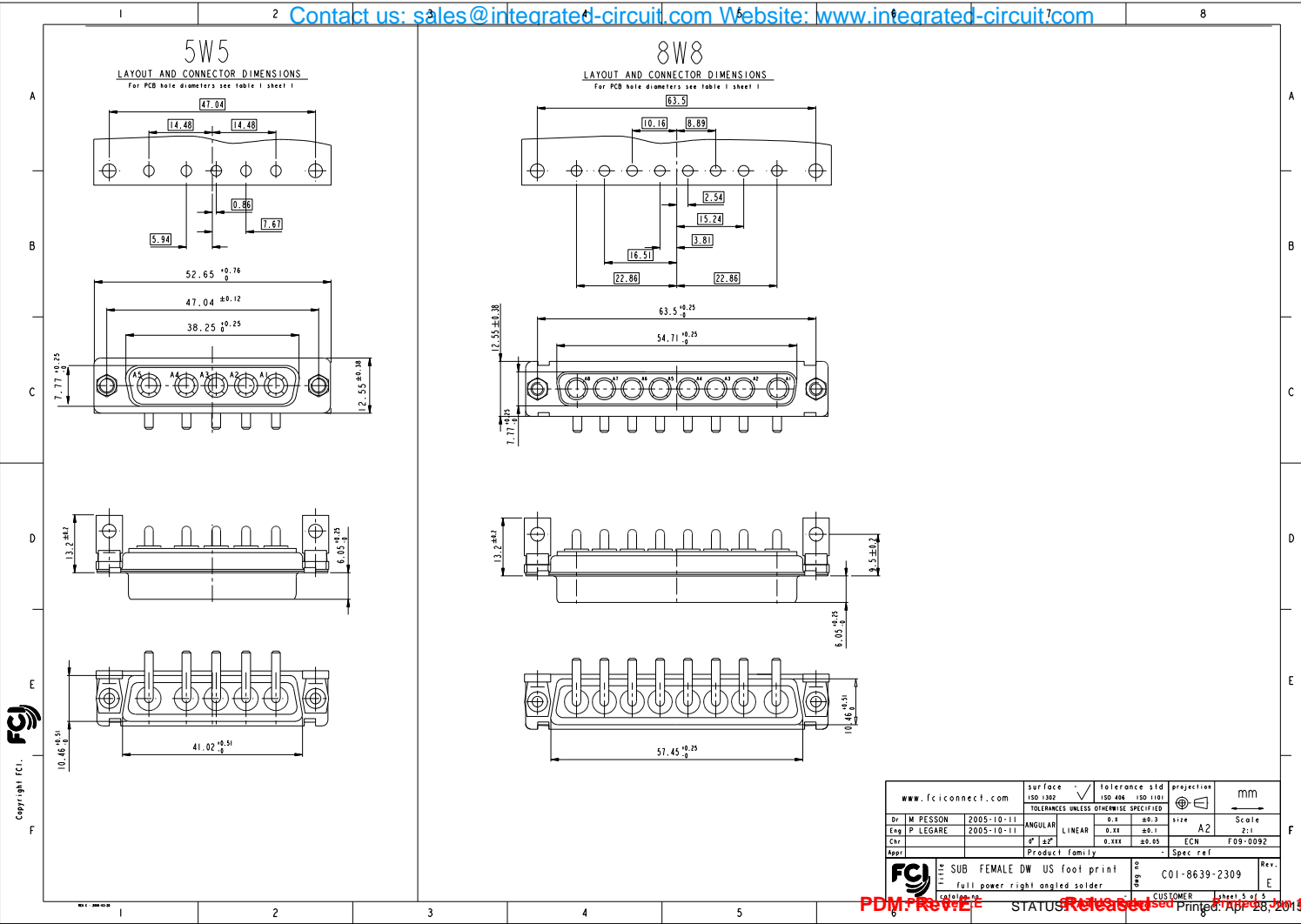
www.fciconnect.com		surface	tolerance std	projection	mm
Dr M PESSON	2005-10-11	ISO 9002	ISO 600 ISO 1101	ASME Y14.5	
Eng P LEGARE	2005-10-11	ANGULAR	0.1	0.3	Scale 2:1
Chr		LINEAR	0.1x	0.1	A2
Appr		Product family	0.1x	0.05	ECN F09-0092
FCI		SUB FEMALE DW US foot print		Spec ref	Rev.
		full power right angled solder		C01-8639-2309	E

PDM REVIEW STATUS: Released Printed: Apr 28, 2015



www.fciconnect.com		surface	tolerance std	projection	mm
		ISO 922	ISO 406 ISO 1101	ASME Y14.5	
TOLERANCES UNLESS OTHERWISE SPECIFIED					
Dr	M PESSON	2005-10-11	ANGULAR	0.1	±0.3
Eng	P LEGARE	2005-10-11	LINEAR	0.1x	±0.1
Chr			Ø	0.1x	±0.05
Appr			Product family		Spec ref
FCI		SUB FEMALE DW US foot print		any no	C01-8639-2309
		full power right angled solder		any no	CUSTOMER
		Label 4 of 5		Rev.	

Contact us: sales@integrated-circuit.com Website: www.integrated-circuit.com



PDM REVIEW STATUS: Released Printed: Apr 28, 2015