

Excellent Integrated System Limited

Stocking Distributor

Click to view price, real time Inventory, Delivery & Lifecycle Information:

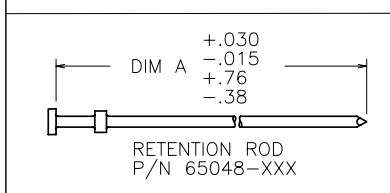
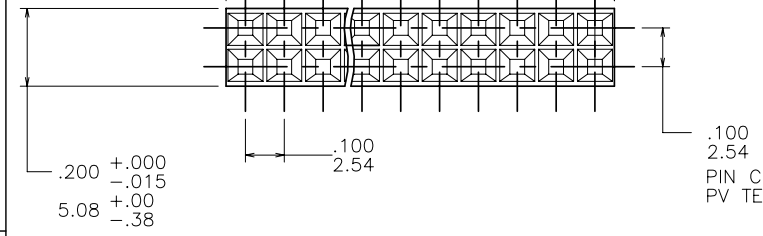
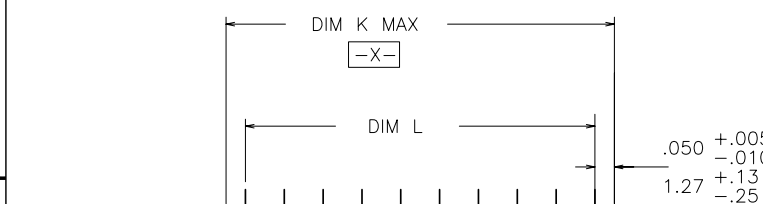
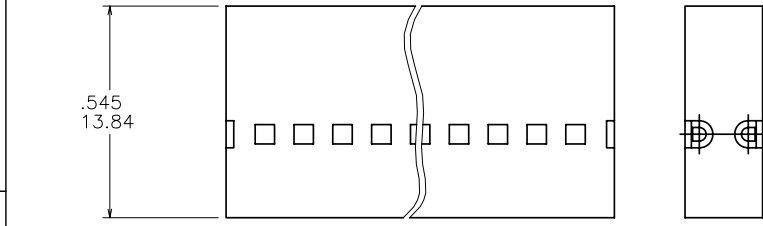
[FCI](#)

[92652-003LF](#)

For any questions, you can email us directly:

sales@integrated-circuit.com

PRODUCT NUMBER
SEE TABLE



- NOTES:
- ① MOLDING MATERIAL: MODIFIED POLYPHENYLENE ETHER, FLAME RETARDANT PER UL-94V-0, COLOR: BLACK.
 - ② PIN LENGTH TO BE .210/5.33 MIN
RECOMMENDED PIN LENGTH IS .225±.015/5.72±.38.
 - ③ QUANTITY OF RETENTION RODS IS TWO(2) PER HOUSING.
 - ④ RETENTION ROD MATERIAL: NYLON, .030/.76 DIAMETER.
 - ⑤ PRODUCT SPECIFICATION: BUS-12-067.
 - ⑥ PRODUCT MEETS EUROPEAN UNION DIRECTIVES AND OTHER COUNTRY REGULATIONS AS DESCRIBED IN GS-22-008.
 - ⑦ THIS PRODUCT IS NOT INTENDED TO BE EXPOSED TO MANUFACTURING SOLDER PROCESSES.

mar'l code SEE NOTE 1 & 4				surface	tolerance	projection	product family
ltr	ecn no	dr	date	tolerances unless otherwise specified		INCH/MM	PV HOUSINGS
A	V30801	PDP	1993-05-11	angles	XX-01/XX-3		
B	V60473	MDF	1996-04-01	linear	XXX+005/XXX+8	title MINI ROD HOUSING DR	
C	V91206	BKB	1999-07-06	0°±2'	XXXX+0020/XXX+051	scale	.100 [2.54] X .100 [2.54]CC
D	V03-1336	PJ	2004-01-22	dr	M. FETROW	1992-07-20	dwg no
E	V05-0718	TAB	2005-07-29	engi	T. HANNA	1992-07-17	sheet 1 of 2
F	V06-0448	HTB	2006-05-23	chr	T. HANNA	1992-07-17	size
G	V07-0565	HTB	2007-08-27	appd	T. HANNA	1992-07-17	A3
sheet	revision	G	G				type
index	sheet	1	2				Product Customer Drawing

PRODUCT NO	NO. OF POSITIONS	DIM K	DIM L	RETENTION ROD P/N	RETENTION ROD LENGTH DIM A	PRODUCT NO	NO. OF POSITIONS	DIM K	DIM L	RETENTION ROD P/N	RETENTION ROD LENGTH DIM A
92652-001LF	UNASSIGNED					92652-026LF	52	2.600/66.04	2.500/63.50	65048-013	3.450/87.63
92652-002LF	4	.200/5.08	.100/2.54	65048-040	1.300/33.02	92652-027LF	54	2.700/68.58	2.600/66.04	65048-013	3.450/87.63
92652-003LF	6	.300/7.62	.200/5.08	65048-040	1.300/33.02	92652-028LF	56	2.800/71.12	2.700/68.58	65048-013	3.450/87.63
92652-004LF	8	.400/10.16	.300/7.62	65048-040	1.300/33.02	92652-029LF	58	2.900/73.66	2.800/71.12	65048-013	3.450/87.63
92652-005LF	10	.500/12.70	.400/10.16	65048-040	1.300/33.02	92652-030LF	60	3.000/76.20	2.900/73.66	65048-005	4.650/118.11
92652-006LF	12	.600/15.24	.500/12.70	65048-040	1.300/33.02	92652-031LF	62	3.100/78.74	3.000/76.20	65048-005	4.650/118.11
92652-007LF	14	.700/17.78	.600/15.24	65048-040	1.300/33.02	92652-032LF	64	3.200/81.28	3.100/78.74	65048-005	4.650/118.11
92652-008LF	16	.800/20.32	.700/17.78	65048-040	1.300/33.02	92652-033LF	66	3.300/83.82	3.200/81.28	65048-005	4.650/118.11
92652-009LF	18	.900/22.86	.800/20.32	65048-040	1.300/33.02	92652-034LF	68	3.400/86.36	3.300/83.82	65048-005	4.650/118.11
92652-010LF	20	1.000/25.40	.900/22.86	65048-026	2.300/58.42	92652-035LF	70	3.500/88.90	3.400/86.36	65048-005	4.650/118.11
92652-011LF	22	1.100/27.94	1.000/25.40	65048-026	2.300/58.42	92652-036LF	72	3.600/91.44	3.500/88.90	65048-005	4.650/118.11
92652-012LF	24	1.200/30.48	1.100/27.94	65048-026	2.300/58.42						
92652-013LF	26	1.300/33.02	1.200/30.48	65048-026	2.300/58.42						
92652-014LF	28	1.400/35.58	1.300/33.02	65048-026	2.300/58.42						
92652-015LF	30	1.500/38.10	1.400/35.56	65048-026	2.300/58.42						
92652-016LF	32	1.600/40.64	1.500/38.10	65048-026	2.300/58.42						
92652-017LF	34	1.700/43.18	1.600/40.64	65048-026	2.300/58.42						
92652-018LF	36	1.800/45.72	1.700/43.18	65048-026	2.300/58.42						
92652-019LF	38	1.900/48.26	1.800/45.72	65048-026	2.300/58.42						
92652-020LF	40	2.000/50.80	1.900/48.26	65048-013	3.450/87.63						
92652-021LF	42	2.100/53.34	2.000/50.80	65048-013	3.450/87.63						
92652-022LF	44	2.200/55.88	2.100/53.34	65048-013	3.450/87.63						
92652-023LF	46	2.300/58.42	2.200/55.88	65048-013	3.450/87.63						
92652-024LF	48	2.400/60.96	2.300/58.42	65048-013	3.450/87.63						
92652-025LF	50	2.500/63.50	2.400/60.96	65048-013	3.450/87.63						



Copyright FCI

mat'l code SEE NOTE 1 & 4		surface	tolerance	projection	product family
ltr	ecn no	dr	date	tolerances unless otherwise specified	title
G				angles linear	MINI ROD HOUSING DR
				xxx-01/xx-3	.100 [2.54] X .100 [2.54]CC
				xxx-005/xxx-8	scale 1:1
				xxx-0020/xxx-051	dwg no 92652 sheet 2 of 2 size A3
		dr	M. FETROW 1992-07-20		type Product Customer Drawing
		engr	T. HANNA 1992-07-17		
		chr	T. HANNA 1992-07-17		
		appd	T. HANNA 1992-07-17		
sheet index	revision sheet				