

## Excellent Integrated System Limited

Stocking Distributor

Click to view price, real time Inventory, Delivery & Lifecycle Information:

[FCI](#)

[DBM25P500MN](#)

For any questions, you can email us directly:

[sales@integrated-circuit.com](mailto:sales@integrated-circuit.com)

Contact us: sales@integrated-circuit.com Website: www.integrated-circuit.com

## DBM25P500MN

## REFERENCE SPECIFICATIONS

-NFC 93425 (in compliance with HE 508)

## PHYSICAL CHARACTERISTICS

-INSULATOR MATERIAL: THERMOSET UL94V0

-CONTACT MATERIAL: BRASS

GOLD OVER NICKEL

-ACCESSORIES:

STEEL FOR METAL BRACKETS

Cadmium plated, yellow passivation

THERMOPLASTIC UL94V0 FOR PLASTIC BRACKETS

BRASS FOR OTHERS ACCESSORIES

Cadmium plated, yellow passivation

-SHELLS:

STEEL

Cadmium plated, yellow passivation

## ELECTRICAL CHARACTERISTICS

-NOMINAL CURRENT: 7.5A

-CONTACT RESISTANCE: &lt;7.3 m Ohms

-CONTACT/CONTACT: &gt;=1000 V

-CONTACT/GROUND: &gt;=1200 V

-INSULATION RESISTANCE: &gt;=5000 MOhms

## ENVIRONMENTAL CHARACTERISTICS

-CLIMATIC CATEGORY: 55/155/56

TEMPERATURE RANGE -55°C TO +155°C

DAMP HEAT STEADY STATE 56 DAYS

SALT SPRAY 48 HOURS

## MECHANICAL CHARACTERISTICS

RETENTION AGAINST TORQUE: -Threaded insert:0.7 N.m min

-Female screw:0.5 N.m min

Series

Shell size: E A B C D  
(see sheet 3)Front accessory definition  
(see sheet 2)Blank :without accessory  
L :threaded insert M3  
O :threaded insert UNC 4-40  
V :female screw UNC 4-40

Layout of contacts (see sheet 3)

9,15,25,37,50

Contacts

S :Socket

Termination type

5 Right angle/Europe standard

Plating

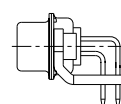
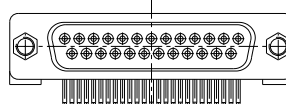
00 Right angle 500 matings/unmatings

43 Right angle 500 matings/unmatings  
for harsh environment

PCB accessories definition(see sheet 2)



Blank :Plastic brackets  
C :Without brackets  
M :Metal brackets

Obligatory for HE508



25 WAY FOR EXAMPLE

rev	ech no	dr	date
A	LS04-0114	MPE	2006/11/14
-	-	-	-
-	-	-	-
-	-	-	-
-	-	-	-
-	-	-	-

www.fciconnect.com			surface <input checked="" type="checkbox"/> tolerance std <input checked="" type="checkbox"/> projection <input checked="" type="checkbox"/>		mm	
			150 1302 150 406 150 101			
			TOLERANCES UNLESS OTHERWISE SPECIFIED			
			ANGULAR		LINEAR	
Dr M PESSON 2006/11/14			0.1 ±0.3		size A2	
Eng P LEGARE 2006/11/14			0.1X ±0.1		ECN	
Chr P LEGARE 2006/11/14			0.2X ±0.5		LS06-0174	
Appr P LEGARE 2006/11/14			Product family		- Spec ref	
			SUB FEMALE DM HE508 series		Rev. A	
			with right angle contact		C01-8637-1748	
			catalog no		CUSTOMER	
					sheet 1 of 3	

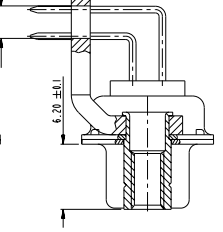
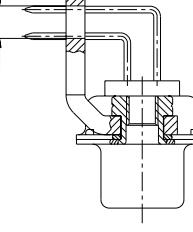
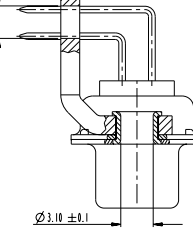
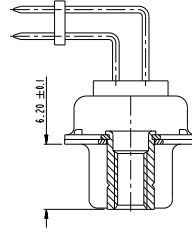
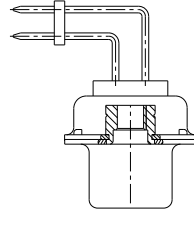
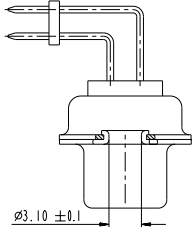
PDS: Rev A

STATUS: Rev A

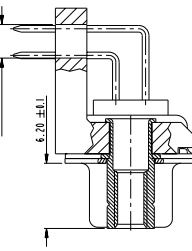
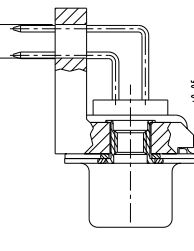
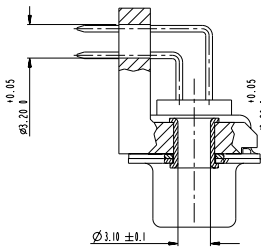
STATUS: Rev A

Revised: Jun 18, 2015

Contact us: [sales@integrated-circuit.com](mailto:sales@integrated-circuit.com) Website: [www.integrated-circuit.com](http://www.integrated-circuit.com)



FRONT ACCESSORY	Blank Without	L insert M3 O insert UNC 4.40	V female screw UNC 4.40	Blank Without	L insert M3 O insert UNC 4.40	V female screw UNC 4.40
PCB ACCESSORIES	C Without	C Without	C Without	M Metal bracket	M Metal bracket	M Metal bracket



FRONT ACCESSORY	Blank Without	L insert M3 O insert UNC 4.40	V female screw UNC 4.40
PCB ACCESSORIES	Blank Plastic bracket	Blank Plastic bracket	Blank Plastic bracket

SCALE: 4

www.fciconnect.com		surface	tolerance std	projection	mm
		150 120	150 100 150 100		
		TOLERANCES UNLESS OTHERWISE SPECIFIED			
Dr	M PESSON	2006/11/14	ANGULAR	LINEAR	0.1 0.3 size A2 Scale 2:1
Eng	P LEGARE	2006/11/14	0.1x 0.1 0.1		
Chr	P LEGARE	2006/11/14	0° 0°		ECN LS06-0174
Appr	P LEGARE	2006/11/14	Product family		Spec ref
		SUB FEMALE DM HE508 series		C01-8637-1748	Rev. A
		with right angle contact		CUSTOMER	sheet 2 of 3
		catalog no			

PDS: Rev-A

STATUS: Rev-A

STATUS: Revised Jun 18, 2015

Contact us: [sales@integrated-circuit.com](mailto:sales@integrated-circuit.com) Website: [www.integrated-circuit.com](http://www.integrated-circuit.com)

PART NUMBER	FRONT ACCESSORY	PCB ACCESSORY
D*MxxS500CN	without	without
D*MLxxS500CN	insert M3	without
D*MOxxS500CN	insert UNC 4.40	without
D*MVxxS500CN	female screw UNC 4.40	without
D*MxxS500MN	without	Metal bracket
D*MLxxS500MN	insert M3	Metal bracket
D*MOxxS500MN	insert UNC 4.40	Metal bracket
D*MVxxS500MN	female screw UNC 4.40	Metal bracket
D*MxxS500N	without	Plastic bracket
D*MLxxS500N	insert M3	Plastic bracket
D*MOxxS500N	insert UNC 4.40	Plastic bracket
D*MVxxS500N	female screw UNC 4.40	Plastic bracket

shell size	Contact number
#	XX
E	09
A	15
B	25
C	37
D	50

PART NUMBER	FRONT ACCESSORY	PCB ACCESSORY
D*MxxS543CN	without	without
D*MLxxS543CN	insert M3	without
D*MOxxS543CN	insert UNC 4.40	without
D*MVxxS543CN	female screw UNC 4.40	without
D*MxxS543MN	without	Metal bracket
D*MLxxS543MN	insert M3	Metal bracket
D*MOxxS543MN	insert UNC 4.40	Metal bracket
D*MVxxS543MN	female screw UNC 4.40	Metal bracket
D*MxxS543N	without	Plastic bracket
D*MLxxS543N	insert M3	Plastic bracket
D*MOxxS543N	insert UNC 4.40	Plastic bracket
D*MVxxS543N	female screw UNC 4.40	Plastic bracket

CROSS REFERENCES HE508 and FCI

HE508 P/N	FCI P/N	FRONT ACCESSORY	PCB ACCESSORY
HE508PxxVS6	D*MxxS500N	without	Plastic bracket
HE508MxxVS6	D*MxxS500MN	without	Metal bracket

www.fciconnect.com		surface	tolerance std	projection	mm
		150 120	150 100 150 110		
		TOLERANCES UNLESS OTHERWISE SPECIFIED			
Dr	M PESSON	2006/11/14	ANGULAR	LINEAR	size
Eng	P LEGARE	2006/11/14	0.1	0.1	A2
Chr	P LEGARE	2006/11/14	0.1X	0.1	ECN
Appr	P LEGARE	2006/11/14	0.1XX	0.05	LS06-0174
		Product family	Spec ref		
		SUB FEMALE DM HE508 series			C01-8637-1748
		with right angle contact			Rev.
		catalog no	CUSTOMER sheet 3 of 9		

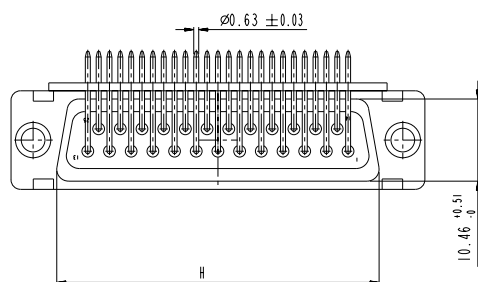
RDS: Rev-A

STATUS: Rev-A

STATUS: Rev-A

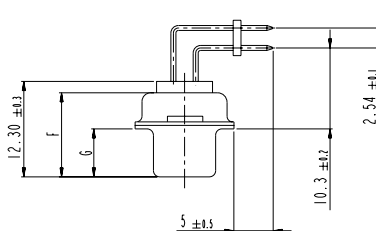
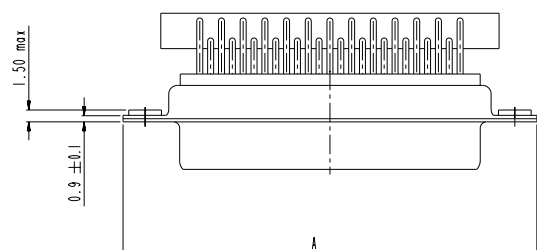
Contact us: [sales@integrated-circuit.com](mailto:sales@integrated-circuit.com) Website: [www.integrated-circuit.com](http://www.integrated-circuit.com)

DIMENSION FOR SHELL E.A.B.C WITHOUT BRACKET

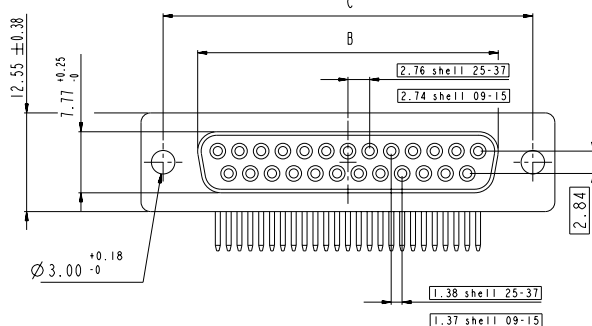
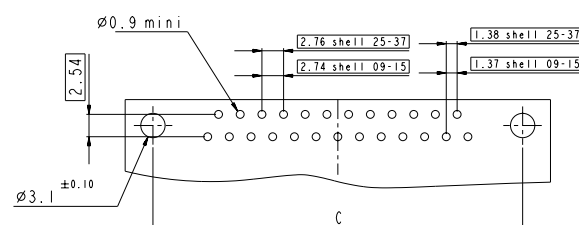


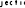

Dimensions are in millimeters

Shell size	Number of contacts	A $+0.76$ $-0$	B $+0.25$ $-0$	C $\pm 0.12$	F $+0.57$ $-0$	G $+0.25$ $-0$	H $+0.5$ $-0$
E	09	30.43	16.21	24.99	10.64	6.05	19.02
A	15	38.76	24.54	33.32	10.64	6.05	27.25
B	25	52.65	38.25	47.04	10.64	6.05	41.02
C	37	68.94	54.71	63.50	10.64	6.05	57.45



## LAYOUT DIMENSIONS



www.fciconnect.com			Surface <input checked="" type="checkbox"/> Tolerance class 150 400	projection 	mm
			TOLERANCES UNLESS OTHERWISE SPECIFIED		
Dr M PESSON	2006/11/14	ANGULAR	0.1	A2	Scale 2:1
Eng P LÉGARÉ	2006/11/14	LINEAR	0.1X		
			0.1XX		
Chr P LÉGARÉ	2006/11/14	0.1 ± 0.2	0.05	ECN	LS06-0174
Appr P LÉGARÉ	2006/11/14	Product family		- Spec ref	
<b>FCI</b>	SUB FEMALE DM HE508 series		series	C01-8637-1748	
	with right angle contact				
			CUSTOMER	Part of a	

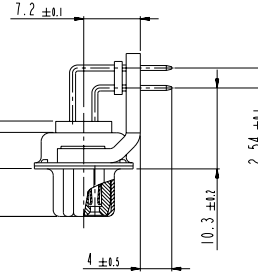
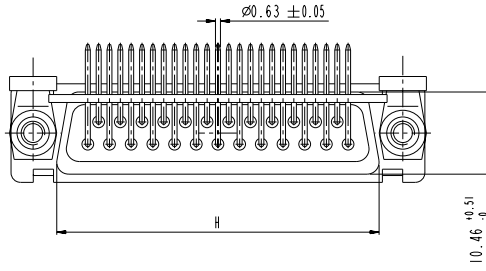
SCALE: 3

Contact us: [sales@integrated-circuit.com](mailto:sales@integrated-circuit.com) Website: [www.integrated-circuit.com](http://www.integrated-circuit.com)

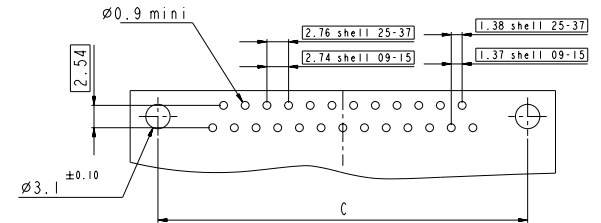
DIMENSION FOR SHELL SIZE E,A,B,C WITH METAL BRACKETS

Dimensions are in millimeters

Shell size	Number of contacts	A $\begin{smallmatrix} +0.76 \\ -0 \end{smallmatrix}$	B $\begin{smallmatrix} +0.25 \\ -0 \end{smallmatrix}$	C $\pm 0.12$	F $\begin{smallmatrix} +0.57 \\ -0 \end{smallmatrix}$	G $\begin{smallmatrix} +0.25 \\ -0 \end{smallmatrix}$	H $\begin{smallmatrix} +0.51 \\ -0 \end{smallmatrix}$
E	09	30.43	16.21	24.99	10.64	6.05	19.02
A	15	38.76	24.54	33.32	10.64	6.05	27.25
B	25	52.65	38.25	47.04	10.64	6.05	41.02
C	37	68.94	54.71	63.50	10.64	6.05	57.45



**LAYOUT DIMENSIONS**



www.fciconnect.com		surface	tolerance std	projection	mm
		150 120	150 105 150 101		
		TOLERANCES UNLESS OTHERWISE SPECIFIED			
Dr	M PESSON	2006/11/14	ANGULAR	0.1	±0.3
Eng	P LEGARE	2006/11/14	LINEAR	0.1X	±0.1
Chr	P LEGARE	2006/11/14	0°	0.1XX	±0.05
Appr	P LEGARE	2006/11/14	Product family	Spec. ref	
		SUB FEMALE DM HE508 series		C01-8637-1748	Rev.
		with right angle contact		CUSTOMER	sheet 5 of 9
		catalog no			

SCALE:3

RDS: Rev-A

STATUS: Rev-A

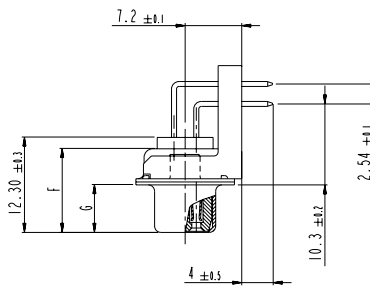
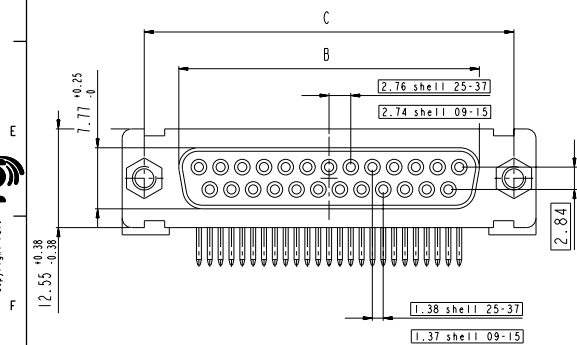
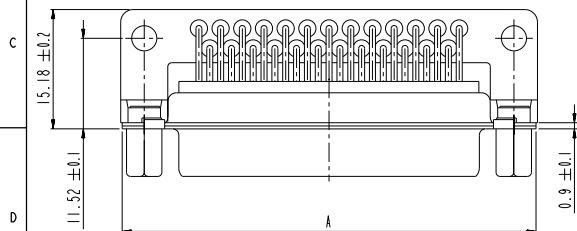
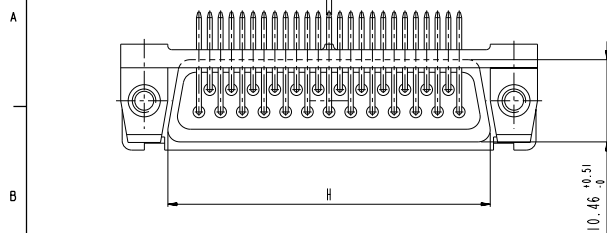
STATUS: Rev-A

Contact us: [sales@integrated-circuit.com](mailto:sales@integrated-circuit.com) Website: [www.integrated-circuit.com](http://www.integrated-circuit.com)

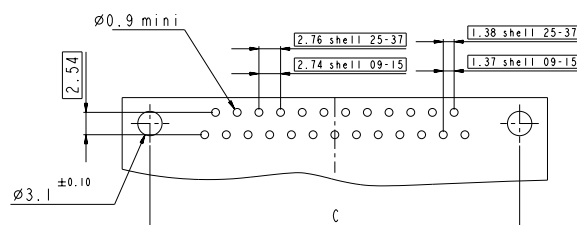
DIMENSION FOR SHELL E, A, B, C WITH PLASTIC BRACKET

Dimensions are in millimeters

Shell size	Number of contacts	A $\begin{smallmatrix} +0.76 \\ -0 \end{smallmatrix}$	B $\begin{smallmatrix} +0.25 \\ -0 \end{smallmatrix}$	C $\pm 0.12$	F $\begin{smallmatrix} +0.57 \\ -0 \end{smallmatrix}$	G $\begin{smallmatrix} +0.25 \\ -0 \end{smallmatrix}$	H $\begin{smallmatrix} +0.51 \\ -0 \end{smallmatrix}$
E	09	30.43	16.21	24.99	10.64	6.05	19.02
A	15	38.76	24.54	33.32	10.64	6.05	27.25
B	25	52.65	38.25	47.04	10.64	6.05	41.02
C	37	68.94	54.71	63.50	10.64	6.05	57.45



#### LAYOUT DIMENSIONS



SCALE:3

www.fciconnect.com		Surface	tolerance std	projection	mm
		150 120	150 100 150 100		
		TOLERANCES UNLESS OTHERWISE SPECIFIED			
Dr	M PESSON	2006/11/14	ANGULAR	0.1	0.3
Eng	P LEGARE	2006/11/14	LINEAR	0.1X	0.1
Chr	P LEGARE	2006/11/14	0°	0.1X	0.05
Appr	P LEGARE	2006/11/14	Product family	Spec ref	
SUB FEMALE DM HE508 series		C01-8637-1748		Rev.	
with right angle contact		CUSTOMER		sheet 6 of 9	
catalog no					

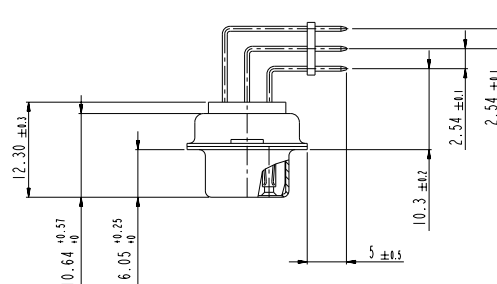
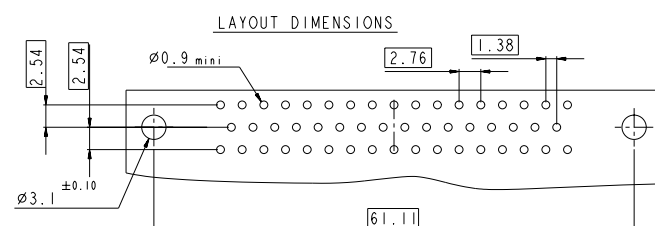
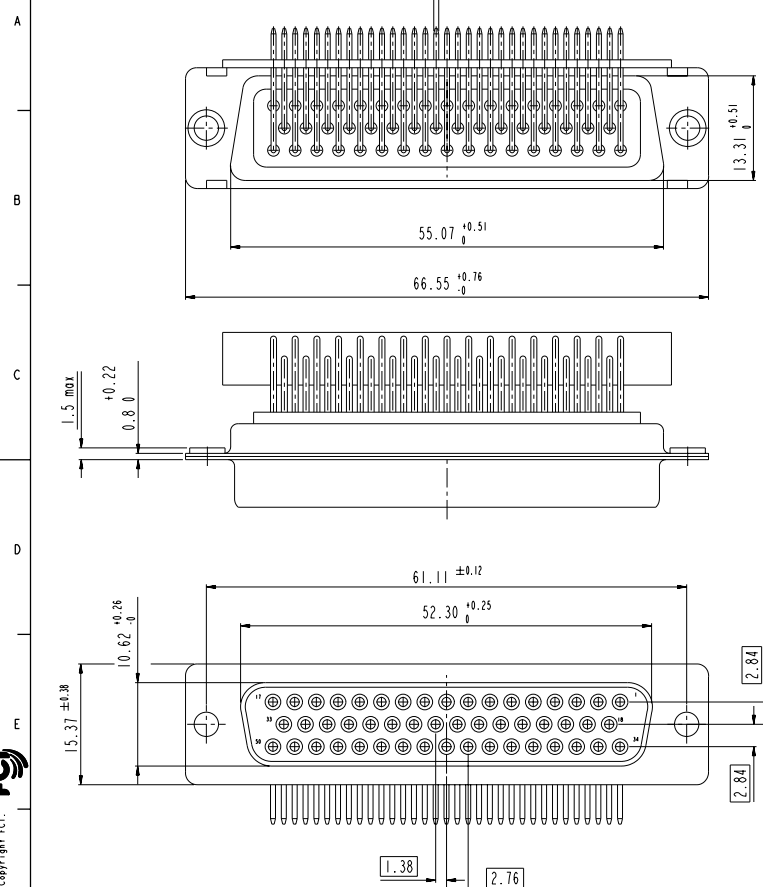
RDS: Rev A

STATUS: Rev A



STATUS: Rev A

Revised: Jun 18, 2015

Contact us: [sales@integrated-circuit.com](mailto:sales@integrated-circuit.com) Website: [www.integrated-circuit.com](http://www.integrated-circuit.com)

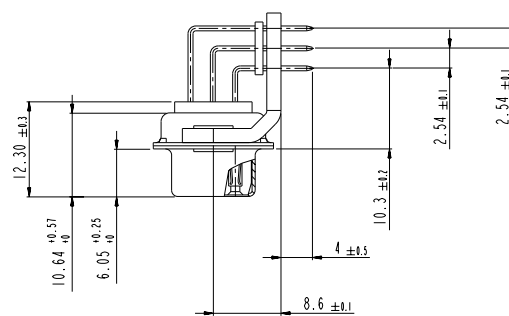
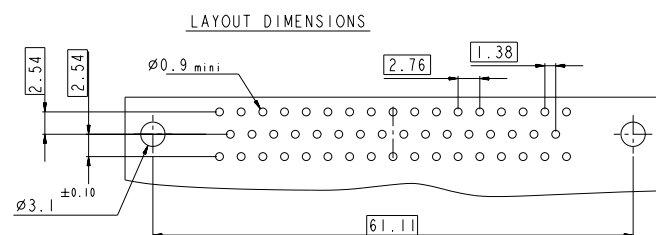
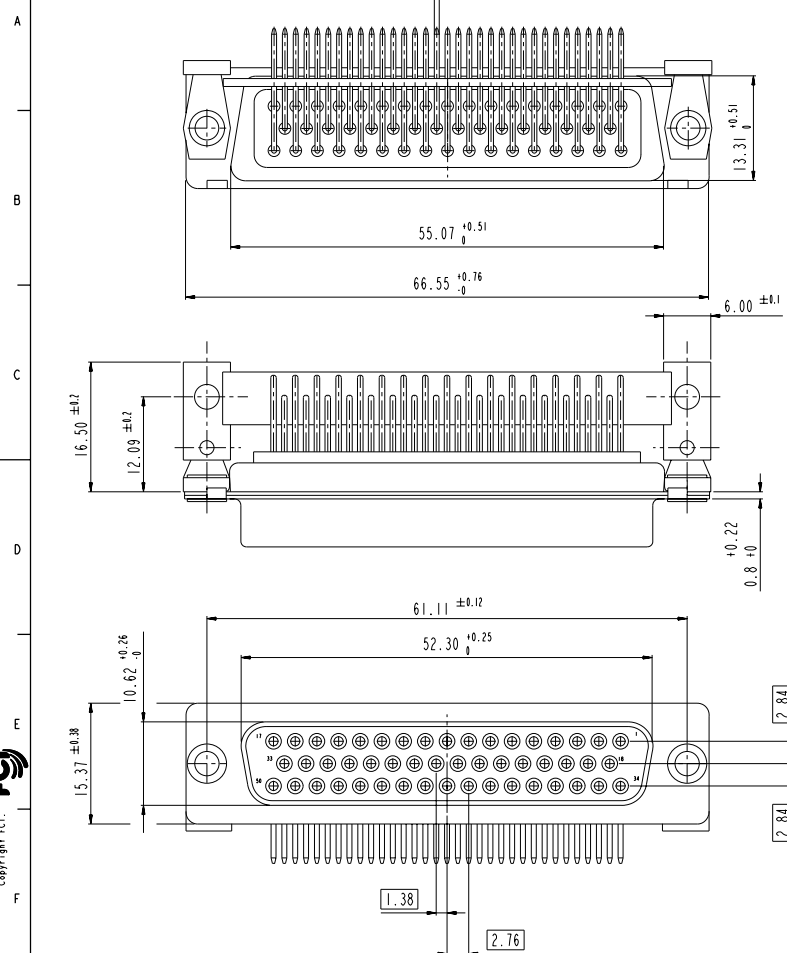


SCALE : 3





www.fciconnect.com			surface 150 450 150 450 TOLERANCES UNLESS OTHERWISE SPECIFIED		✓ tolerance std 150 450 150 450	projection 	mm
Dr	M PESSON	2006/11/14	ANGULAR	0.1	0.1	size	Scale
Eng	P LEGARE	2006/11/14	LINEAR	0.15	0.15	A2	2:1
Chr	P LEGARE	2006/11/14	0.1 ± 0.1	0.15	0.05	ECN	LS06-014
Appr	P LEGARE	2006/11/14	Product family	- Spec ref			
 SUB FEMALE DM H508 series			deg to with right angle contact		C01-8637-1748		Rev A
original			CUSTOMER		sheet 1 of 2		



Contact us: [sales@integrated-circuit.com](mailto:sales@integrated-circuit.com) Website: [www.integrated-circuit.com](http://www.integrated-circuit.com)

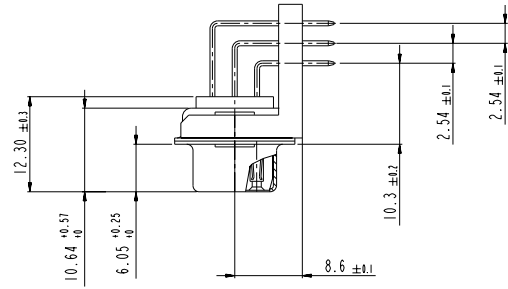
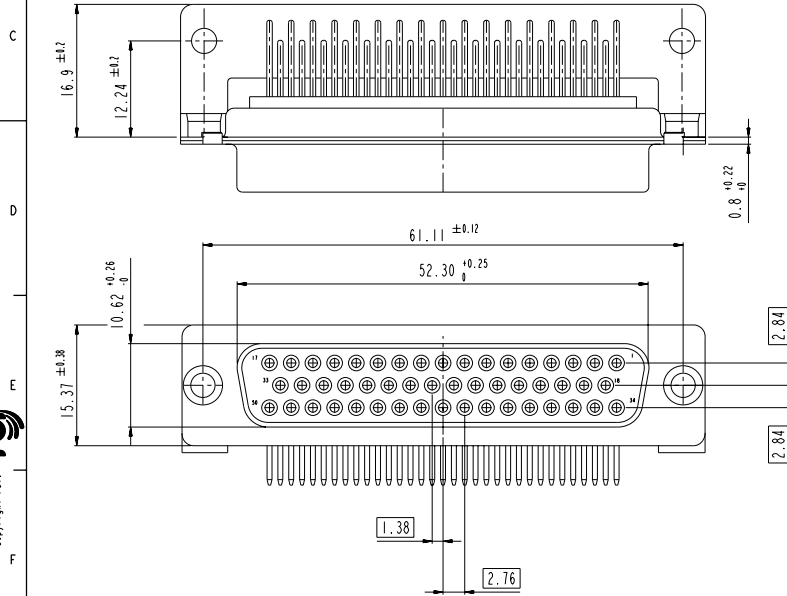
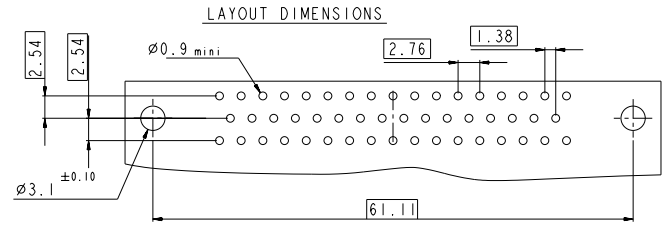
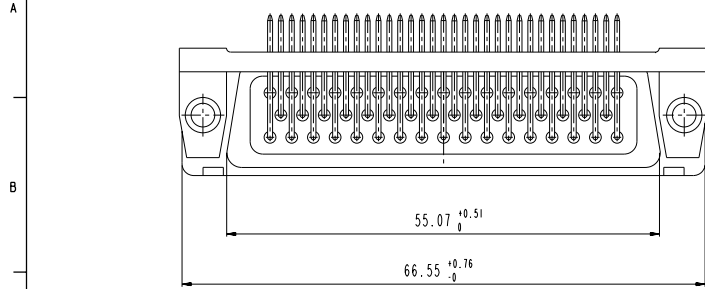


SCALE: 3

www.fciconnect.com			Surface <input checked="" type="checkbox"/> 150 1392		Tolerance <input checked="" type="checkbox"/> 150 404 150 1101		projection 		mm 	
TOLERANCES UNLESS OTHERWISE SPECIFIED										
Dr	M	PESSON	2006/11/14	ANGULAR	0.1	0.3	size	A2	Scale	2:1
Chr	P	LEGARE	2006/11/14	LINEAR	0.1X	0.01				
Eng	P	LEGARE	2006/11/14		0.1X	0.05	ECN	LS06-014		
Appr	P	LEGARE	2006/11/14	Product family				- Spec ref		
 SUB FEMALE DM H508 series with right angle contact C01-8637-1748 CUSTOMER Sheet 1 of 1 Rev A										

Contact us: [sales@integrated-circuit.com](mailto:sales@integrated-circuit.com) Website: [www.integrated-circuit.com](http://www.integrated-circuit.com)

SHELL SIZE D WITH PLASTIC BRACKET (50 contacts)



SCALE: 3

www.fciconnect.com				surface	tolerance std	projection	mm
				150 120	150 100 150 150		
				TOLERANCES UNLESS OTHERWISE SPECIFIED			
Dr	M PESSON	2006/11/14		ANGULAR	0.1	±0.3	size
Eng	P LEGARE	2006/11/14		LINEAR	0.1X	±0.1	A2
Chr	P LEGARE	2006/11/14	9° ±2°		0.1XX	±0.05	ECN
Appr	P LEGARE	2006/11/14	Product family				Spec ref
				SUB FEMALE DM HE508 series			
				with right angle contact			
				C01-8637-1748			
				CUSTOMER			
				sheet 9 of 9			

RDS: Rev A

STATUS: Rev A

Revised: Jun 18, 2015