



Distributor of FCI: Excellent Integrated System Limited

Datasheet of 90099-318 - Connector Receptacle 18 Position 0.100" (2.54mm) Gold Through Hole

Contact us: sales@integrated-circuit.com Website: www.integrated-circuit.com

Excellent Integrated System Limited

Stocking Distributor

Click to view price, real time Inventory, Delivery & Lifecycle Information:

[FCI](#)

[90099-318](#)

For any questions, you can email us directly:

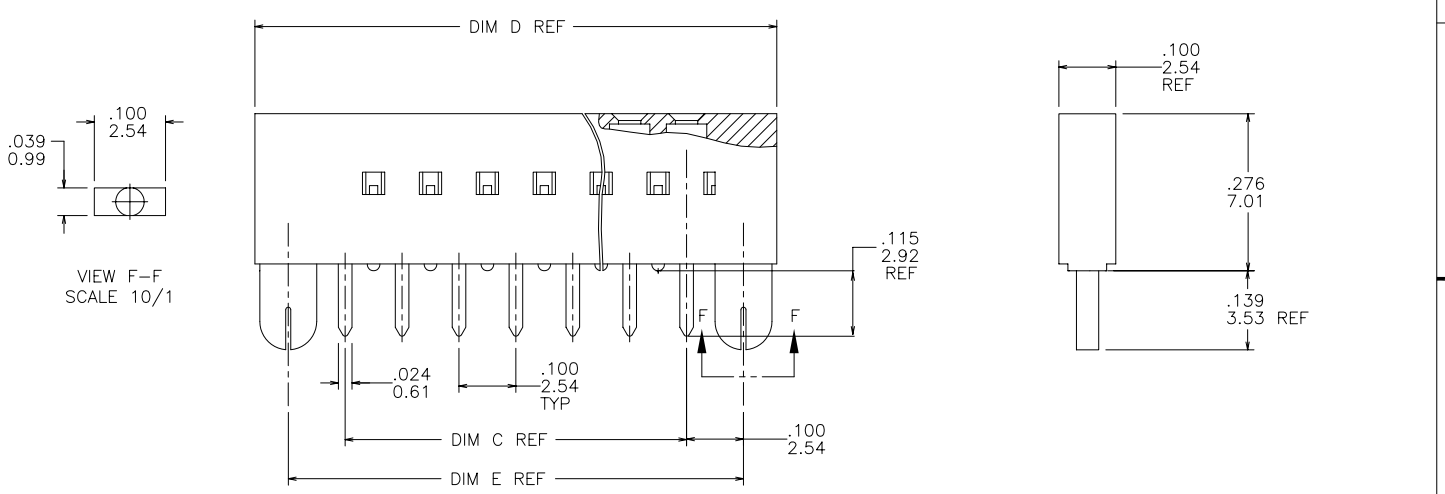
sales@integrated-circuit.com

PRODUCT NO.

SEE TABLE

90099 - XXX - LF

- LEAD FREE OPTION
- PACKAGING OPTIONS OMIT IF NOT REQUIRED.
- NO. OF POSITIONS PER ROW
- PLATING CODE
- BASE PART NUMBER



VIEW F-F
SCALE 10/1

| mat'l. code | | | surface | tolerance | projection | product family |
|-------------|----------|-------|----------|---------------------------------------|-------------------|-------------------------------|
| - | | | ISO 1302 | ISO 406 | ISO 1101 | DUBOX |
| ltr | ecr | no/dr | date | tolerances unless otherwise specified | | title |
| F | V41021 | MRC | 8/2/94 | angles | .XX ±.01/.3 | DUBOX LATCHED THRU MOUNT |
| G | V50511 | MRC | 6/29/95 | linear | .XXX ±.005/.13 | S/R VERTICAL CARD CONN. ASS'Y |
| H | V03-0311 | HTB | 5/23/03 | 0°±2' | .XXXX ±.0020/.081 | scale 8:1 |
| J | V05-0463 | DPU | 06/29/05 | dr | J.SHREINER | 12/3/90 |
| K | M06-0237 | AEA | 06/23/06 | enrg | M. HAHN | 12/3/90 |
| L | M06-0433 | AGS | 10/31/06 | chr | M. HAHN | 12/3/90 |
| M | M07-0203 | MHT | 5/01/007 | appd | M. HAHN | 12/3/90 |
| sheet | revision | M | M | M | M | M |
| index | sheet | 1 | 2 | 3 | 4 | 5 |

NOTES.

1. HOUSING MATERIAL; P.P.S. FILLED
COLOR:BLACK
FLAME RETARDENT PER UL-94-V0.
PART WILL WITHSTAND EXPOSURES TO 260°C
PEAK TEMPERATURE FOR 20 SECONDS IN WAVE SOLDER,
INFRA-RED OR VAPOR PHASE SOLDER PROCESS.
2. TERMINAL MATERIAL
PHOSPHOR BRONZE. EXTRA HARD.
3. RECOMMENDED APPLICATION DATA.
 - A. RECOMMENDED HOLE PATTERN IS SHOWN IN FIGURE A.
 - B. ALL MATING PINS TO BE .025/.64 SQUARE ON TRUE CENTER OF GIVEN SPACINGS WITHIN .015/.38 DIAMETER.
 - C. SUGGESTED MATING PIN LENGTH .210 ±.020 / .33 ±.51.
 - D. TERMINAL CAN ONLY BE USED FOR PC BOARD WITH NON-PLATED THROUGH HOLES.
 - E. RECOMMENDED PC BOARD THICKNESS, .062/1.58.
4. PREPLATED POST STAMPED TERMINALS.
5. "FCI", FCI FINAL PART NUMBER AND DATE CODE TO BE MARKED ON TUBE LABEL.
6. ADD LF SUFFIX AT THE END OF PART NUMBER FOR LEAD FREE OPTION.
7. THESE PRODUCTS MEETS EUROPEAN UNION DIRECTIVES AND OTHER COUNTRY REGULATION AS DESCRIBED IN GS-22-008.
8. "THIS PRODUCT HAS 100% TIN PLATING IN THE INTERFACE AND HAS NOT BEEN TESTED FOR WHISKER GROWTH IN ALL INTERCONNECT ENVIRONMENT".
9. PLATING OPTIONS:
MAY BE EITHER GOLD OR GXT PLATED AT MANUFACTURER'S OPTION.

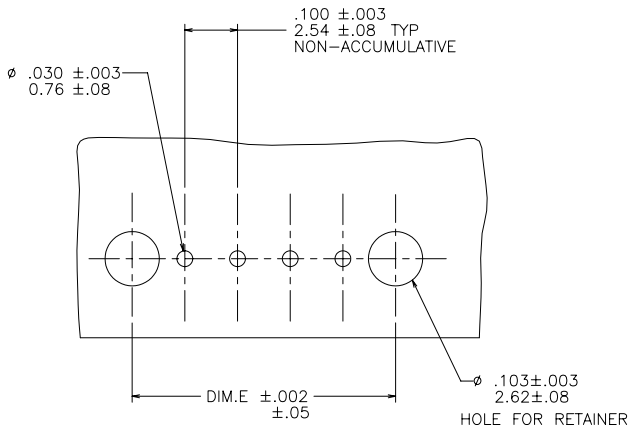


FIGURE A

| | | | | | |
|-------------|----------|----------|-------------------|------------|-------------------------------|
| mat'l. code | | surface | tolerance | projection | product family |
| - | | ISO 1302 | ISO 406 | ISO 1101 | DUBOX |
| ltr | ecr | no | dr | date | title |
| M | | | | | DUBOX LATCHED THRU MOUNT |
| | | angles | linear | INCH/MM | S/R VERTICAL CARD CONN. ASS'Y |
| | | 0°±2' | .XX ±.01/3 | scale 8:1 | dwg no |
| | | dr | .XXX ±.005/.13 | | sheet 2 of 5 |
| | | enr | .XXXX ±.0020/.051 | | size |
| | | chr | | | 90099 |
| | | appd | | | A3 |
| | | | | | type |
| | | | | | Product Customer Drawing |
| sheet | revision | | | | |
| index | sheet | | | | |

| PRODUCT NO NOTE 6 | PLATING CONTACT AREA | PLATING SOLDER TAIL | |
|----------------------|--|--|------------|
| 90099-3XX | 30u"/.76u Au MIN OVER 50u"/1.27u Ni MIN | 100u"/160u" 2.54u/4.06u ^{SN} | SEE NOTE 9 |
| 90099-4XX | 100u"/160u" 2.54u/4.06u ^{SN} | 100u"/160u" 2.54u/4.06u ^{SN} | |
| 90099-6XX | 30u"/.76u Au MIN OVER 50u"/1.27u Ni MIN | 100u"/160u" 2.54u/4.06u ^{SN} | SEE NOTE 9 |



Copyright FCI

| | | | | | |
|---------------------------------------|------------|----------|-----------|--------------------------|-------------------------------|
| mat'l. code | | surface | tolerance | projection | product family |
| - | | ISO 1302 | ISO 408 | | DUBOX |
| | | | ISO 1101 | | |
| ltr | ecn no | dr | date | title | |
| M | | | | DUBOX LATCHED THRU MOUNT | |
| tolerances unless otherwise specified | | | | INCH/MM | S/R VERTICAL CARD CONN. ASS'Y |
| angles | | | | linear | scale 8:1 |
| | | | | xxx ±.01/.3 | dwg no |
| | | | | xxx ±.005/.13 | sheet 3 of 5 |
| | | | | xxxx ±.0020/.051 | size |
| | | | | | A3 |
| | | | | | type Product Customer Drawing |
| dr | J.SHREINER | 12/3/90 | | | |
| enr | M. HAHN | 12/3/90 | | | |
| chr | M. HAHN | 12/3/90 | | | |
| appd | M. HAHN | 12/3/90 | | | |
| sheet | revision | | | | |
| index | sheet | | | | |

| PRODUCT NO. | NO. OF POS. | DIM C | DIM D | DIM E | LF OPTIONS |
|-------------|-------------|-------------|-------------|-------------|------------|
| 90099-Y02 | 1 X 2 | .100/2.54 | .417/10.59 | .300/7.62 | NOTE 6 |
| -Y03 | 1 X 3 | .200/5.08 | .517/13.13 | .400/10.16 | |
| -Y04 | 1 X 4 | .300/7.62 | .617/15.67 | .500/12.70 | |
| -Y05 | 1 X 5 | .400/10.16 | .717/18.21 | .600/15.24 | |
| -Y06 | 1 X 6 | .500/12.70 | .817/20.75 | .700/17.78 | |
| -Y07 | 1 X 7 | .600/15.24 | .917/23.29 | .800/20.32 | |
| -Y08 | 1 X 8 | .700/17.78 | 1.017/25.83 | .900/22.86 | |
| -Y09 | 1 X 9 | .800/20.32 | 1.117/28.37 | 1.000/25.40 | |
| -Y10 | 1 X 10 | .900/22.86 | 1.217/30.91 | 1.100/27.94 | |
| -Y11 | 1 X 11 | 1.000/25.40 | 1.317/33.45 | 1.200/30.48 | |
| -Y12 | 1 X 12 | 1.100/27.94 | 1.417/35.99 | 1.300/33.02 | |
| -Y13 | 1 X 13 | 1.200/30.48 | 1.517/38.53 | 1.400/35.56 | |
| -Y14 | 1 X 14 | 1.300/33.02 | 1.617/41.07 | 1.500/38.10 | |
| -Y15 | 1 X 15 | 1.400/35.56 | 1.717/43.61 | 1.600/40.64 | |
| -Y16 | 1 X 16 | 1.500/38.10 | 1.817/46.15 | 1.700/43.18 | |
| -Y17 | 1 X 17 | 1.600/40.64 | 1.917/48.69 | 1.800/45.72 | |
| -Y18 | 1 X 18 | 1.700/43.18 | 2.017/51.23 | 1.900/48.26 | |
| -Y19 | 1 X 19 | 1.800/45.72 | 2.117/53.77 | 2.000/50.80 | |
| -Y20 | 1 X 20 | 1.900/48.26 | 2.217/56.31 | 2.100/53.34 | |
| -Y21 | 1 X 21 | 2.000/50.80 | 2.317/58.85 | 2.200/55.08 | |
| -Y22 | 1 X 22 | 2.100/53.34 | 2.417/61.39 | 2.300/58.42 | |
| -Y23 | 1 X 23 | 2.200/55.88 | 2.517/63.93 | 2.400/60.96 | |
| -Y24 | 1 X 24 | 2.300/58.42 | 2.617/66.47 | 2.500/63.50 | |
| 90099-Y25 | 1 X 25 | 2.400/60.96 | 2.717/69.01 | 2.600/66.04 | |

| | | | | | | | | | | |
|-------------|----------|----------|------|---------------------------------------|---------|-------------------|-----------|-------------------------------|--|--------------------------|
| mat'l. code | | surface | | tolerance | | projection | | product family | | |
| - | | ISO 1302 | | ISO 406 | | ISO 1101 | | DUBOX | | |
| ltr | ecn | no | dr | tolerances unless otherwise specified | | INCH/MM | | title | | |
| M | | | | angles | linear | .XX ±.01/.3 | | DUBOX LATCHED THRU MOUNT | | |
| | | | | | | .XXX ±.005/.13 | | S/R VERTICAL CARD CONN. ASS'Y | | |
| | | | | 0'±2' | | .XXXX ±.0020/.081 | scale 8:1 | dwg no | | |
| | | | dr | J.SHREINER | 12/3/90 | | | sheet 4 of 5 size | | |
| | | | enrg | M. HAHN | 12/3/90 | | | 90099 | | A3 |
| | | | chr | M. HAHN | 12/3/90 | | | type | | Product Customer Drawing |
| | | | appd | M. HAHN | 12/3/90 | | | | | |
| sheet index | revision | sheet | | | | | | | | |

| PRODUCT NO. | NO. OF POS. | DIM C | DIM D | DIM E | LF OPTIONS |
|-------------|-------------------|-------------------------|-------------------------|-------------------------|------------|
| 90099-Y26 | 1 X 26 | 2.500/63.50 | 2.817/71.55 | 2.700/68.58 | NOTE 6 |
| -Y27 | 1 X 27 | 2.600/66.04 | 2.917/74.09 | 2.800/71.12 | |
| -Y28 | 1 X 28 | 2.700/68.58 | 3.017/76.63 | 2.900/73.66 | |
| -Y29 | 1 X 29 | 2.800/71.12 | 3.117/79.17 | 3.000/76.20 | |
| -Y30 | 1 X 30 | 2.900/73.66 | 3.217/81.71 | 3.100/78.74 | |
| -Y31 | 1 X 31 | 3.000/76.20 | 3.317/84.25 | 3.200/81.28 | |
| -Y32 | 1 X 32 | 3.100/78.74 | 3.417/86.79 | 3.300/83.82 | |
| -Y33 | 1 X 33 | 3.200/81.28 | 3.517/89.33 | 3.400/86.36 | |
| -Y34 | 1 X 34 | 3.300/83.82 | 3.617/91.87 | 3.500/88.90 | |
| -Y35 | 1 X 35 | 3.400/86.36 | 3.717/94.41 | 3.600/91.44 | |
| -Y36 | 1 X 36 | 3.500/88.90 | 3.817/96.95 | 3.700/93.98 | |
| -Y37 | 1 X 37 | 3.600/91.44 | 3.917/99.49 | 3.800/96.52 | |
| -Y38 | 1 X 38 | 3.700/93.98 | 4.017/102.03 | 3.900/99.06 | |
| -Y39 | 1 X 39 | 3.800/96.52 | 4.117/104.57 | 4.000/101.60 | |
| -Y40 | 1 X 40 | 3.900/99.06 | 4.217/107.11 | 4.100/104.14 | |
| -Y41 | 1 X 41 | 4.000/101.60 | 4.317/109.65 | 4.200/106.68 | |
| -Y42 | 1 X 42 | 4.100/104.14 | 4.417/112.19 | 4.300/109.22 | |
| -Y43 | 1 X 43 | 4.200/106.68 | 4.517/114.73 | 4.400/111.76 | |
| -Y44 | 1 X 44 | 4.300/109.22 | 4.617/117.27 | 4.500/114.30 | |
| -Y45 | 1 X 45 | 4.400/111.76 | 4.717/119.81 | 4.600/116.84 | |
| -Y46 | 1 X 46 | 4.500/114.30 | 4.817/122.35 | 4.700/119.38 | |
| -Y47 | 1 X 47 | 4.600/116.84 | 4.917/124.89 | 4.800/121.92 | |
| 90099-Y48 | 1 X 48 | 4.700/119.38 | 5.017/127.43 | 4.900/124.46 | |
| 90099-Y49 | 1 X 49 | 4.800/121.92 | 5.117/129.97 | 5.000/127.00 | --- OBS. |
| 90099-Y50 | 1 X 50 | 4.900/124.46 | 5.217/132.51 | 5.100/129.54 | --- OBS. |

| | | | | | | | | | |
|-------------|--|---|--|---------------------------------------|--|------------|--|-----------------------------------|--|
| mat'l. code | | surface <input checked="" type="checkbox"/> ISO 1302 <input type="checkbox"/> ISO 408 <input type="checkbox"/> ISO 1101 | | tolerance | | projection | | product family | |
| - | | | | tolerances unless otherwise specified | | | | DUBOX | |
| ltr | | ecn no dr date | | angles | | INCH/MM | | title | |
| M | | | | linear | | scale 8:1 | | DUBOX LATCHED THRU MOUNT | |
| | | | | 0°±2' | | | | S/R VERTICAL CARD CONN. ASS'Y | |
| | | | | dr J.SHREINER 12/3/90 | | | | dwg no 90099 sheet 5 of 5 size A3 | |
| | | | | enr M. HAHN 12/3/90 | | | | type Product Customer Drawing | |
| | | | | chr M. HAHN 12/3/90 | | | | | |
| | | | | appd M. HAHN 12/3/90 | | | | | |
| sheet index | | revision sheet | | | | | | | |