

## Excellent Integrated System Limited

Stocking Distributor

Click to view price, real time Inventory, Delivery & Lifecycle Information:

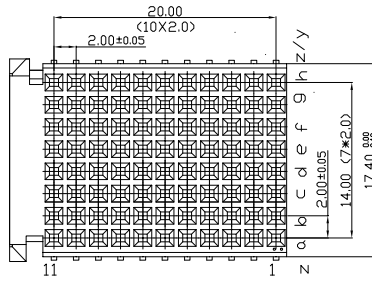
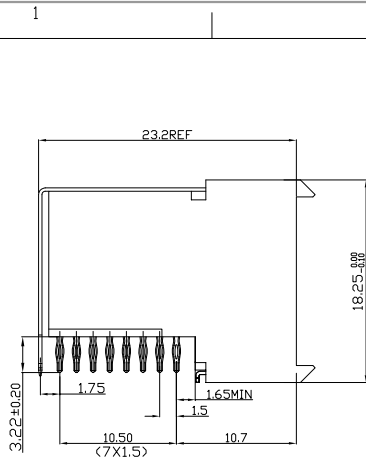
[FCI](#)  
[HM2R83PA8101N9LF](#)

For any questions, you can email us directly:  
[sales@integrated-circuit.com](mailto:sales@integrated-circuit.com)

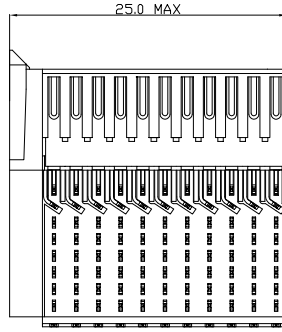
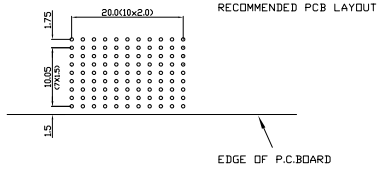
Tous droits strictement réservés. Reproduction ou communication à des tiers interdite sous quelque forme que ce soit sans autorisation écrite du Propriétaire. Propriété de c FCI. Droits de reproduction FCI.



All rights strictly reserved. Reproduction or issue to third parties in any form whatever is not permitted without written authority from the proprietor. Property of FCI. Copyright FCI.



**PERFORMANCE CHARACTERISTICS**  
 CURRENT RATING 1.5A AT 20°C (FULLY LOADED)  
 1 A AT 70°C (FULLY LOADED)  
 RATED VOLTAGE 500 V AC (CONT /CONT)  
 OPERATING TEMPERATURE -55°C TO 125°C  
 CONTACT RESISTANCE 20 MΩ MAX  
 INSERTION FORCE 0.75N MAX/CONT  
 EXTRACTION FORCE 0.15N MIN/CONT  
 INSULATION RESISTANCE 10<sup>4</sup> MΩ MIN



- NOTES 1:**
- LEAD FREE INDICATOR LF=LEAD FREE
  - PERFORMANCE LEVEL INDICATOR (REF 246 N9305 200443003)
  - 2. THIS PRODUCT IS CSA APPROVED. THIS PRODUCT IS UL RECOGNIZED.
  - 3. FOR RECOMMENDED PTH DIMENSIONS REFER DRAWING : BSA201572.001
  - 4. THIS PRODUCT (LF) MEETS EUROPEAN UNION DIRECTIVES AND OTHER COUNTRY REGULATIONS AS DESCRIBED IN GS-22-008

www.fciconnect.com		tolerance 1DEC +0.2 1DEC 2DEC +0.1 2DEC ANGLES 45° HOEKEN	projection MM
Dr W.Panis	30-04-96	Product family MILLIPICS	size A4 Scale 3/1
Eng		Spec ref	ECN
Chr		Material	
Appr			
rev	ecn no	dr	date
A	CONVERSION	KN	14-09-01
B	REVISION III		
B	0605-0381	Kason	10-10-05
C	0607-0362	Kason	05-09-07
D	0610-010	NZ	05-30-10
MPACS 8+2R RA RCP CONN TYPE F SHIELDED W/O PEG		2 0 0 0	BS,C ,202260,005
catalog no	HM2R83PA8101----	CUSTOMER	sheet 1 of 1