

Excellent Integrated System Limited

Stocking Distributor

Click to view price, real time Inventory, Delivery & Lifecycle Information:

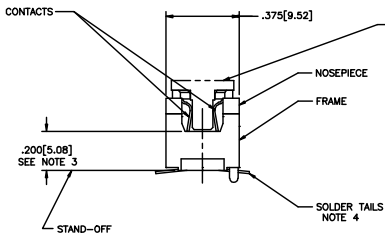
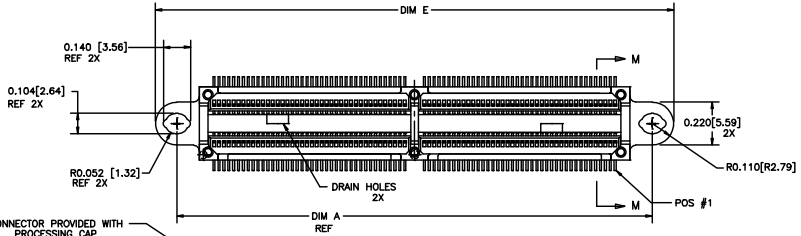
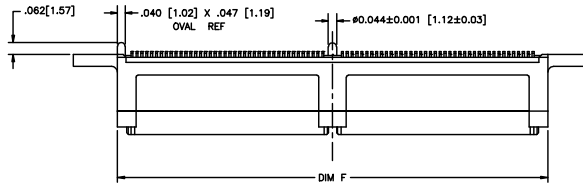
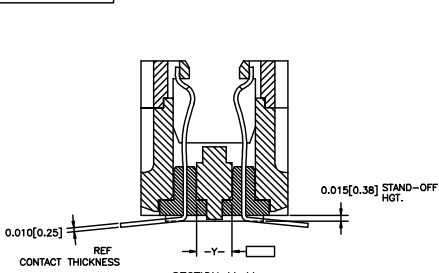
[FCI](#)

[91403-001LF](#)

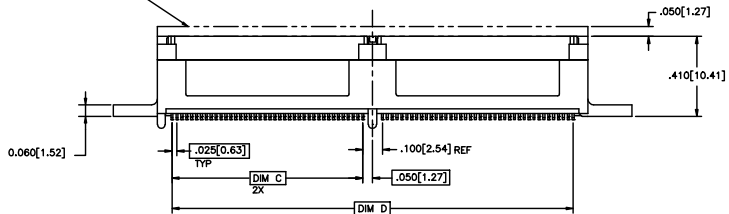
For any questions, you can email us directly:

sales@integrated-circuit.com

PRODUCT NUMBER
SEE TABLE

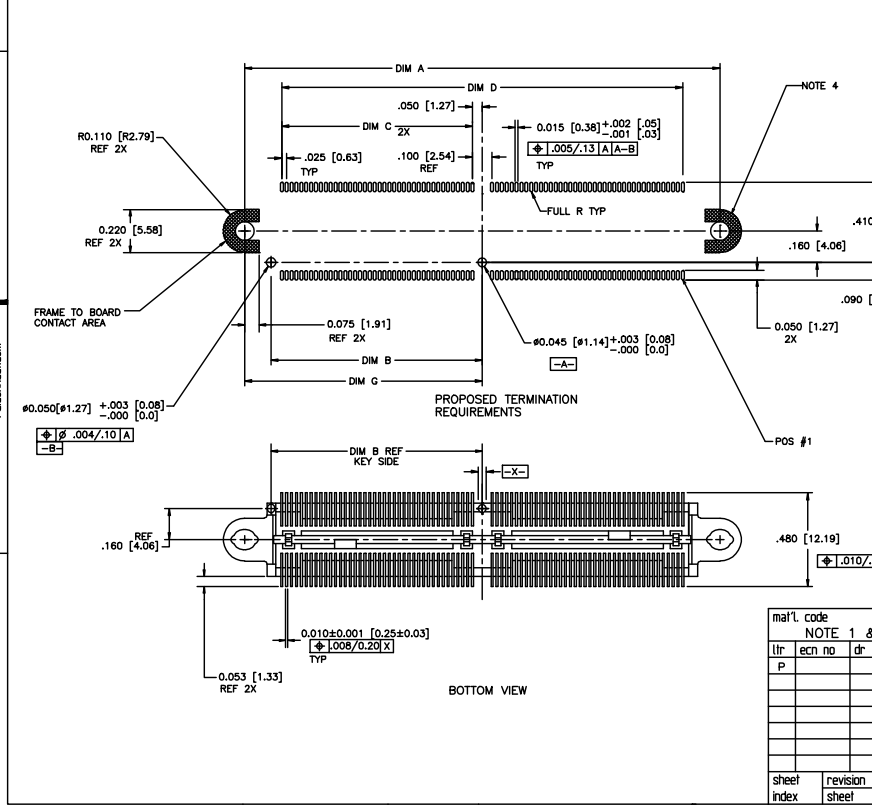


CONNECTOR PROVIDED WITH PROCESSING CAP NOTE 5



mat'l. code	NOTE 1 & 2	Surface	ISO 1902	tolerance	ISO 145	projection	product family
Uir	ecm no	dr	date	tolerances unless otherwise specified	ISO 1101	INCH/MM	MICROPAX
H	C70095	SAR	7/22/97	angles	XXX.X/XXX.X	scale 1:1	title
J	B81703	EPK	9/25/98	linear	XXX.X/XXX.X		.025M SURFACE MOUNT RECEPT., DOUBLE MODULE
K	V12473	MEM	10/10/01	0°±2'	XXX.X/XXX.X		dwg no
L	V12850	MEM	11/02/01	dr	XXX.X/XXX.X		sheet 1 of 2 size
M	MG4-0216	MHT	11/17/04	engr	XXX.X/XXX.X		91403
N	MG6-0279	AEA	7/22/06	chr	XXX.X/XXX.X		A3
P	MG8-0271	MHT	9/25/08	appd	XXX.X/XXX.X		type Product Customer Drawing
sheet	revision	P	P				
index	sheet	1	2				

PRODUCT NUMBER	NO. OF CONTACTS	DIM A	DIM B	DIM C	DIM D	DIM E	DIM F	DIM G	CONTACT PLATING NOTE 2
91403-001	120	1.930/49.02	.830/21.08	.725/18.42	1.550/39.37	2.150/54.61	1.700/43.18	.965/24.51	30 GXT
91403-001LF									
91403-002	160	2.430/61.72	1.080/27.43	.975/24.76	2.050/52.07	2.650/67.31	2.200/55.88	1.215/30.86	30 GXT
91403-002LF									
91403-003	200	2.930/74.42	1.330/33.78	1.225/31.12	2.550/64.77	3.150/80.01	2.700/68.58	1.465/37.21	30 GXT
91403-003LF									
91403-403	200	2.930/74.42	1.330/33.78	1.225/31.12	2.550/64.77	3.150/80.01	2.700/68.58	1.465/37.21	60 GXT
91403-403LF									



NOTES:

- ① MATERIALS:
DIELECTRIC: LCP
CONTACTS: BeCu
FRAME: ZINC ALLOY #3
- ② PLATING:
SOLDER TAILS:
TIN LEAD: 150u"/3.81um Sn Pb
LEAD FREE OPTION: 150u"/3.81um Sn
FRAME: 100u"/2.54um Ni
CONTACTS: 30u"/.76um GXT OVER 50u"/1.27um Ni
OR 60u"/1.52um GXT OVER 75u"/1.90um Ni.
- ③ WHEN THE CONNECTOR IS MATED WITH THE OPPOSITE HALF, THE PARALLEL BD. TO BD. HGT. IS .47 ±.01. (APPLYS TO VERT. THRU & SURFACE MT. STYLES)
- ④ THE SOLDER TAILS ON THIS PRODUCT ARE DESIGNED TO BE COMPLIANT IN ORDER TO ACCOMMODATE PRINTED CIRCUIT BOARD DIMENSIONAL VARIATIONS. THEREFORE, HOLDDOWN HARDWARE IS REQUIRED TO SECURE THE CONNECTOR TO THE PRINTED CIRCUIT BOARD FOR MOST TYPES OF SOLDER REFLOW OPERATIONS. FOR FURTHER APPLICATION DATA, INCLUDING HOLE SIZES FOR VARIOUS TYPES OF HARDWARE, SEE TA-932.
- ⑤ DO NOT REMOVE PROCESSING CAP UNTIL SOLDERING IS COMPLETED. CAP WILL PREVENT POTENTIAL NOSE PIECE BOW DURING HIGH TEMP. SOLDERING PROCESS.
- ⑥ PART NUMBERS WITH LF IN THE END ARE LEAD FREE OPTION.
EXAMPLE: 91403-XXX LF
- ⑦ THIS PRODUCT MEETS EUROPEAN UNION DIRECTIVES AND OTHER COUNTRY REGULATION AS DESCRIBED IN GS-22-008.
- ⑧ THE HOUSING WILL WITHSTAND EXPOSURE TO 260° PEAK TEMPERATURE FOR 20 SECONDS IN A CONVECTION, INFRA-RED OR VAPOR PHASE REFLOW OVEN.

mat'l. code	NOTE 1 & 2	Surface ISO 1902	tolerance ISO 146	projection	product family
lir	ecn no	dr	date	tolerances unless otherwise specified	title
P				linear	MICROPAX
				0°±2'	.025M SURFACE MOUNT RECEPT., DOUBLE MODULE
				dr	M. HERNANDEZ 11/17/04
				engr	F. SALAS 11/17/04
				chr	F. SALAS 11/17/04
				appd	F. SALAS 11/17/04
sheet index	revision sheet				dwg no 91403
					sheet 2 of 2 size A3
					type Product Customer Drawing