

Excellent Integrated System Limited

Stocking Distributor

Click to view price, real time Inventory, Delivery & Lifecycle Information:

[FCI](#)

[70424-003](#)

For any questions, you can email us directly:

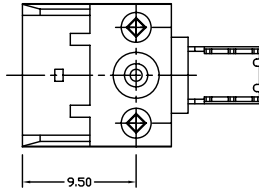
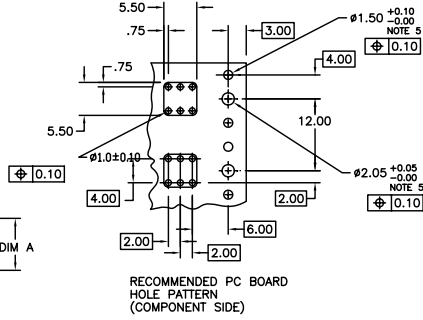
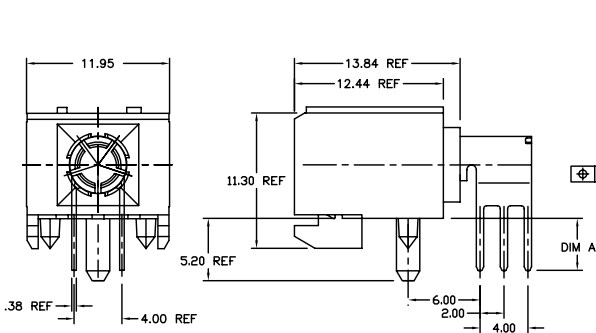
sales@integrated-circuit.com



FCIconnect.com

Copyright FCI

PRODUCT NO.	PCB THICKNESS	DIM A
70424-002	2.4	3.5
70424-003	1.6	2.7
70424-002LF	2.4	3.5
70424-003LF	1.6	2.7



NOTES:

1. BODY MATERIAL: LCP, 30% GLASS-FILLED, FLAME RETARDANT, ACC, UL94-V0
2. TERMINAL MATERIAL: BeCu
3. PLATING SOLDER TAILS: FOR 70424-0XX SnPb FOR 70424-0XXLF Sn (LEAD FREE)
4. PLATING CONTACT AREA: 0.80µm Au OVER 1.3µm Ni.
5. INDICATED HOLES ARE UNPLATED
6. PRODUCT MARKETING: PART NUMBER & BATCH I.D.
7. THE PRODUCTS WHERE THE PART NUMBER ENDS IN "LF" MEET THE EUROPEAN DIRECTIVES AND OTHER COUNTRY REGULATIONS AS DESCRIBED IN GS-22-008.
8. ALL PRODUCTS WILL WITHSTAND EXPOSURE TO 260° FOR 60 SECONDS IN A CONVECTION, INFRA-RED OR VAPOR PHASE REFLOW OVEN.

mat'l. code		surface		tolerance		projection	product family
		ASME Y14.5	ASME Y14.5	ASME Y14.5	ASME Y14.5		METRAL (tm)
lit	ec'd no	dr	date	tolerances unless otherwise specified		MM	title
A	V61323	SAR	1996-09-09	angles	X +3	scale 1:1	POWER CONNECT. ASS'Y W/ METRAL HSG 70292
B	V61725	SAR	1996-11-18	XX ±9			
C	V61212	MDF	1998-06-17	0° ±2'	XXX ±051	FCI	sheet 1 of 1 size 70424 A4
D	V01598	JWS	2007-07-12	dr	S. ROYER 1996-09-09		
E	V05-0778	JRV	2005-08-15	engr	C. PENDLETON 1996-09-09	type	CUSTOMER Drawing
F	V06-0606	JRV	2006-06-20	ctt	C. PENDLETON 1996-09-09		
sheet index	revision sheet	F	1	appd			

form: A6mmXLC