

## Excellent Integrated System Limited

Stocking Distributor

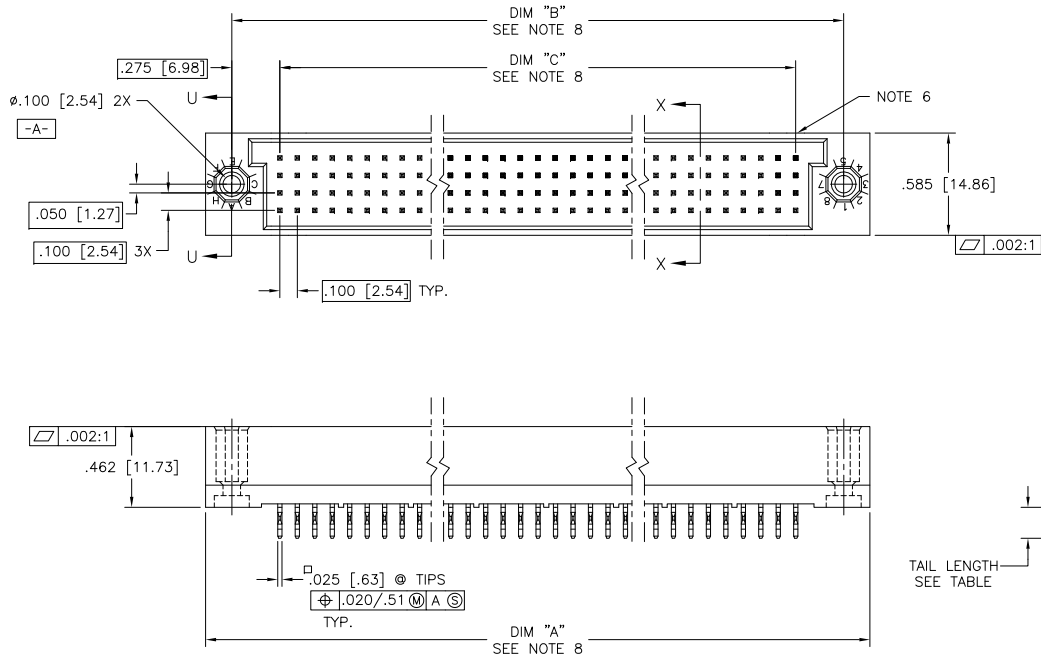
Click to view price, real time Inventory, Delivery & Lifecycle Information:

[FCI](#)  
[50760-C112C](#)

For any questions, you can email us directly:

[sales@integrated-circuit.com](mailto:sales@integrated-circuit.com)

PRODUCT NUMBER  
SEE TABLE



mat'l. code		surface		tolerance		projection		product family	
-		ISO 1302		ISO 406		INCH/MM		HPC	
ltr	ec'n no	dr	date	tolerances unless otherwise specified		INCH/MM		title	
J	EX-1-19010	MJA	10/08/14	linear	.XX ±.01/.3	scale 1:1		4 ROW VERTICAL HEADER	
-	-	-	-	angles	.XXX ±.005/.13			MULTI-PLATED P.F. PINS, 0 G.P.	
D	v90011	HTB	1/06/99	σ±z	.XXXX ±.0020/.051			dwg no 50760 sheet 1 of 5 size A3	
E	v00276	JWS	2/02/00	dr	P. PARSONS	4/12/94		FCI	
F	v05-0776	DCH	8/15/05	engr	M JACOB	10/08/14		Type Product Customer Drawing	
G	v05-1048	DAI	11/16/05	chr	ALOSIUS STALIN	10/08/14			
H	M06-0261	AEA	7/10/06	appd	BIJU K PAUL	10/08/14			
sheet	revision	J	H	J	H	A			
index	sheet	1	2	3	4	5			

PDS: Rev .J

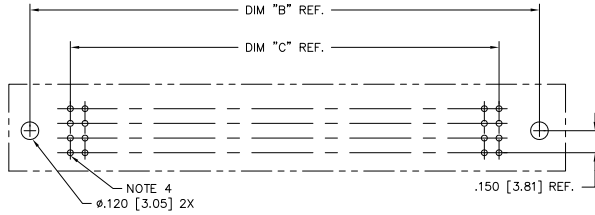
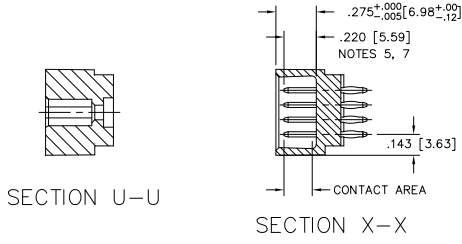
STATUS:Released

Printed: Oct 10, 2014

FCI  
FCIconnect.com

Copyright FCI

PRODUCT NUMBER  
SEE TABLE



RECOMMENDED PCB LAYOUT  
(ALL HOLES LOCATED ON .100/2.54 GRID  
UNLESS OTHERWISE SPECIFIED)

NOTES:

- ① PRODUCT NUMBERING CODE:  
50760 - X YYY Z LF  
  - X LEAD FREE (OPTIONAL)
  - YYY TAIL LENGTH (SEE TABLE)
  - Z NO. OF POSITIONS (NOTE 2)
  - LF PLATING (SEE TABLE)
  - BASE NUMBER
- ② THIS PRODUCT IS CONFIGURED IN SIZES OF 6 thru 80 COLUMNS IN INCREMENTS OF ONE.  
i.e.: 6,7,8,9,.....79,80.
- ③ HOUSING MATERIAL: GLASS AND MINERAL FILLED HIGH TEMP. THERMOPLASTIC. FLAME RETARDANT PER UL94V-0. COLOR: BLACK.  
PIN MATERIAL: PHOS BRONZE
- ④  $\phi$ .0453/1.151 DRILLED HOLE PLATED WITH .0003/007 MIN. SnPb OVER .001/.03 to .003/.08 Cu. PLATING TO ACHIEVE A  $\phi$ .040 $\pm$ .003/1.02 $\pm$ .08 HOLE.
- ⑤ TO ASSURE PROPER INSTALLATION: TOOLING, AS SPECIFIED IN INSTRUCTION MANUAL 155915-001 MUST BE USED. PIN MATING LENGTH WILL BE  $\pm$ .002/.05 AFTER INSTALLATION.
- ⑥ COMPANY NAME, PART NUMBER AND LOT CODE TO APPEAR ON THIS SURFACE PER BUS-22-108.
- ⑦ REFERENCE 50807 FOR F.M.L.B. AVAILABLE OPTIONS AND WORKSHEET.
- ⑧ LENGTH DIMENSION CALCULATIONS:  
DIM A: .100/2.54 X NO. OF COLUMNS + .750/19.05  
DIM B: .100/2.54 X NO. OF COLUMNS + .450/11.43  
DIM C: .100/2.54 X NO. OF COLUMNS - .100/2.54
- ⑨ THIS PRODUCT (WITH "LF" SUFFIX) MEETS EUROPEAN UNION DIRECTIVES AND OTHER COUNTRY REGULATIONS AS DESCRIBED IN GS-22-008.
- ⑩ THIS HOUSING WILL WITHSTAND EXPOSURE TO 260 °C PEAK TEMPERATURE FOR 10-30 SECONDS IN A CONVECTION, INFRA-RED OR VAPOR PHASE OVEN.

mat'l. code		surface		tolerance		projection		product family	
-		ISO 1302		ISO 406		INCH/MM		HPC	
ISO 1101		tolerances unless otherwise specified		.XX $\pm$ .01/.3		scale 1:1		title	
H		linear		.XXX $\pm$ .005/.13		INCH/MM		4 ROW VERTICAL HEADER	
lfr		ecn no		dr		date		MULTI-PLATED P.F. PINS, 0 G.P.	
dr		P. PARSONS		4/12/94		FCI		dwg no	
enr		J. AFTON		4/11/95		A3		sheet 2 of 5 size	
chr		G. PETERS		4/15/94		50760		Type	
appd		S. CLARK		4/18/94		Product Customer Drawing		index	
sheet		revision		sheet		PDS: Rev J		STATUS:Released	
index		sheet		sheet		Printed: Oct 10, 2014		sheet	

FCI  
FCIconnect.com  
Copyright FCI

PRODUCT NO.	NUMBER OF POSITIONS	PLATING: CONTACT AREA	MIN PLATING: PRESS-FIT AREA	MIN PLATING: TAIL AREA	TAIL LENGTH REF
50760-AYYYA	YYY	30u"/0.76u Au	40u"/1.02u SnPb	40u"/1.02u SnPb	.177 / 4.50
50760-AYYYG	YYY	30u"/0.76u Au	40u"/1.02u SnPb	40u"/1.02u SnPb	.250 / 6.35
50760-BYYYA	YYY	30u"/0.76u GXT	40u"/1.02u SnPb	40u"/1.02u SnPb	.177 / 4.50
50760-BYYALF	YYY	30u"/0.76u GXT	40u"/1.02u Sn	40u"/1.02u Sn	.177 / 4.50
50760-BYYYG	YYY	30u"/0.76u GXT	40u"/1.02u SnPb	40u"/1.02u SnPb	.250 / 6.35
50760-BYYGLF	YYY	30u"/0.76u GXT	40u"/1.02u Sn	40u"/1.02u Sn	.250 / 6.35
50760-CYYYC	YYY	30u"/0.76u Au	40u"/1.02u SnPb	30u"/0.76u Au	.533 / 13.54
50760-CYYVD	YYY	30u"/0.76u Au	40u"/1.02u SnPb	30u"/0.76u Au	.733 / 18.62
50760-DYYYC	YYY	30u"/0.76u GXT	40u"/1.02u SnPb	30u"/0.76u GXT	.533 / 13.54
50760-DYYCLF	YYY	30u"/0.76u GXT	40u"/1.02u Sn	30u"/0.76u GXT	.533 / 13.54
50760-DYYVD	YYY	30u"/0.76u GXT	40u"/1.02u SnPb	30u"/0.76u GXT	.733 / 18.62
50760-DYYDLF	YYY	30u"/0.76u GXT	40u"/1.02u Sn	30u"/0.76u GXT	.733 / 18.62
50760-XX003	180	30u"/0.76u GXT	30u"/0.76u GXT	Au FLASH	SEE SHEET 4
50760-XX003LF	180	30u"/0.76u GXT	30u"/0.76u GXT	Au FLASH	SEE SHEET 4
50760-XX036	80	30u"/0.76u Au	40u"/1.02u SnPb	40u"/1.02u SnPb	SEE SHEET 5
50760-XX036LF	80	30u"/0.76u Au	40u"/1.02u Sn	40u"/1.02u Sn	SEE SHEET 5

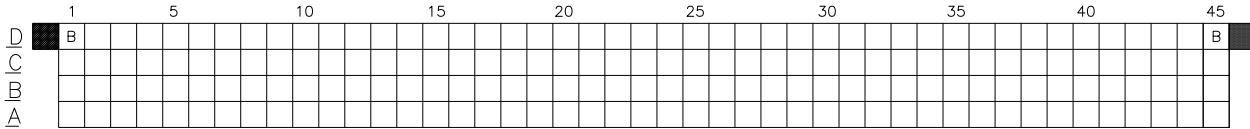


Copyright FCI

mat'l. code		surface ISO 1302 <input checked="" type="checkbox"/> tolerance ISO 406 <input checked="" type="checkbox"/> ISO 1101		projection	product family HPC
lfr	ecn no	dr	date	title	
J				4 ROW VERTICAL HEADER	
tolerances unless otherwise specified				MULTI-PLATED P.F. PINS, 0 G.P.	
angles	linear	.XX ±.01/.3		INCH/MM	
		.XXX ±.005/.13		scale 1:1	
σ±Z		.XXXX ±.0020/.051		dwg no 50760 sheet 3 of 5 size A3	
dr	P. PARSONS	4/12/94		Type Product Customer Drawing	
engr	M JACOB	10/08/14			
chr	ALOSIUS STALIN	10/08/14			
appd	BIJU K PAUL	10/08/14			
sheet index	revision sheet				

PRODUCT NUMBER
50760-XX003
50760-XX003LF

SPECIAL LOAD 50760-XX003 AND 50760-XX003LF SHOWN ON THIS SHEET



PIN  
1

ITEM KEY	SIGNAL DATA			
	SIZE 4 x 45	TOTAL NO. OF POSITIONS -180	NO. OF POSITIONS LOADED - 180	
	PLATING - 30u"/.76u GXT	PRESS FIT STYLE		
	QTY.	MATING LENGTH	TAIL LENGTH	TOTAL PIN LENGTH
A	178	.180 / 4.57	.557 / 14.15	.924 / 23.47
B	2	.210 / 5.33	.587 / 14.91	.984 / 24.99

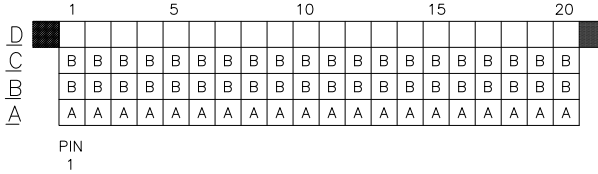
PLATING NOTE: POST-PLATED

- ALL POSITIONS ARE LOADED WITH "A", EXCEPT AS SHOWN.
- COLUMN 1, ROW A IS DESIGNATED AS SIGNAL PIN 1, AS VIEWED FROM THE MATING FACE.

mat'l. code	surface	tolerance	projection	product family
	ISO 1302	ISO 406		HPC
lfr	ecn no	dr	date	tolerances unless otherwise specified
H				angles linear .XX ±.01/.3
				σ±Z .000 ±.0020/.051
				dr P. PARSONS 4/12/94
				enrg J. AFTON 4/11/95
				chr G. PETERS 4/15/94
				appd S. CLARK 4/18/94
sheet index	revision sheet			scale 1:1
				INCH/MM
				title
				4 ROW VERTICAL HEADER
				MULTI-PLATED P.F. PINS, 0 G.P.
				dwg no 50760 sheet 4 of 5 size A3
				Type Product Customer Drawing

PRODUCT NUMBER
50760-XX036
50760-XX036LF

SPECIAL LOAD 50760-XX036 AND 50760-XX036LF SHOWN ON THIS SHEET



ITEM KEY	SIGNAL DATA		
	SIZE 4 x 20	TOTAL NO. OF POSITIONS - 80	NO. OF POSITIONS LOADED - 60
	PLATING - 30u"/.76u	GXT DUPLEX	PRESS FIT STYLE
	QTY.	MATING LENGTH	TAIL LENGTH
A	20	.220 / 5.59	.250 / 6.35
B	40	.180 / 4.57	.250 / 6.35

- ALL BLANK POSITIONS ARE NOT LOADED
- COLUMN 1, ROW A IS DESIGNATED AS SIGNAL PIN 1, AS VIEWED FROM THE MATING FACE.

mat'l. code	surface	tolerance	projection	product family
	ISO 1302	ISO 406		HPC
lfr	ecn no	dr	date	tolerances unless otherwise specified
A				angles linear .XX ±.01/.3
				σ±Z .000 ±.0020/.051
				dr M JACOB 10/08/14
				enrg M JACOB 10/08/14
				chr ALOSUS STALIN 10/08/14
				appd BIJU K PAUL 10/08/14
sheet index	revision sheet			scale 1:1
				INCH/MM
				title
				4 ROW VERTICAL HEADER
				MULTI-PLATED P.F. PINS, 0 G.P.
				dwg no 50760 sheet 5 of 5 size A3
				Type Product Customer Drawing