

Excellent Integrated System Limited

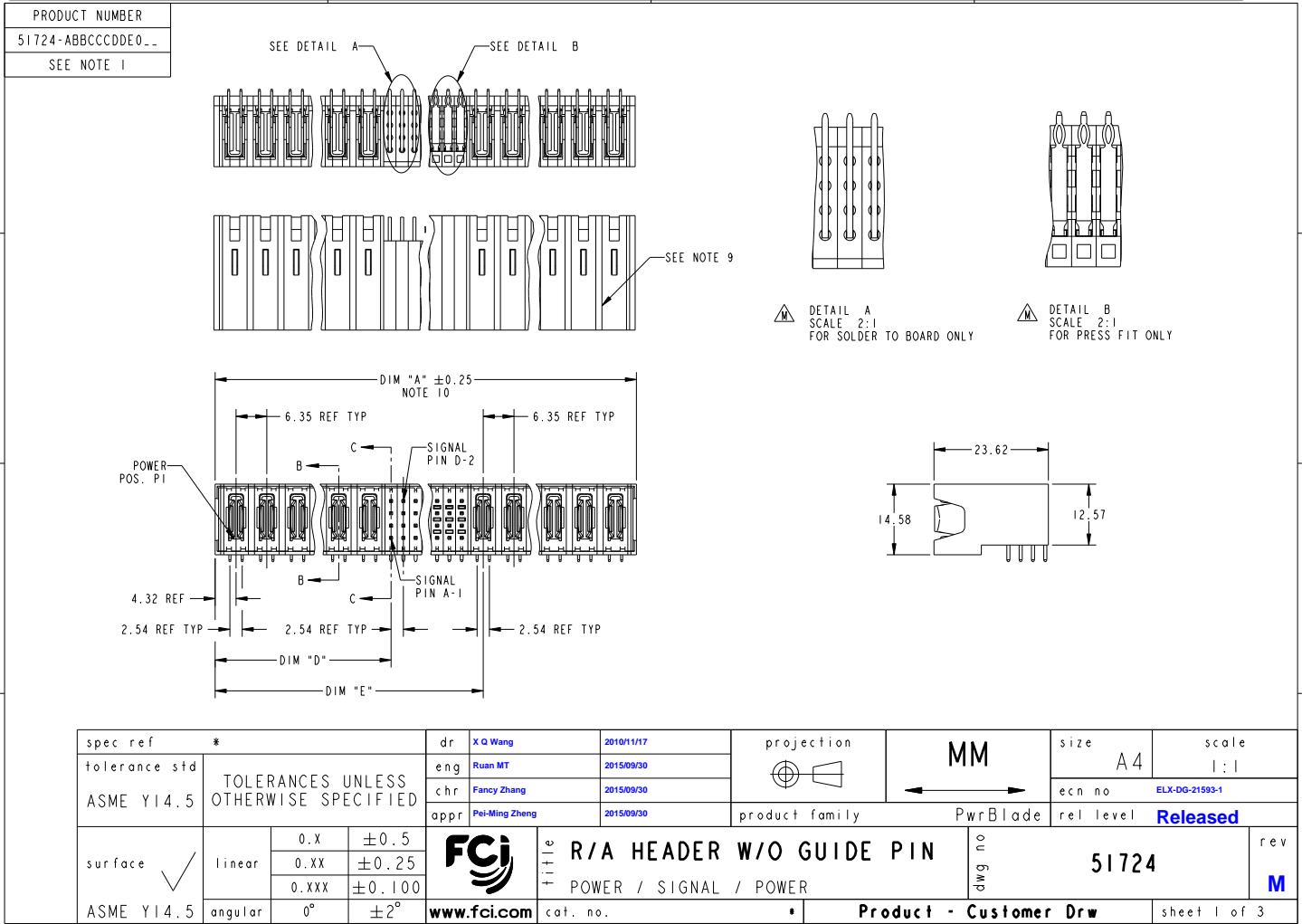
Stocking Distributor

Click to view price, real time Inventory, Delivery & Lifecycle Information:

[FCI](#)
[51724-10301203A0LF](#)

For any questions, you can email us directly:

sales@integrated-circuit.com



Copyright FCI.

FILE F116 - REV C - 2009-08-09

1

2

3

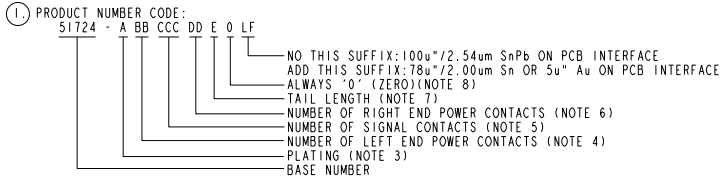
PDS: Rev :M

STATUS:Released

Printed: Oct 09, 2015

PRODUCT NUMBER	DIM	LENGTH FORMULAS (SEE NOTE 10)
51724-ABBCCDDDE0...	DIM "A"	$6.35 \times BB + 2.54 \times (CCC/4) + 6.35 \times DD + 2.29$ (NOTE 10)
SEE NOTE 1	DIM "D"	$6.35 \times BB + 2.41$
	DIM "E"	$6.35 \times BB + 2.54 \times (CCC/4) + 4.32$
	DIM "F"	$6.35 \times BB + 2.54 \times (CCC/4) + 6.35 \times DD + 3.05$
	DIM "G"	$6.35 \times BB - 0.64$
	DIM "H"	$6.35 \times BB + 2.54 \times (CCC/4)$

CONNECTOR NOTES



- ② HOUSING MATERIAL: GLASS FILLED V-O HIGH TEMP THERMO PLASTIC.
SIGNAL CONTACT MATERIAL: COPPER ALLOY
POWER CONTACT MATERIAL: COPPER ALLOY
- ③ PLATING OPTION:
1 = SEE PRINT 10064183 FOR PLATING SPEC OF 51724-1BBCC00E0; 51724-1BBCC00E0LF
- ④ LEFT END POWER CONTACTS, 01 THRU 19 AVAILABLE.
MAXIMUM OF 20 POWER CONTACTS PER CONNECTOR.
- ⑤ SIGNAL CONTACTS, 004 TO 148 AVAILABLE.
- ⑥ RIGHT END POWER CONTACTS, 01 TO 19 AVAILABLE.
MAXIMUM OF 20 POWER CONTACTS PER CONNECTOR.
- ⚠ ⑦ TAIL LENGTH:
A = 3.43 SOLDER TO BOARD
B = 4.19 SOLDER TO BOARD
C = 3.43 PRESS FIT
D = 2.34 SOLDER TO BOARD

- ⑧ BOARD RETENTION IS NOT AVAILABLE WITH GUIDELESS ENDS.
- ⑨ MANUFACTURE'S NAME, P/N, AND DATE CODE TO APPEAR ON THIS SURFACE.
- ⑩ THE MAXIMUM OVERALL LENGTH (DIM A) OF A PART IS 203.2
- 11. PRODUCT SPECIFICATION GS-12-149
APPLICATION SPECIFICATION BUS-20-067
- 12. REFERENCE 51697 FOR SELECT LOAD/FMLB WORKSHEET
- PCB NOTES:
- 13. ALL DIMENSIONS ARE BASIC UNLESS OTHERWISE SPECIFIED.
- ⑭ ALL THROUGH HOLES ARE LOCATED WITH A TRUE POSITION OF 0.10
- 15. ALL HOLE DIAMETERS ARE FINISHED HOLE SIZE.
- ⑯ $\varnothing 1.151 \pm 0.025$ DRILLED HOLES PLATED WITH 0.008 MIN SnPb or Sn OVER 0.03 TO 0.08 Cu PLATING TO ACHIEVE A 1.02 ± 0.07 HOLE.
- 17. A ⚠ SYMBOL WILL BE NEXT TO ANY DIMENSION, VIEW, OR NOTE WHICH HAS BEEN MODIFIED WITH THE CURRENT DRAWING REVISION.
- ⚠ ⑰ CONNECTOR KEEP OUT ZONE

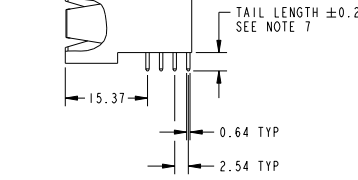
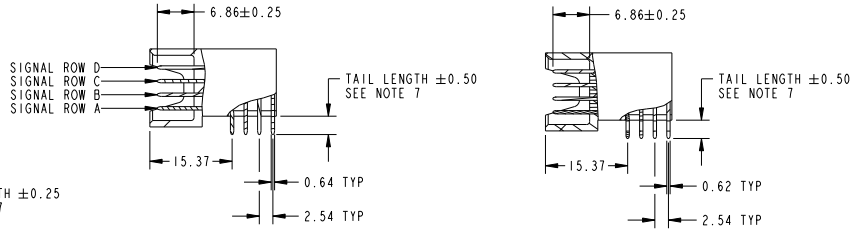


Copyright FCI.

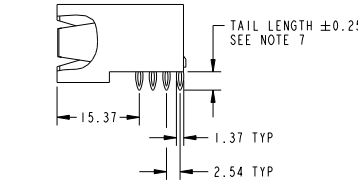
dr	X Q Wang	2010/11/17	projection 	MM	size	A4	scale	1:1
eng	Ruan MT	2015/09/30			ec n no	ELX-DG-21593-1		
chr	Fancy Zhang	2015/09/30			product family	PwrBlade	rel level	Released
appr	Pei-Ming Zheng	2015/09/30			title	R/A HEADER W/O GUIDE PIN	dwg no	51724
www.fci.com		cat. no.	Product - Customer Drw		sheet 2 of 3			

PAVE File - REV C - 2009-06-09

PRODUCT NUMBER
51724-ABBCCCDDE0...
SEE NOTE 1



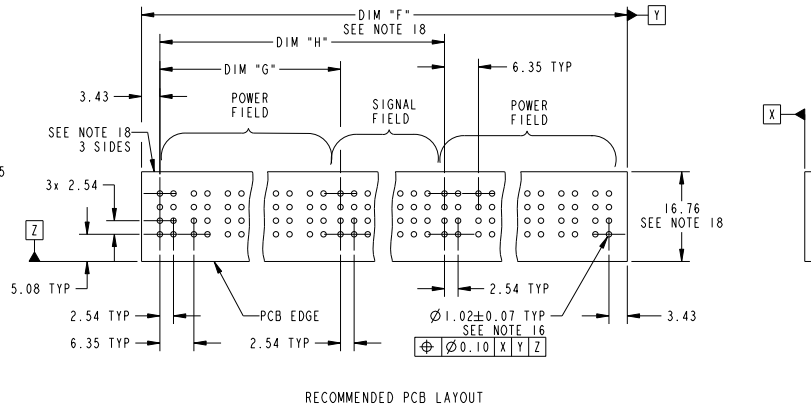
⚠ BROKEN-OUT SECTION B-B FOR SOLDER TO BOARD ONLY



⚠ BROKEN-OUT SECTION B-B FOR PRESS FIT ONLY

⚠ BROKEN-OUT SECTION C-C FOR SOLDER TO BOARD ONLY

⚠ BROKEN-OUT SECTION C-C FOR PRESS FIT ONLY



RECOMMENDED PCB LAYOUT

dr	X Q Wang	2010/11/17	projection	MM	size	A4	scale	1:1
eng	Ruan MT	2015/09/30			ecn no	ELX-DG-21593-1		
chr	Fancy Zhang	2015/09/30	product family	PwrBlade	rel level	Released		
appr	Pei-Ming Zheng	2015/09/30						
R/A HEADER W/O GUIDE PIN POWER / SIGNAL / POWER				cat. no.	Product - Customer Drw	sheet 3 of 3	rev M	

Part File - REV C - 2009-06-09



Copyright FCI.