

## Excellent Integrated System Limited

Stocking Distributor

Click to view price, real time Inventory, Delivery & Lifecycle Information:

[Johanson Technology Inc.](#)  
[2450AT44A100E](#)

For any questions, you can email us directly:

[sales@integrated-circuit.com](mailto:sales@integrated-circuit.com)

# “High Frequency Ceramic Solutions”

## 2.45 GHz Chip Antenna

P/N 2450AT44A100

Detail Specification: 02/19/03

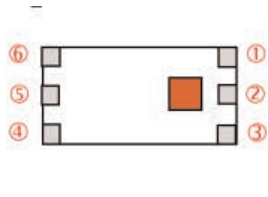
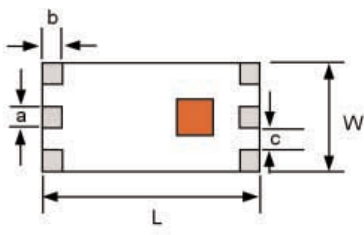
Page 1 of 3

Part Number	Frequency (MHz)	Peak Gain (XZ-V)	Ave. Gain (XZ-V)	Return Loss
2450AT44A100_	2400 - 2500	1.3 dBi typ.	0 dBi typ.	9.5 dB min.

Input Power	Impedance	Operating Temperature Range	Reel Qty
3 Watts max	50 Ω	-40 to +85°C	1000

### Mechanical Dimensions

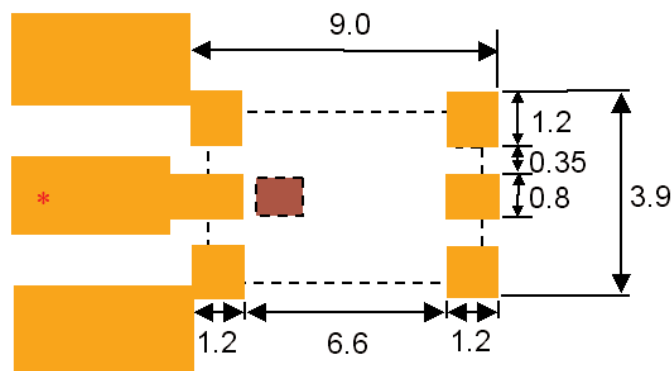
	L	W	T	a	b	c
Inches	0.299 ± .012	0.138 ± .008	0.051 ± .004	0.028 ± .008	0.020 ± .012	0.028 ± .008
mm	7.6 ± 0.3	3.5 ± 0.2	1.3 ± 0.1	0.7 ± 0.2	0.5 ± 0.3	0.7 ± 0.2



No.	Terminal Name	No.	Terminal Name
①	GND	④	NC
②	Feed Point	⑤	NC
③	GND	⑥	NC

### Mounting Considerations

Mount these devices with brown colored side facing up.  
 Line width should be designed to provide 50Ω impedance matching characteristics.  
 Units: mm



Johanson Technology, Inc. reserves the right to make design changes without notice.  
 All sales are subject to Johanson Technology, Inc. terms and conditions.

# “High Frequency Ceramic Solutions”

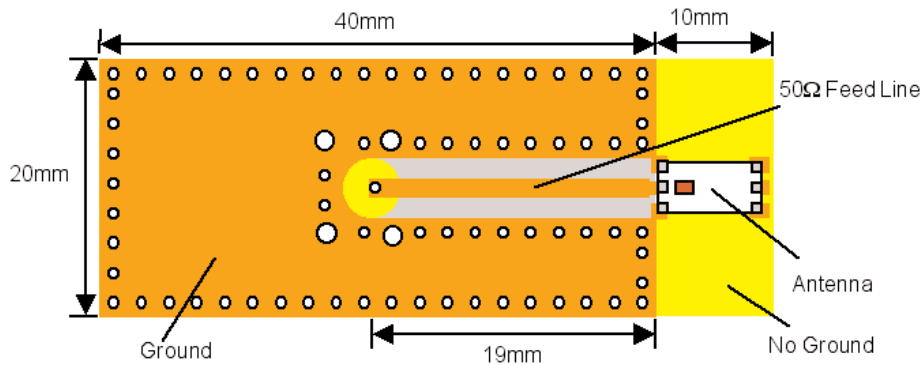
## 2.45 GHz Chip Antenna

Detail Specification: 02/19/03

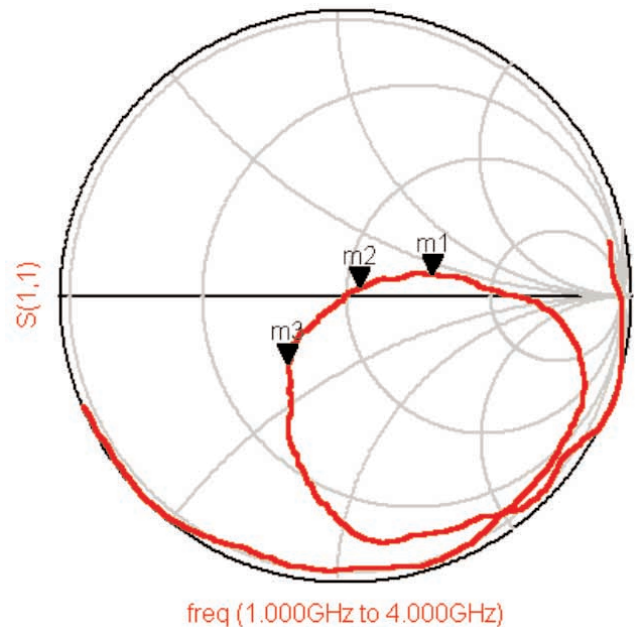
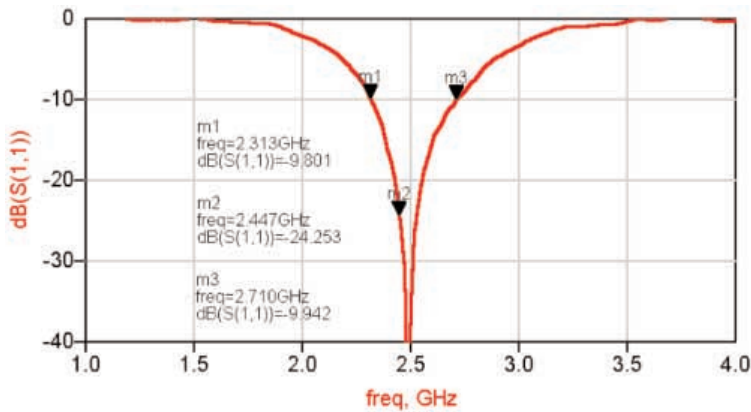
P/N 2450AT44A100

Page 2 of 3

### Test Board for Electrical Characteristic Measurements



### Typical Return Loss for P/N 2450AT44A100



# “High Frequency Ceramic Solutions”

## 2.45 GHz Chip Antenna

P/N 2450AT44A100

Detail Specification: 02/19/03

Page 3 of 3

Typical Radiation Patterns for P/N 2450AT44A100

