

Excellent Integrated System Limited

Stocking Distributor

Click to view price, real time Inventory, Delivery & Lifecycle Information:

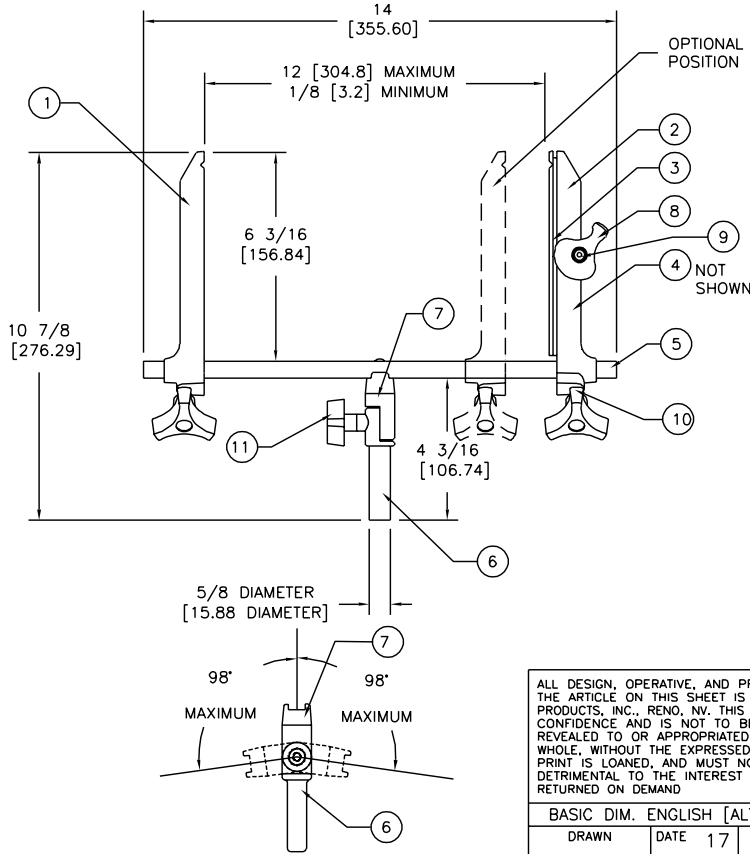
[PanaVise](#)
[315](#)

For any questions, you can email us directly:

sales@integrated-circuit.com

ALL DIMENSIONS ARE
FOR REFERENCE ONLY
DIMENSIONS ARE IN INCHES [MILLIMETERS]
UNLESS OTHERWISE NOTED

PRODUCT SPECIFICATION SHEET			DWG NO	315 SP	
REVISIONS			TITLE		
REV	ECO	DESCRIPTION	BY/DATE	APPROVED	
A		INITIAL RELEASE	IB 28 NOV 95		
B		ADDED VIEW TO SHOW PIVOT OF BAR CONNECTOR	IB 17 JUL 96		
C	1027	REDESIGNED ARMS, DISCONTINUED 318-12, 16, 20, 24, 28	IB 16 JUL 98		



SPECIFICATIONS

OVERALL HEIGHT 10 7/8 [274.7]
WIDTH..... 14 [355.6]
SHIPPING WEIGHT 1.28 POUNDS [.58 KG]
COLOR BURNISHED ALUMINUM
VISE OPENING 12 [304.8] MAXIMUM
1/8 [3.2] MINIMUM

MATERIAL:

- 1. RIGID ARM 380 ALUMINUM DIE CASTING
 - 2. TENSION ARM 380 ALUMINUM DIE CASTING
 - 3. TENSION INSERT 380 ALUMINUM DIE CASTING
 - 4. TENSION SPRING ... PV#BSS032-125 SPRING STEEL
 - 5. CROSS BAR. 1/2 [12.7] SQ STEEL TUBE
BLACK OXIDE
 - 6. MOUNTING STEM .. 380 ALUMINUM DIE CASTING
 - 7. BAR CONNECTOR . 380 ALUMINUM DIE CASTING
 - 8. POSITION CAM 380 ALUMINUM
 - 9. SCREW STEEL 10-32 X 5/8
BLACK OXIDE
 - 10. KNOB K1420-50S3 (2 EA.) BLACK PLASTIC
 - 11. KNOB K1420-13 (1 EA.) BLACK PLASTIC
- ACCESSORY CROSS BARS AVAILABLE
- 1. 318-14 ... 14 [355.6]
 - 2. 318-18 ... 18 [457.2]
 - 3. 318-22 ... 22 [558.8]
 - 4. 318-26 ... 26 [660.4]
 - 5. 318-30 ... 30 [762.0]

ALL DESIGN, OPERATIVE, AND PROCESS DATA PERTAINING TO THE ARTICLE ON THIS SHEET IS THE PROPERTY OF PANAVISE PRODUCTS, INC., RENO, NV. THIS INFORMATION IS DISCLOSED IN CONFIDENCE AND IS NOT TO BE COPIED, REPRODUCED, OR REVEALED TO OR APPROPRIATED BY OTHERS, IN PART OR IN WHOLE, WITHOUT THE EXPRESSED CONSENT OF PANAVISE. THIS PRINT IS LOANED, AND MUST NOT BE USED IN ANY MANNER DETRIMENTAL TO THE INTEREST OF PANAVISE, AND MUST BE RETURNED ON DEMAND



PANAVISE®

7540 Colbert Drive, Reno, Nevada 89511-1225
Phone (702) 850-2900, Fax (702) 850-2929

TITLE
**315 CIRCUIT BOARD
HOLDER**

BASIC DIM. ENGLISH [ALTERNATE DIM. METRIC]

DRAWN	DATE	SCALE	SIZE	DWG. NO.	REV
I BENNETT	17 JUL 96	NONE	A	315 SP	C

SIZE	DWG. NO.	REV
A	315 SP	C