

Excellent Integrated System Limited

Stocking Distributor

Click to view price, real time Inventory, Delivery & Lifecycle Information:

[TE Connectivity AMP Connectors](#)
[552631-1](#)

For any questions, you can email us directly:

sales@integrated-circuit.com

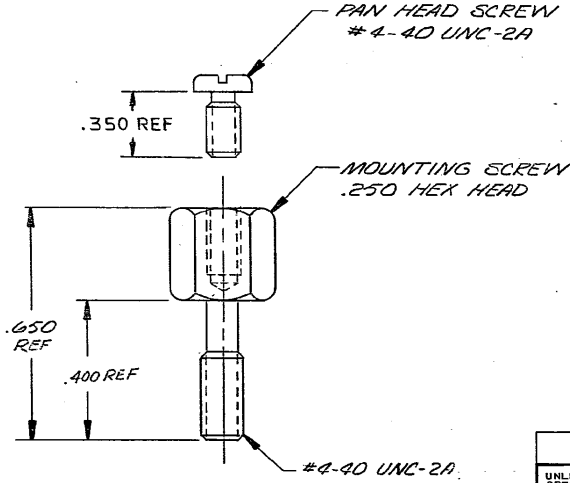


© COPYRIGHT 1977 BY AMP INCORPORATED, HARRISBURG, PA.
 ALL INTERNATIONAL RIGHTS RESERVED. AMP INCORPORATED PRODUCTS
 COVERED BY U. S. AND FOREIGN PATENTS AND/OR PATENTS PENDING.

UNPUBLISHED COPY.
 REPRODUCED FOR THE
 PURPOSE OF THIS DRAWING
 BY AMP INCORPORATED.

REVISIONS						
P	F	ZONE	LTR	DESCRIPTION	DATE	APPROVED
C				REV PER AA-3022	8/29/86	VS

⚠ MATERIAL: PAN HEAD SCREW - ZINC PLATED STEEL
 MOUNTING SCREW - ZINC PLATE WITH
 YELLOW CHROMATE OVER STEEL.



UNLESS OTHERWISE SPECIFIED DIMENSIONS ARE IN INCHES. TOLERANCES ON: DECIMALS ±.005 ANGLES ±.5°		CONTRACT NO		AMP INCORPORATED Harrisburg, Pa.	
DR <i>Steve S. Orl</i> 2-7-77		CHK <i>[Signature]</i> 2-8-77		NAME KIT, HDW, BACK PNL MTG SCR LOCK CHAMP	
MATERIAL ⚠		APPRO APPD <i>C.F. Morgan</i> 2/23/83		SIZE B	
FINISH ⚠		DSGN APPD		CODE IDENT NO 00779	
		OTHER APPD		NUMBER 552631	
				SCALE NTS	
				SHEET 1 OF 1	

AMP 1470-15 (1-73)

CUSTOMER DRAWING