



Distributor of On-Shore Technology, Inc.: Excellent Integrated System Limited
Datasheet of OSTYK41202030 - Connector Barrier Block Strip 2 Circuit 0.325" (8.26mm)

Contact us: sales@integrated-circuit.com Website: www.integrated-circuit.com

Excellent Integrated System Limited

Stocking Distributor

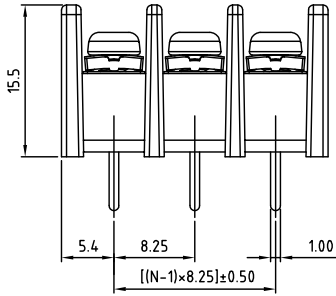
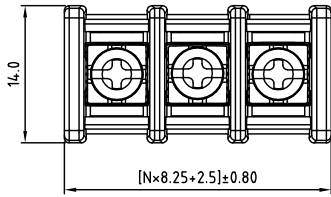
Click to view price, real time Inventory, Delivery & Lifecycle Information:

[On-Shore Technology, Inc.](#)
[OSTYK41202030](#)

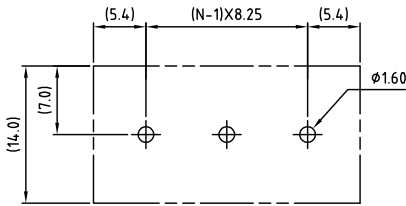
For any questions, you can email us directly:

sales@integrated-circuit.com

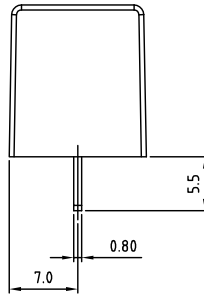
| | | | |
|--|------|-------------|----------|
| SIGN | DATE | DESCRIPTION | APPROVER |
| THIS IS CAD DRAWING, DO NOT REVISE MANUALLY!!! | | | |



N=Number of contacts



P.C.B LAYOUT



SPECIFICATIONS

VOLTAGE & CURRENT: 300V, 20A
 WITHSTANDING VOLTAGE: AC 2000 V/Min
 INSULATION RESISTANCE: 1000 MΩ OR MORE AT DC 500 V
 TEMPERATURE RANGE: -40 °C ~ +105 °C
 SCREW TORQUE VALUE: 8.8 Lb-in.
 WIRE RANGE: 22 - 12 AWG
 1) MOLDED PARTS: POLYIMIDE 66, UL 94 V-0 BLACK
 2) TERMINAL: BRASS, 0.8t, Tin PLATED
 3) TERMINAL SCREWS: STEEL, Ni PLATED, M3
 APPROVAL: US

RoHS Compliant

PART NUMBER:

OSTYK412XX030

No. of Poles
 02: 2 Poles
 03: 3 Poles
 04: 4 Poles
 :
 30: 30 Poles

THESE DRAWINGS AND SPECIFICATIONS ARE THE PROPERTY OF ON-SHORE TECHNOLOGY, INC. AND SHALL NOT BE REPRODUCED, COPIED OR USED IN ANY MANNER WITHOUT THE PRIOR WRITTEN CONSENT OF ON-SHORE TECHNOLOGY, INC.

| | | | | | |
|-----------------------|----------------------|--------------------|--------------------|-----------------------------|--|
| | | TITLE | | OSTYK-412 w/o Flange Series | |
| | | PART NO. | OSTYK412XX030 | DWG NO. | OSTYK412XX030.DWG |
| APPROVED | CHECKED | DESIGNED | DRAWN | CUST NO. | Tolerance |
| Shi Jun 2006.11.07 | Seamus 2006.11.06 | Tony 2006.02.06 | Tony 2006.02.06 | | X: ±0.50 X.X: ±0.30 X.XX: ±0.10 X*: ±1° |
| | | | | SHEET: 01/01 | REV: C |