

## **Excellent Integrated System Limited**

Stocking Distributor

Click to view price, real time Inventory, Delivery & Lifecycle Information:

[Pulse Electronics Corporation](#)

[JG0-0051NL](#)

For any questions, you can email us directly:

[sales@integrated-circuit.com](mailto:sales@integrated-circuit.com)

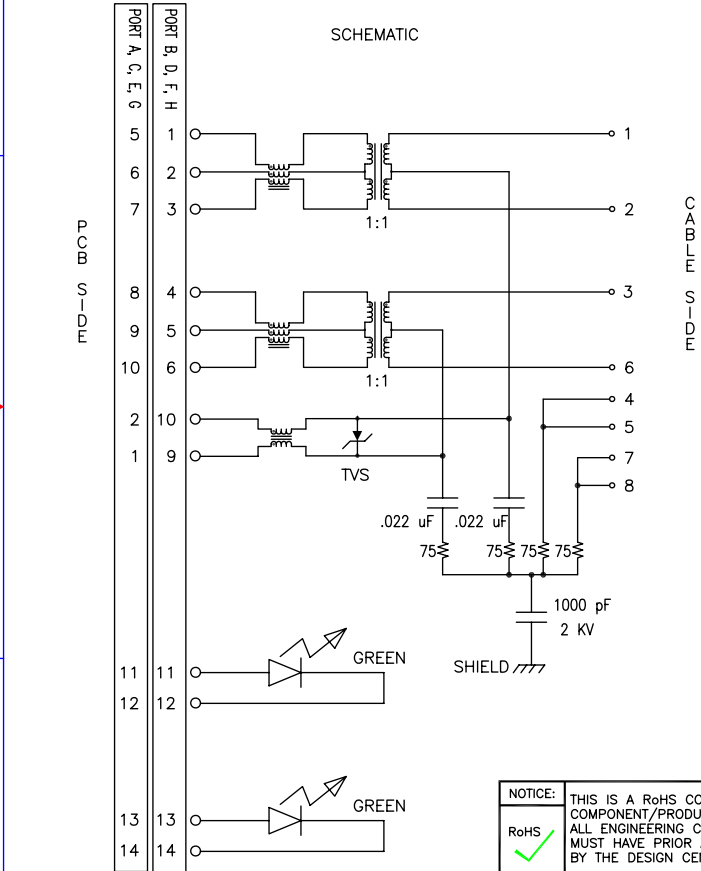
JG0-0051NL  
 NOTICE: THE INFORMATION AND DESIGN CONTAINED HEREIN IS THE PROPERTY OF PULSE WHO RESERVES ALL RIGHTS THERETO.

ELECTRICAL CHARACTERISTICS AT +25°C UNLESS OTHER SPECIFIED (FOR REFERENCE ONLY. USED FOR CUSTOMER INFORMATION.)

PARAMETER	SPECIFICATIONS		
	100 KHz	1-125 MHz	
INSERTION LOSS	-1.2 dB MAX	-0.2-0.002*f <sup>1.4</sup> dB MAX	
RETURN LOSS (Z <sub>out</sub> = 100 OHM ±25%)	.1-30 MHz	30-60 MHz	60-80 MHz
	-16 dB MIN	-10+20*LOG <sub>10</sub> (f/60 MHz) dB MIN	-10 dB MIN
INDUCTANCE (OCL) (MEDIA SIDE, 0°C-70°C)	350 uH MIN (MEASURED AT 100 KHz, 100 mVRMS AND WITH 8 mA DC BIAS)		
CROSSTALK, ADJACENT CHANNELS	1 MHz	10-100 MHz	
	-50 dB MIN	-55+22*LOG <sub>10</sub> (f/10) dB MIN	
COMMON MODE REJECTION RATIO	2 MHz	30-200 MHz	
	-50 dB MIN	-15+20*LOG <sub>10</sub> (f/200) dB MIN	
INPUT - OUTPUT ISOLATION	1500 VRMS MIN @ 60 SECONDS		

NOTE: f IS FREQUENCY IN MHZ.

EMMITTED COLOR	GREEN
WAVELENGTH (nm)	565 nM
BRIGHTNESS (mCD)	8 TO 12 TYP. @ 20mA
VIEWING ANGLE	100°
POWER DISSIPATION (Pd)	68 mW MAX
DC FORWARD CURRENT	25 mA MAX
REVERSE VOLTAGE (Vr)	5.0 V MAX



NOTICE: THIS IS A RoHS COMPLIANT COMPONENT/PRODUCT. ALL ENGINEERING CHANGES MUST HAVE PRIOR APPROVAL BY THE DESIGN CENTER.

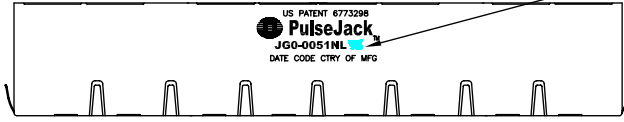
UNLESS OTHERWISE SPECIFIED, ALL DIMENSIONS ARE IN INCHES TOLERANCES ARE:

DECIMALS	ANGLES	SIZE	DWG. NO.	REV.
.XX ±.01 ±.1°		B01961	JG0-0051NL	X1
.XXX ±.005		SCALE NONE	JG0-0051NL-1	SHEET 1 OF 4

DO NOT SCALE DRAWING

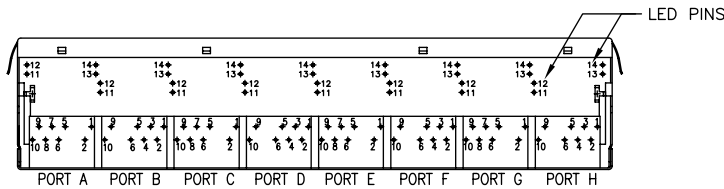
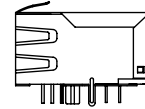
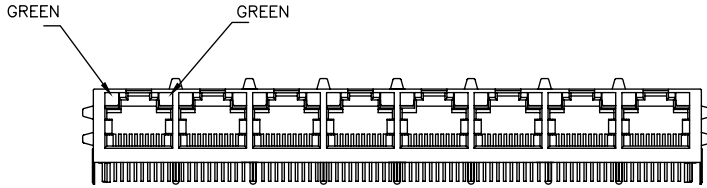
JG0-0051NL  
**NOTICE: THE INFORMATION AND DESIGN CONTAINED HEREIN IS THE PROPERTY OF PULSE WHO RESERVES ALL RIGHTS THERETO.**

FINAL OUTLINE NOTE:  
 CHECK DIMENSIONS PER PACKAGE SPECIFICATION ITEM 15.



FINAL OUTLINE

MARK PART WITH "UL MARK"  
 PER PROCEDURE ITEM 22.  
 MARK POSITION IS OPTIONAL  
 PREFERRED LOCATION IS  
 TOP OF THE PART.



PIN ASSIGNMENT  
 (BOTTOM VIEW)

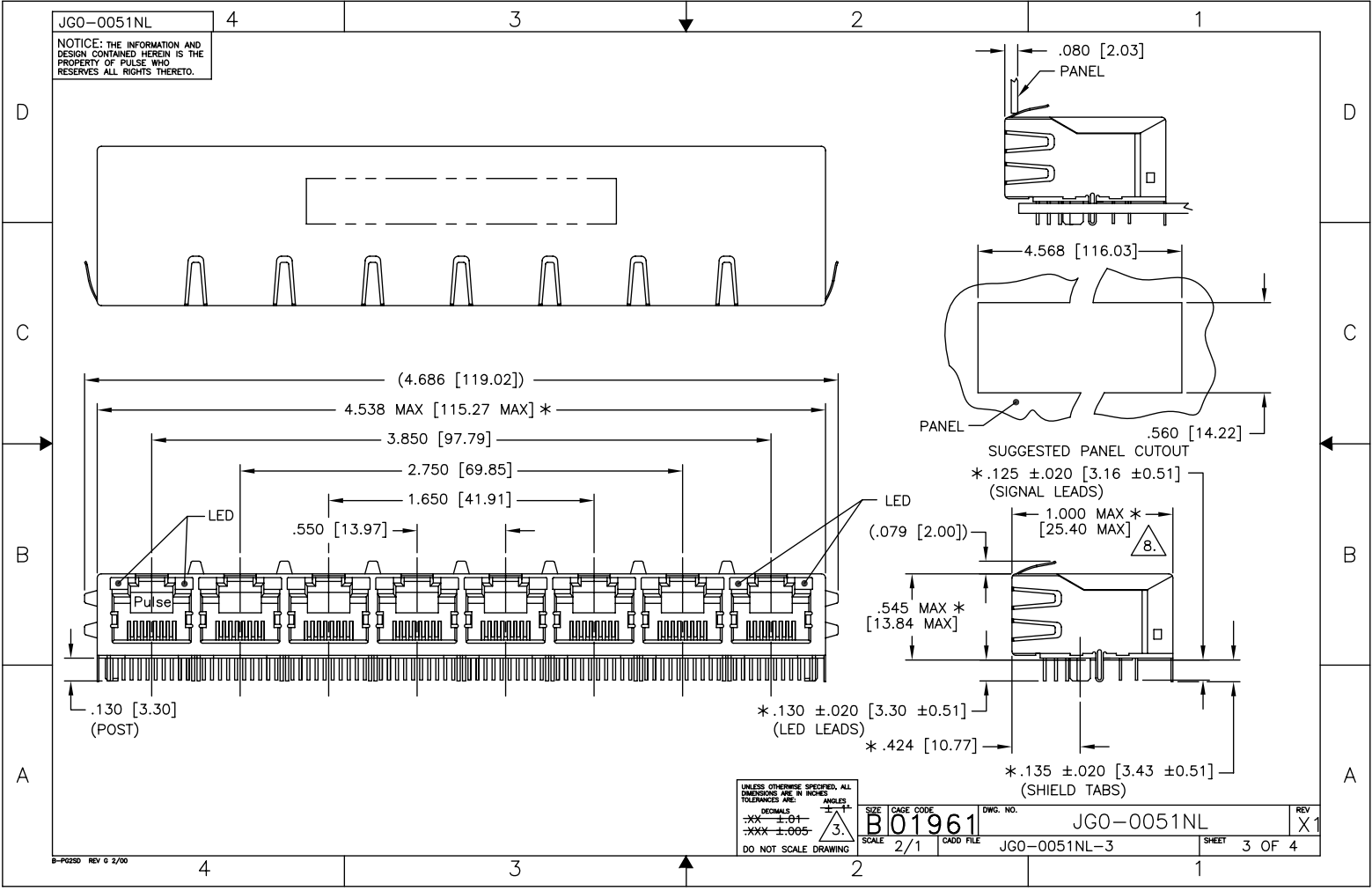
NOTES:  
 FOR PORT A, C, E AND G: PINS 3 AND 4 ARE REMOVED.  
 FOR PORT B, D, F AND H: PINS 7 AND 8 ARE REMOVED.

UNLESS OTHERWISE SPECIFIED, ALL DIMENSIONS ARE IN INCHES TOLERANCES ARE:  
 DECIMALS ANGLES  
 .XX ±.01 ± 1°  
 .XXX ±.005  
**DO NOT SCALE DRAWING**

SIZE	DATE CODE	DWG. NO.	REV.
B	01961	JG0-0051NL	X1
SCALE	NONE	ORD. FILE	JG0-0051NL-2
		SHEET	2 OF 4

120072004

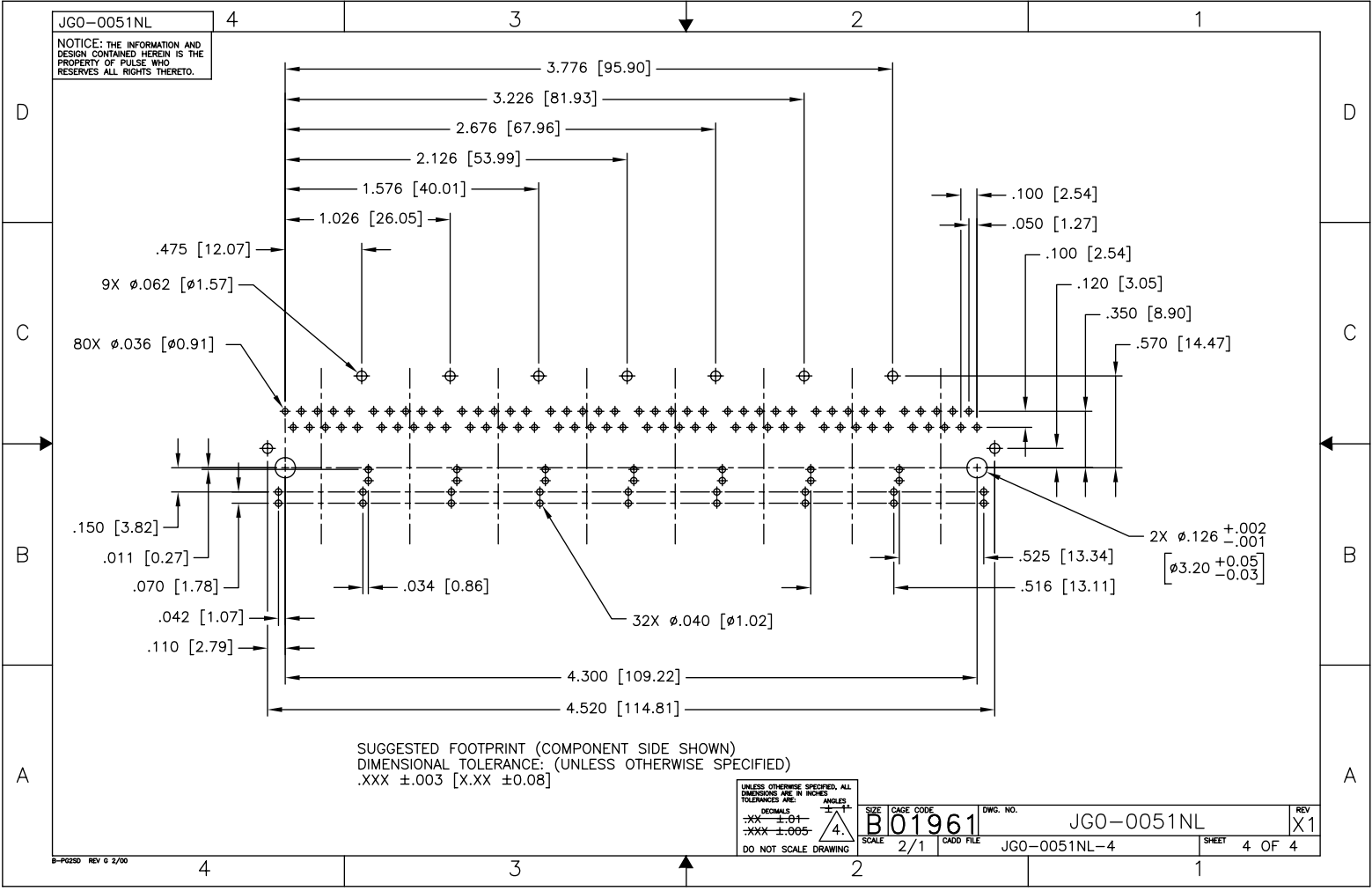
JG0-0051NL  
NOTICE: THE INFORMATION AND DESIGN CONTAINED HEREIN IS THE PROPERTY OF PULSE WHO RESERVES ALL RIGHTS THERETO.



UNLESS OTHERWISE SPECIFIED, ALL DIMENSIONS ARE IN INCHES. TOLERANCES ARE:		SIZE	CAGE CODE	DWG. NO.	REV
DECIMALS	±.01	B	B01961	JG0-0051NL	X1
ANGLES	±.005	SCALE	CADD FILE	JG0-0051NL-3	SHEET
DO NOT SCALE DRAWING		2/1			3 OF 4

B-P0250 REV C 2/00

JG0-0051NL  
NOTICE: THE INFORMATION AND DESIGN CONTAINED HEREIN IS THE PROPERTY OF PULSE WHO RESERVES ALL RIGHTS THERETO.



SUGGESTED FOOTPRINT (COMPONENT SIDE SHOWN)  
DIMENSIONAL TOLERANCE: (UNLESS OTHERWISE SPECIFIED)  
.XXX ±.003 [X.XX ±0.08]

UNLESS OTHERWISE SPECIFIED, ALL DIMENSIONS ARE IN INCHES. TOLERANCES ARE:		SIZE	CAGE CODE	DWG. NO.	REV
DECIMALS	ANGLES	B	01961	JG0-0051NL	X1
-.XX ±.01	±	SCALE	2/1	CADD FILE	JG0-0051NL-4
-.XXX ±.005	4.			SHEET	4 OF 4
DO NOT SCALE DRAWING					