

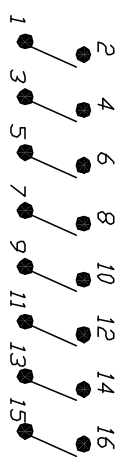
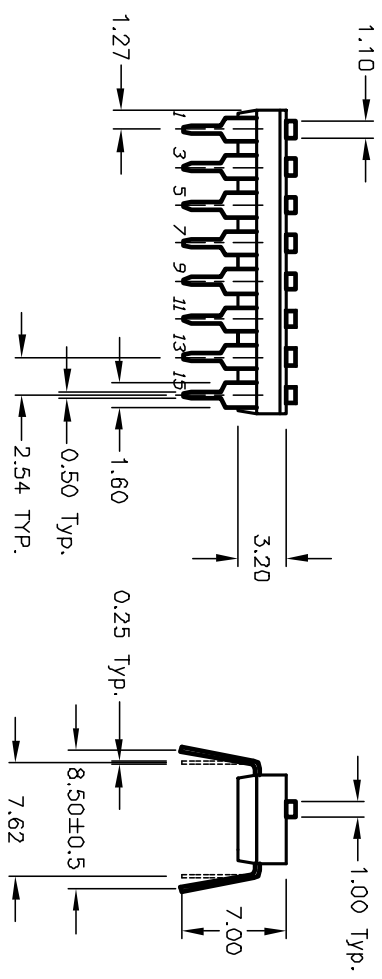
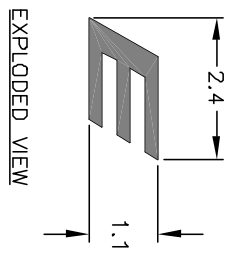
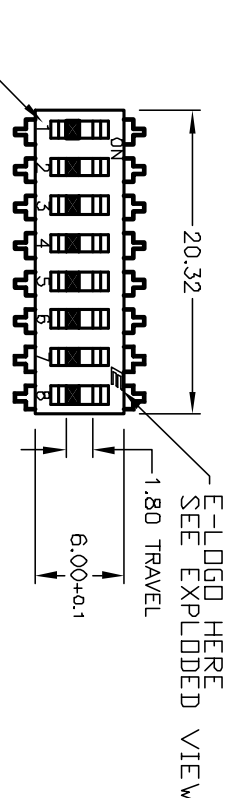
## Excellent Integrated System Limited

Stocking Distributor

Click to view price, real time Inventory, Delivery & Lifecycle Information:

[E-Switch](#)  
[KAJ08LAGT](#)

For any questions, you can email us directly:  
[sales@integrated-circuit.com](mailto:sales@integrated-circuit.com)

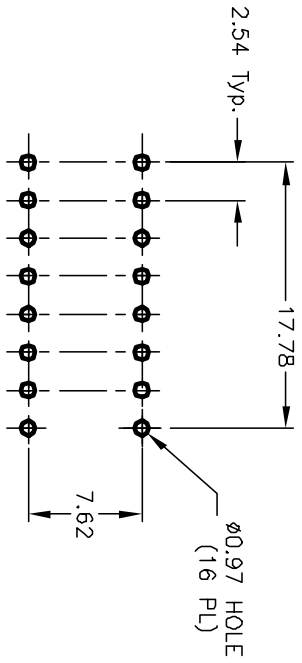


CIRCUIT 8 POS.

NOTES:

1. ALL DIMENSIONS IN MM
2. GENERAL TOLERANCE: X.X=±0.4  
X.XX=±0.25
3. TERM. NOS. FOR REFERENCE ONLY.
4. CONTACT RATINGS: 25mA @24VDC. (Switch)  
100mA @50VDC. (Carry)
5. CONTACT MATERIAL:  
CONTACTS: (MOVABLE) Copper w/Gold Plate  
TERMINALS: BRASS w/Gold Plate
6. INSULATION RESISTANCE:  
100 Mega-OHMS min. @500VDC
7. CONTACT RESISTANCE:  
50 MILLI-OHMS typical @2-4VDC @100mA
8. OPERATING TEMP.:  
-40°C to +80°C
9. PACKAGE: IN DISPENSING TUBES  
WITH ALL POLES IN THE "OFF" POSITION.

RECOMMENDED P.C.B. LAYOUT



|      |         |                         |         |      |
|------|---------|-------------------------|---------|------|
| B    | 12293   | REVISED E-LOGD          | 7/11/02 | CJB  |
| A    | 12227   | RELEASED FOR PRODUCTION | 6/14/02 | CJB  |
| REV. | ECN No. | DESCRIPTION             | DATE    | CHKD |

|             |  |       |  |         |     |         |     |
|-------------|--|-------|--|---------|-----|---------|-----|
| TITLE       |  | SCALE |  | DATE    | DR  | DWG     | REV |
| KAJ08 LA GT |  | 2:1   |  | 6/14/02 | CJB | W823128 | B   |

**E-SWITCH®**

THE INFORMATION CONTAINED IN THIS DOCUMENT IS PROPRIETARY TO E-SWITCH AND IS NOT TO BE COPIED OR TRANSMITTED