

Excellent Integrated System Limited

Stocking Distributor

Click to view price, real time Inventory, Delivery & Lifecycle Information:

[TE Connectivity AMP Connectors](#)
[1643902-1](#)

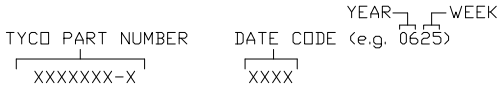
For any questions, you can email us directly:

sales@integrated-circuit.com

THIS DRAWING IS UNPUBLISHED. RELEASED FOR PUBLICATION
 © COPYRIGHT BY TYCO ELECTRONICS CORPORATION. ALL RIGHTS RESERVED.

LOC	DIST	REVISIONS			
P	LTR	DESCRIPTION	DATE	DWN	APVD
GP	00	B	REV PER ECO-07-007230	29MAR07	RG SF

6. MINIMUM 5oz. Cu RECOMMENDED FOR USE WITH PC BOARD.
 5. ITEMS PROVIDED TO THIS SPECIFICATION TO BE PERMANENTLY IDENTIFIED PER THE FOLLOWING IDENTIFIER:

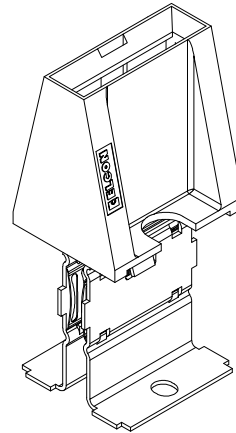


4. ALL DIMENSIONS SHOWN ACROSS A CENTERLINE (⊥) SHALL BE CENTRALIZED WITHIN THE TOLERANCE INDICATED FOR THAT DIMENSION.

3. FINISHES:
 CROWN HOLDER: GOLD PLATED, .000030 MIN THICK WITH OVERALL GOLD FLASH OVER NICKEL PLATED, .000040 MIN THICK

2. MATERIALS:
 INSULATOR: THERMOPLASTIC, GLASS REINFORCED, UL94V-0 FLAMMABILITY RATED, COLOR-BLACK
 CROWN HOLDER: COPPER ALLOY
 CROWN BAND: COPPER ALLOY
 MATING BLADE: COPPER ALLOY WITH GOLD OR NICKEL PLATED

1. PART NUMBER CHANGES AND OR DESIGN CHANGES AFFECTING ITEM INTERCHANGEABILITY REQUIRE PRIOR ELCON APPROVAL AND AUTHORIZATION BY REVISION TO THIS DRAWING.



BEFORE ASSEMBLED

AS SHOWN	1643902-1
DESCRIPTION	PART NUMBER

THIS DRAWING IS A CONTROLLED DOCUMENT.		DWN HA/GRZYBOWSKI	02/25/06	tyco Electronics	Tyco Electronics Corporation Harrisburg, PA 17105-3608	
DIMENSIONS: INCHES		CHK -	-		CONNECTOR, CROWN CLIP DOUBLE POLE, FEED THRU	
TOLERANCES UNLESS OTHERWISE SPECIFIED:		APVD CHAU/FLICKINGER	02/25/06	NAME	-	
0 PLC ± -		PRODUCT SPEC	-	APPLICATION SPEC	SIZE	CAGE CODE
1 PLC ± -					A3	00779
2 PLC ± .02 [.3]				DRAWING NO	C=1643902	
3 PLC ± .010 [0.25]				RESTRICTED TO	-	
4 PLC ± -				SCALE	2:1	
ANGLES ± .5				SHEET	1 of 3	
MATERIAL	FINISH	WEIGHT	-	CUSTOMER DRAWING	REV	B

THIS DRAWING IS UNPUBLISHED.

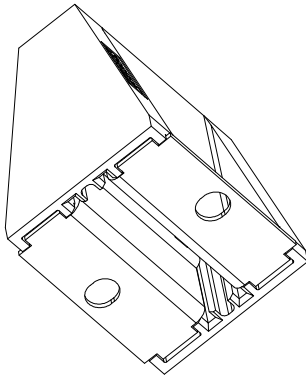
RELEASED FOR PUBLICATION

ALL RIGHTS RESERVED.

LOC GP
DIST 00

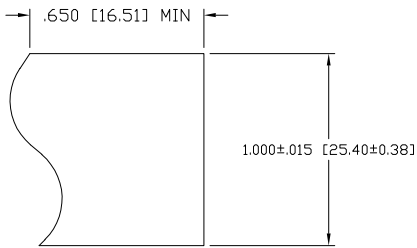
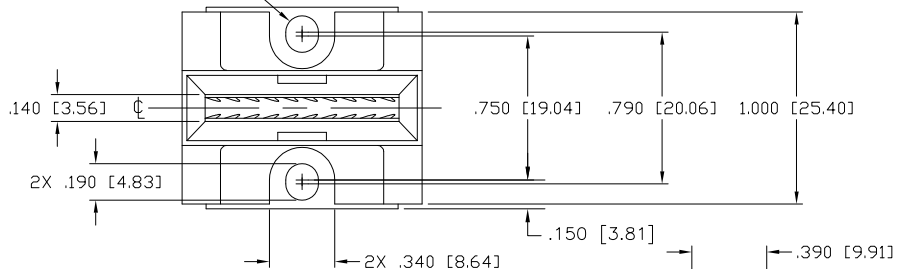
REVISIONS

P	LTR	DESCRIPTION	DATE	DWN	APVD
-	-	SEE SHEET 1	-	-	-

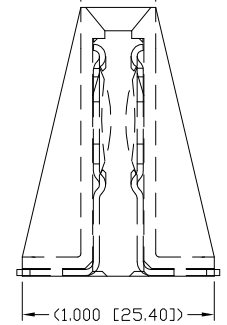
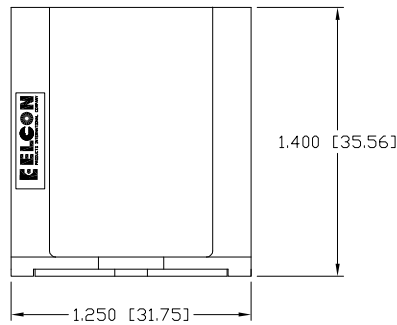


FEED-THRU VIEW

4X R.085 [R2.16]
(CLEARANCE SLOT
FOR #8 OR M4 SCREW)



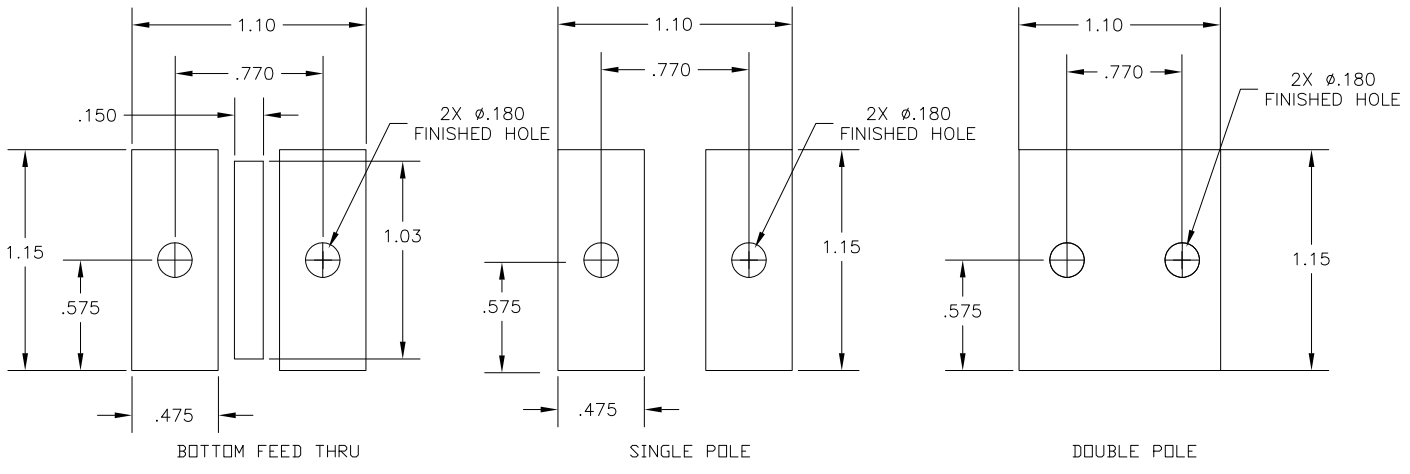
RECOMMENDED MATING BLADE



THIS DRAWING IS A CONTROLLED DOCUMENT.		DWN HA/GRZYBOWSKI CHK -	02/25/06	tyco Electronics		Tyco Electronics Corporation Harrisburg, PA 17105-3608	
DIMENSIONS: INCHES		TOLERANCES UNLESS OTHERWISE SPECIFIED:		APVD CHAU/FLICKINGER PRODUCT SPEC	NAME CONNECTOR, CROWN CLIP DOUBLE POLE, FEED THRU		
0 PLC ± -		1 PLC ± -		APPLICATION SPEC		SIZE CAGE CODE DRAWING NO	
2 PLC ± .02 [.3]		3 PLC ± .010 [0.25]		-		A3 00779 C=1643902	
4 PLC ± -		ANGLES ± .5		WEIGHT		RESTRICTED TO	
MATERIAL		FINISH		CUSTOMER DRAWING		SCALE SHEET REV	
-		-		-		2:1 2 of 3 B	

THIS DRAWING IS UNPUBLISHED. RELEASED FOR PUBLICATION
 © COPYRIGHT BY TYCO ELECTRONICS CORPORATION. ALL RIGHTS RESERVED.

LOC	DIST	REVISIONS					
GP	00	P	LTR	DESCRIPTION	DATE	DWN	APVD
		-		SEE SHEET 1	-	-	-



RECOMMENDED PCB PAD LAYOUT

THIS DRAWING IS A CONTROLLED DOCUMENT.		DWN HA/GRZYBOWSKI	02/25/06		Tyco Electronics Corporation Harrisburg, PA 17105-3608	
DIMENSIONS: INCHES		CHK -	-		APVD CHAU/FLICKINGER	02/25/06
TOLERANCES UNLESS OTHERWISE SPECIFIED:		0 PLC ± -		PRODUCT SPEC		
1 PLC ± -		2 PLC ± .02 [.3]		APPLICATION SPEC		
3 PLC ± .010 [0.25]		4 PLC ± -		SIZE		
ANGLES ± .5		FINISH		CAGE CODE		
MATERIAL		-		DRAWING NO		
-		-		A3 00779 C=1643902		
-		-		WEIGHT		
-		-		CUSTOMER DRAWING		
-		-		SCALE		
-		-		2:1		
-		-		SHEET		
-		-		3 of 3		
-		-		REV		
-		-		B		