

Excellent Integrated System Limited

Stocking Distributor

Click to view price, real time Inventory, Delivery & Lifecycle Information:

[TE Connectivity AMP Connectors](#)
[414338-1](#)

For any questions, you can email us directly:

sales@integrated-circuit.com

4

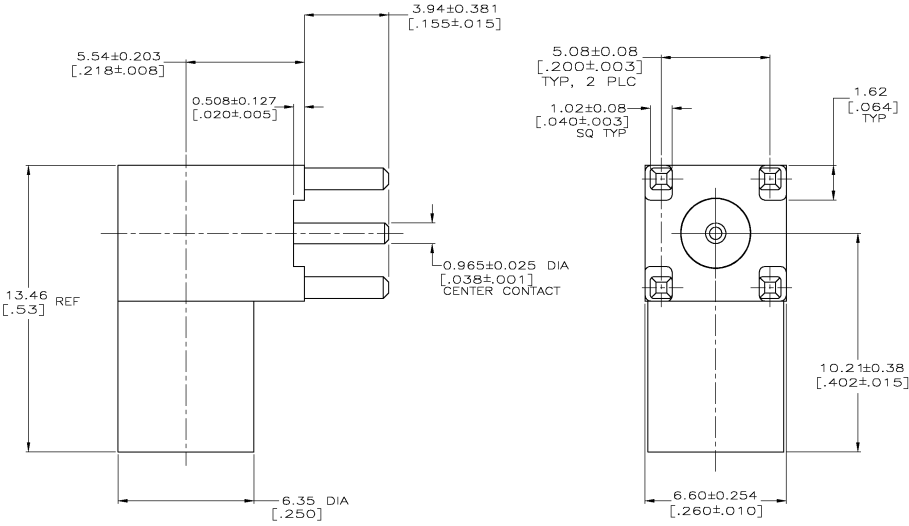
3

2

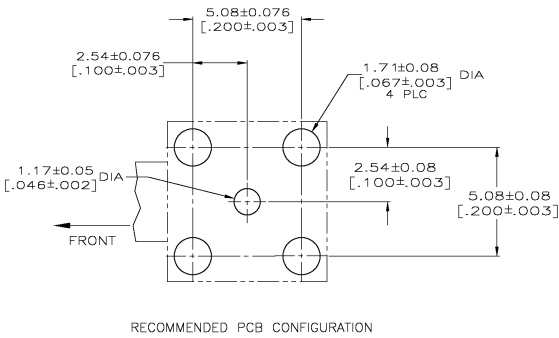
1

THIS DRAWING IS UNPUBLISHED.
 RELEASED FOR PUBLICATION
 BY TTYC ELECTRONICS CORPORATION. ALL RIGHTS RESERVED.

LOC	DISP	REVISIONS			
TP	LTN	DESCRIPTION	DATE	BY	APPD
AJ	16	E	PER EC 0514-01B0-04	06OCT2004	JGH/JGH



1. MATERIALS:
 BODY (LEG): ZINC ALLOY (ZAMAK 3)
 BODY (FRONT): BRASS PER QQ-B-626
 CENTER CONTACT: BRASS PER QQ-B-626
 INSULATORS: TEFLON PER ASTM-D-1710
 END CAP: BRASS PER QQ-B-626
2. FINISH:
 CENTER CONTACT: GOLD PLATE PER MIL-G-45204
 BODY (LEG): TIN PLATE PER ASTM-B-545
 BODY (FRONT): ELECTROLESS NICKEL
 PL PER MIL-C-26074
 END CAP: NICKEL PLATE PER QQ-N-290
3. INTERFACE PER MIL-C-39012



414338-1
 PART NUMBER

THIS DRAWING IS A CONTROLLED DOCUMENT.		DWG: <i>[Signature]</i> 3/19/02 CHK: G. MICHAEL 4/6/02 APP: G. MICHAEL 4/6/02	Tyco Electronics Corporation Harrisburg, PA 17105-3608
DIMENSIONS: INCHES 0 PLC ± - 1 PLC ± .005 [.005] 2 PLC ± .005 [.005] 3 PLC ± .005 [.005] 4 PLC ± .005 [.005] ANGLES ± -	TOLERANCES UNLESS OTHERWISE SPECIFIED: 0 PLC ± - 1 PLC ± .005 [.005] 2 PLC ± .005 [.005] 3 PLC ± .005 [.005] 4 PLC ± .005 [.005] ANGLES ± -	PRODUCT SPEC: APPLICATION SPEC: WEIGHT: - FINISH: 2	SIZE: A2 CASE CODE: 00779 DRAWING NO: 414338 RESTRICTED TO: - SCALE: 8:1 SHEET: 1 OF 1 REV: E