

Excellent Integrated System Limited

Stocking Distributor

Click to view price, real time Inventory, Delivery & Lifecycle Information:

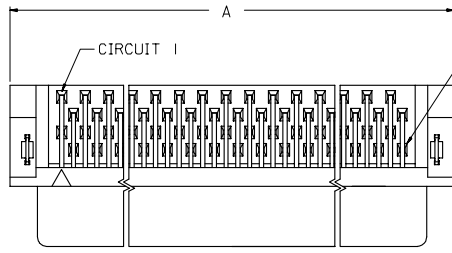
[Molex Connector Corporation](#)
[87552-0687](#)

For any questions, you can email us directly:

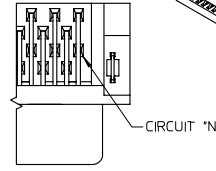
sales@integrated-circuit.com

10 9 8 7 6 5 4 3 2 1

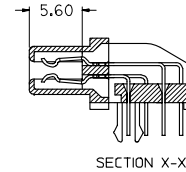
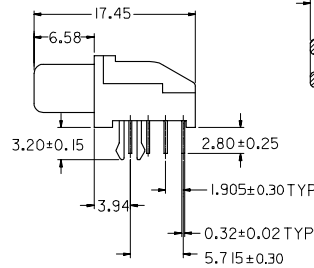
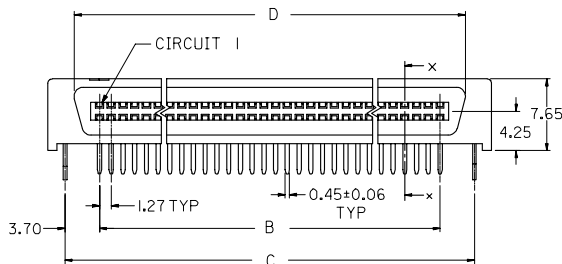
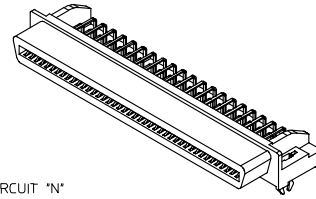
F
E
D
C
B
A



FOR CIRCUIT SIZES 68 AND 80 ONLY



FOR CIRCUIT SIZE 50 ONLY



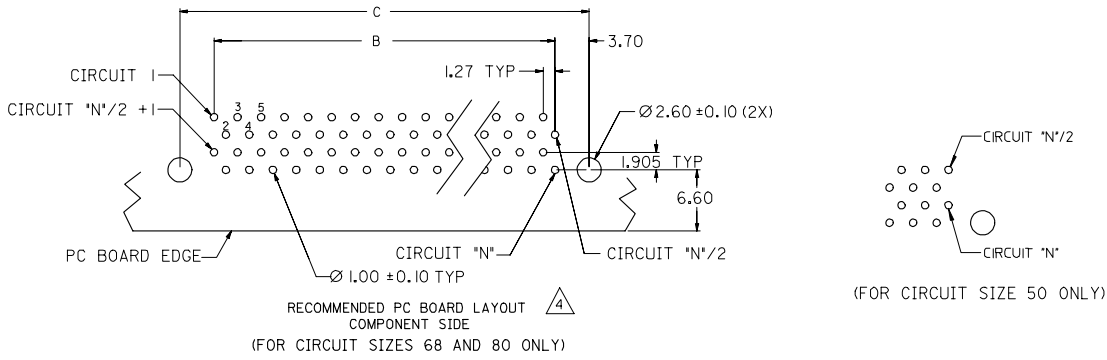
NOTES:

1. MATERIAL: HOUSING -- HIGH TEMP. THERMOPLASTIC, UL94-V0
TERMINALS -- COPPER ALLOY
2. PLATING:
 2A 0.75µM MIN. GOLD IN SELECTIVE CONTACT AREA AND
 2.5µM MIN. TIN IN SOLDER TAIL AREA, BOTH
 OVER 1.27µM MIN. NICKEL.
3. ASSEMBLY MATES WITH MOLEX P/N 71661-****.
4. RECOMMENDED P.C. BOARD THICKNESS IS 1.60MM.
5. PRODUCT SPEC. NO. : PS-87552-006
6. SEE TABLE ON SHEET 2 FOR ASSEMBLY PART NUMBERS.

| | | | | | | | | | |
|--|--|--|---|---------|---|---|------------------------------|------------------------|---------------------------|
| REVISED REC. NO. S2008-0347 DRAWN BY: DRWNSK/MC CHECKED BY: CHKDAT/SEE APPROVED BY: APPR/H/LONG H3 | 2007/11/12 2007/11/12 2007/11/14 | DESCRIPTION QUALITY SYMBOLS ▽=0 ▽=0 | GENERAL TOLERANCES (UNLESS SPECIFIED) | | DIMENSION STYLE MM ONLY | | SCALE NTS | DESIGN UNITS METRIC | THIRD ANGLE PROJECTION |
| | | | 4 PLACES ± --- ± --- 3 PLACES ± --- ± --- 2 PLACES ± 0.3 ± --- 1 PLACE ± --- ± --- | mm INCH | DRAWN BY: DS0H DATE: 1997/04/01 | TITLE EBBI, 1.27MM PITCH RECEPTACLE, R/A | | | |
| | | | ANGULAR ± 3 ° | | CHECKED BY: KCL/ING DATE: 1997/05/06 | MOLEX INCORPORATED | | | |
| | | | DRAFT WHERE APPLICABLE MUST REMAIN WITHIN DIMENSIONS | | APPROVED BY: SKT0H DATE: 1997/05/08 | MATERIAL NO. SEE TABLE | DOCUMENT NO. SD-87552-007 | SHEET NO. 1 OF 2 | |

9 8 7 6 5 4 3 2 1

| | | | | | | | | | | |
|---|-------|-------|-------|-------|----------|----------------------|---|---|---|---|
| | 10 | 9 | 8 | 7 | 6 | 5 | 4 | 3 | 2 | 1 |
| | D | C | B | A | CKT SIZE | ASSEMBLY PART NUMBER | | | | |
| F | 36.02 | 37.88 | 30.48 | 41.70 | 50 | 87552-0507 | | | | |
| | 47.45 | 49.31 | 41.91 | 53.13 | 68 | 87552-0687 | | | | |
| | 55.07 | 56.93 | 49.53 | 60.75 | 80 | 87552-0807 | | | | |



| | | | | | | | | | |
|--|---|---|---|--|---|-----|--------|--------------|------------------------|
| REVISED REC NO: S2008-0347 DRAWN BY: JRN/MSK/MC CHECKED BY: CHK/DAT/SEE APPROVED BY: APPR/H/LONG H3 | DESCRIPTION 2007/11/12 2007/11/12 2007/11/14 | QUALITY SYMBOLS | GENERAL TOLERANCES (UNLESS SPECIFIED) | | DIMENSION STYLE | | SCALE | DESIGN UNITS | THIRD ANGLE PROJECTION |
| | | $\nabla=0$ $\nabla=0$ | mm | INCH | MM ONLY | NTS | METRIC | | |
| | | 4 PLACES ± --- ± --- 3 PLACES ± --- ± --- 2 PLACES ± 0.3 ± --- 1 PLACE ± --- ± --- | DRAWN BY: DS0H CHECKED BY: KCL/ING APPROVED BY: SKT0H | DATE: 1997/04/01 DATE: 1997/05/06 DATE: 1997/05/08 | TITLE: EBB1, 1.27MM PITCH RECEPTACLE, R/A | | | | |
| | | ANGULAR ± 3 ° DRAFT WHERE APPLICABLE MUST REMAIN WITHIN DIMENSIONS | MATERIAL NO.: SEE TABLE SIZE: A3 | MOLEX INCORPORATED DOCUMENT NO.: SD-87552-007 | SHEET NO.: 2 OF 2 | | | | |