

## Excellent Integrated System Limited

Stocking Distributor

Click to view price, real time Inventory, Delivery & Lifecycle Information:

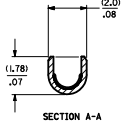
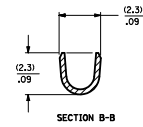
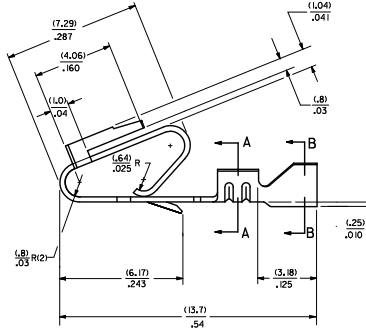
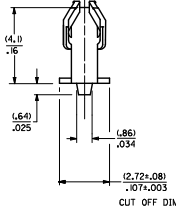
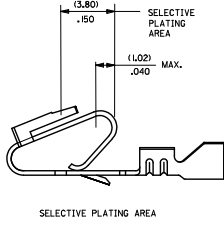
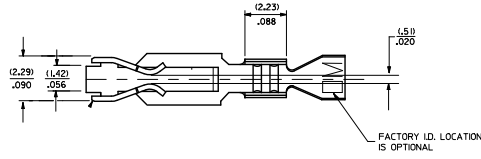
[Molex Connector Corporation](#)

[0008650121](#)

For any questions, you can email us directly:

[sales@integrated-circuit.com](mailto:sales@integrated-circuit.com)

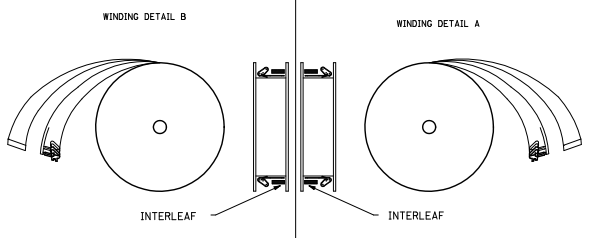
- NOTES:  
 1. MATERIAL: SEE LEGEND  
 2. FINISH: SEE LEGEND  
 3. PRODUCT SPECIFICATION: PS-40-02  
 4. DIMENSIONS GIVEN ACROSS CENTERLINES ARE SYMMETRICAL ABOUT THOSE CENTERLINES WITHIN HALF THE TOTAL TOLERANCE.  
 5. CRIMP FOR 22 TO 26 GA. WIRE WITH MAX. INSULATION DIA. OF (1.65)/.005  
 6. THIS PRODUCT CONFORMS TO CLASS B REQUIREMENTS OF COSMETIC SPECIFICATION PS-45499-002.



MAT'L: (L27)/.0106 THK J  
 7258 FORM  
 BLANK+ CHAIN PER DETAIL B  
 A=CHAIN PER DETAIL A  
 L= LOOSE

PLATING PER SDES- 88

(909) - HOT TIN DFP: 0.002541/.000100 MIN.  
 (558) - SELECT GOLD: 0.000761/.000030 MIN.  
 OVERALL GOLD FLASH: 0.000050/.000002 MIN.  
 OVERALL NICKEL UNDERPLATE: 0.001271/.000050 MIN.  
 (561) - SELECT GOLD: 0.000761/.000030 MIN.  
 OVERALL NICKEL UNDERPLATE: 0.001271/.000050 MIN.  
 (555) - SELECT GOLD: 0.000381/.000015 MIN.  
 OVERALL NICKEL UNDERPLATE: 0.000761/.000030 MIN.



QUALITY SYMBOLS	GENERAL TOLERANCES (UNLESS SPECIFIED)		DIMENSION STYLE		SCALE	DESIGN UNITS	THIRD ANGLE PROJECTION
	mm	INCH	MM/IN				
▽=0	4 PLACES ±---	±---	DRAWN BY	DATE	---	INCH	☉
▽=0	3 PLACES ±---	±.010	CHECKED BY	DATE			
▽=0	2 PLACES ±0.25	±.014	APPROVED BY	DATE			
	1 PLACE ±0.36	±---	LENZ	12/03/87			
	ANGULAR ±1/2°		MATERIAL NO.				
	DRAFT WHERE APPLICABLE MUST REMAIN WITHIN DIMENSIONS		SEE CHART				
			DOCUMENT NO.				

REMOVE PINS  
 EC MOLLEP202-821  
 DRAWN BY: 20/01/04  
 CHECKED BY: 20/01/04  
 APPROVED BY: 20/01/04

JJS 12/03/87  
 PATEL 12/03/87  
 LENZ 12/03/87

TITRE  
 TRIFURCON TERMINAL  
 CRIMP TYPE - 156 CENTERS  
 22 TO 26 AWG

MOLEX MOLEX INCORPORATED

SD-7258 1 OF 2

7258-(*)*			7258-A(*)*			PART NO. ENG. NO			PART NO. ENG. NO(SUFFIX ONLY)			PART NO. ENG. NO(SUFFIX ONLY) VOID CKT.			PART NO. ENG. NO(SUFFIX ONLY) VOID CKT.		
08-50-0183	7258-IP909		08-04-0001	7258-AIP99													
08-50-0185	7258-IP909IL		08-65-0121	7258-AIP56.II	ES-276-P561												
08-50-0283	7258-IP909IA		08-65-0123	7258-AIP58.II	MAKE FROM												
			08-56-0124	7258-AIP58.II	7258-AIP56.II												
				7258-AIP58.II													
				7258-AIP58.II													
			08-52-0124	7258-AIP909													
			08-52-0125	7258-AIP909IL													
			08-65-0126	7258-AIP55													
			08-65-0127	7258-AIP55IL	ES-276-P555												

COLUMN NO. 1	CONT. IN COLUMN NO.	SHEET NO.	COLUMN NO. 2	CONT. IN COLUMN NO.	SHEET NO.	COLUMN NO. 3	CONT. IN COLUMN NO.	SHEET NO.	COLUMN NO. 4	CONT. IN COLUMN NO.	SHEET NO.	COLUMN NO. 4	CONT. IN COLUMN NO.	SHEET NO.	COLUMN NO. 4	CONT. IN COLUMN NO.	SHEET NO.
--------------	---------------------	-----------	--------------	---------------------	-----------	--------------	---------------------	-----------	--------------	---------------------	-----------	--------------	---------------------	-----------	--------------	---------------------	-----------

<b>SEE SHEET 1</b> EC NO. UEP202-821 DRAWING NO. 207/01/04 CHECKED BY 207/01/05 APPROVED BY 207/01/05 DESIGNED BY	QUALITY SYMBOLS	GENERAL TOLERANCES (UNLESS SPECIFIED)	DIMENSION STYLE	SCALE	DESIGN UNITS	THIRD ANGLE PROJECTION
	▽=0	mm INCH	MM ONLY	---	INCH	
	▽=0	4 PLACES +--- +---	DRAWN BY	DATE	TITLE	
	▽=0	3 PLACES +--- +---	JJS	12/07/87	TRIFURCON TERMINAL CRIMP TYPE	
	2 PLACES +--- +---	CHECKED BY	DATE			
	1 PLACE +--- +---	PATEL	12/07/87			
	ANGULAR ±1/2°	APPROVED BY	DATE			
	DRAFT WHERE APPLICABLE MUST REMAIN WITHIN DIMENSIONS	LENZ	12/07/87			
		RATERIAL NO.	SEE CHART	DOCUMENT NO.		
		SIZE	D THIS DRAWING CONTAINS INFORMATION THAT IS PROPRIETARY TO MOLEX INCORPORATED AND SHOULD NOT BE USED WITHOUT WRITTEN PERMISSION			