

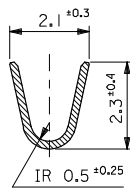
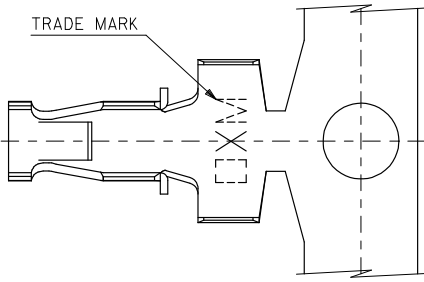
Excellent Integrated System Limited

Stocking Distributor

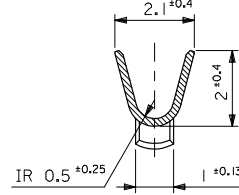
Click to view price, real time Inventory, Delivery & Lifecycle Information:

[Molex Connector Corporation](#)
[08-70-0106](#)

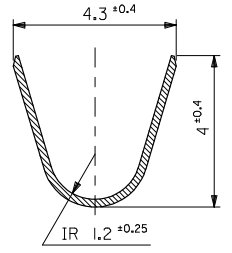
For any questions, you can email us directly:
sales@integrated-circuit.com



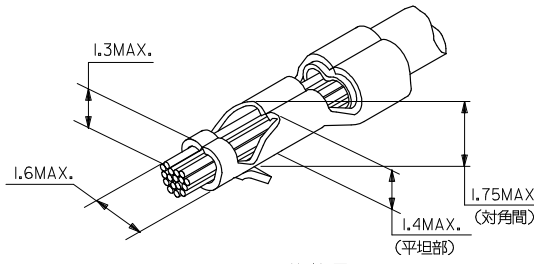
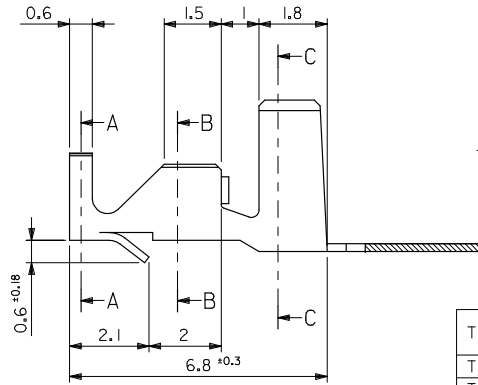
SECT. A-A



SECT. B-B



SECT. C-C



圧着外觀図
OUTSIDE VIEW OF CRIMP

NOTES

1. 推奨プリント基板孔径: $\phi 1.8^{+0.1}_0$
RECOMMENDED P.C.B. HOLES: $\phi 1.8^{+0.1}$
2. 推奨プリント基板厚: $t1.57^{+0.2}$
RECOMMENDED P.C.B. THICKNESS: $1.57^{+0.2}$
3. 材料の厚み: 0.203
MATERIAL THICKNESS: 0.203

TIN-LEAD(90-10) 3.8 μ m MIN. OVER NICKEL 1.3 μ m MIN.	PHOSPHOR BRONZE	CHAIN	39-00-0277	5298PBPT
	BRASS	CHAIN	39-00-0276	5298PT
TIN 0.9 μ m MIN. REFLOW TREATMENT (PRE-PLATED)	PHOSPHOR BRONZE	CHAIN	39-00-0230	5298PBT
TIN 0.9 μ m MIN. OVER COPPER 0.5 μ m MIN. (PRE-PLATED)	BRASS	CHAIN	08-70-0106	5298T
PLATING	MATERIAL	FORM	EDP NO.	ENG. NO.

材料 MATERIAL	SEE TABLE & NOTE
仕上り FINISH	—
適用電線範囲 WIRE RANGE	AWG #18-22
被覆外径 INS. RANGE	$\phi 1.7-3.05$

REVISED	2008/03/24	2008/03/24
EC NO. J2008-3347	DRWNAME	2008/03/24
CHYO:THAYAMA	APPR:ANKITA	2008/03/24
DESCRIPTION		
REVISION		

GENERAL TOLERANCES (UNLESS SPECIFIED)	
10 UNDER	± 0.2
10 OVER 30 UNDER	± 0.25
30 OVER	± 0.3
ANGULAR	$\pm 3^\circ$
DRAFT WHERE APPLICABLE MUST REMAIN WITHIN DIMENSIONS	

DIMENSION STYLE	MM ONLY
SCALE	10:1
DESIGN UNITS	METRIC
THIRD ANGLE PROJECTION	
DRAWN BY	H. HIRAMOTO
DATE	'91/09/05
CHECKED BY	H. HIRAMOTO
DATE	'93/07/06
APPROVED BY	M. FUKUSHIMA
DATE	'93/07/06
MATERIAL NO.	SEE TABLE
SIZE	A3

TITLE		LOW PROFILE PC BOARD CRIMP PIN	
MOLEX INCORPORATED		SD-5298-001	
DOCUMENT NO.		SHEET NO. 1 OF 1	