



Excellent Integrated System Limited

Stocking Distributor

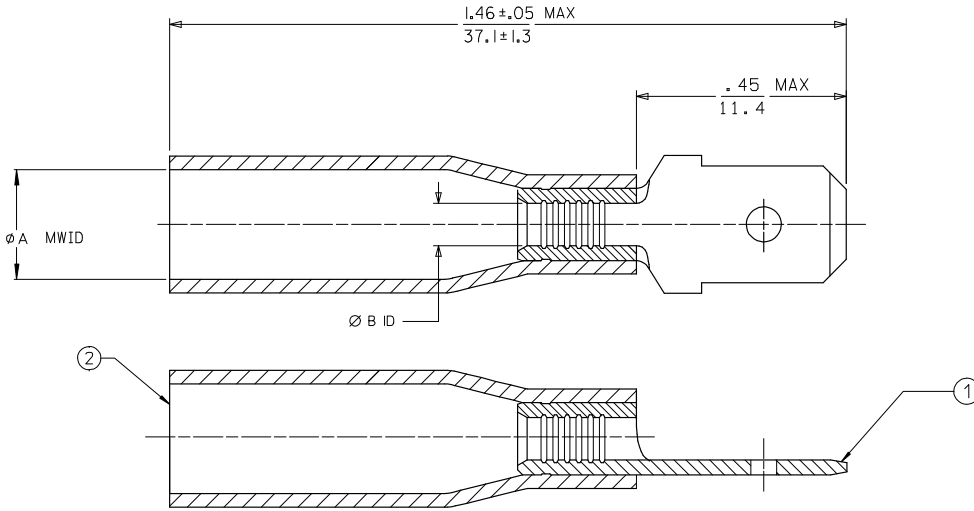
Click to view price, real time Inventory, Delivery & Lifecycle Information:

[Molex Connector Corporation](#)
[19164-0019](#)

For any questions, you can email us directly:

sales@integrated-circuit.com

MATERIAL NO.	ENGINEERING NO.	ØA MWID	ØB ID	TERMINAL MATERIAL	TERMINAL FINISH
191640019	SAMCT-2	.185/4.70 (D)	.054/1.37 (D)	BRASS, .031/0.79 THK REF	ZINC CHROMATE
191640084	SMCT-2	.195/4.95 (D)	.082/2.08	BRASS, .031/0.79 THK REF	ZINC CHROMATE
191640078	SCMCT-2	.275/6.99 (D)	.144/3.65 (D)	BRASS, .031/0.79 THK REF	ZINC CHROMATE



SALES DRAWING

NOTES:

- (D) 1. TAB DIMENSIONS PER UL310 SPECIFICATIONS.
- (D) 2. TAB MATERIAL: SEE CHART
FINISH: SEE CHART
- (D) 3. INSULATION MATERIAL: HEAT SHRINKABLE TUBING WITH HOTMELT ADHESIVE INNER LINER,
- (D) 4. MWID = MAXIMUM WIRE INSULATION DIAMETER.
- (D) 5. PART IS ROHS COMPLAINT.

CHANGED MATL & FINISH EC NO: ETC2007-0081 DRAWING: 2008/01/28 CHKD: JACQUELL APPR: JACQUELL 2008/02/15	QUALITY SYMBOLS ▽=0 ▽=0	GENERAL TOLERANCES (UNLESS SPECIFIED)		DIMENSION STYLE		SCALE	DESIGN UNITS	THIRD ANGLE PROJECTION
			mm	INCH	IN/MM	---	INCH	
		4 PLACES	±---	±---				
		3 PLACES	±---	±.005				
			2 PLACES	±0.13	±.010			
			1 PLACE	±0.25	±---			
			ANGULAR ±---°					
			DRAFT WHERE APPLICABLE MUST REMAIN WITHIN DIMENSIONS					
			MATERIAL NO.	SEE CHART				
			SIZE	B	THIS DRAWING CONTAINS INFORMATION THAT IS PROPRIETARY TO MOLEX INCORPORATED AND SHOULD NOT BE USED WITHOUT WRITTEN PERMISSION			