

## **Excellent Integrated System Limited**

Stocking Distributor

Click to view price, real time Inventory, Delivery & Lifecycle Information:

[IXYS Corporation](#)  
[UGE3126AY4](#)

For any questions, you can email us directly:  
[sales@integrated-circuit.com](mailto:sales@integrated-circuit.com)



# UGE 3126 AY4

## High Voltage Rectifiers

**$V_{RRM} = 24000\text{ V}$**   
 **$I_{F(AV)M} = 2.0\text{ A}$**

$V_{RRM}$ V	Standard Types	Power Designation
24000	UGE 3126 AY4	Si-E 9000 / 4000-0.7



Symbol	Conditions	Ratings	
$I_{F(RMS)}$		5	A
$I_{F(AV)M}$	air self cooling, $T_{amb} = 45^\circ\text{C}$		
	- without cooling plate	0.8	A
	- with colling plate	1.0	A
	forced air cooling: $v = 3\text{ m/s}$ , $T_{amb} = 35^\circ\text{C}$		
	- without cooling plate	1.4	A
	- with cooling plate	1.7	A
	oil cooling, $T_{amb} = 35^\circ\text{C}$		
	- without cooling plate	2.0	A
	- with cooling plate	2.0	A
$P_{RSM}$	$T_{(vj)} = 150^\circ\text{C}$ ; $t_p = 10\ \mu\text{s}$	1.6	kW
$I_{FSM}$	non repetitive, 50 c/s (for 60 c/s add 10%)		
	$T_{(vj)} = 45^\circ\text{C}$ ; $t_p = 10\text{ ms}$	70	A
	$T_{(vj)} = 150^\circ\text{C}$ ; $t_p = 10\text{ ms}$	60	A
$T_{amb}$		-40...+150	$^\circ\text{C}$
$T_{stg}$		-40...+150	$^\circ\text{C}$
$T_{(vj)}$		150	$^\circ\text{C}$
<b>Weight</b>		127	g

### Features

- Hermetically sealed Epoxy
- Use in oil
- Avalanche characteristics

### Applications

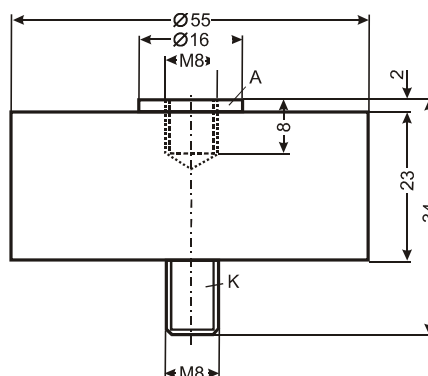
- X-Ray equipment
- Electrostatic dust precipitators
- Electronic beam welding
- Lasers
- Cable test equipment

### Advantages

- Simple mounting
- Improved temperature and power cycling
- Reduced protection circuits
- Series and parallel operation

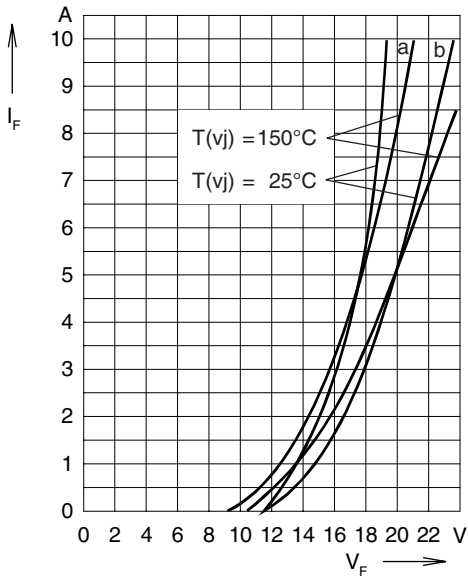
Symbol	Conditions	Characteristic Values	
$I_R$	$T_{(vj)} = 150^\circ\text{C}$ ; $V_R = V_{RRM}$	$\leq 1$	mA
$V_F$	$I_F = 3\text{ A}$ $T_{(vj)} = 25^\circ\text{C}$	18	V
$V_{TO}$	$T_{(vj)} = 150^\circ\text{C}$	12	V
$r_T$	$T_{(vj)} = 150^\circ\text{C}$	1.8	$\Omega$
<b>a</b>	<b>f = 50Hz</b>	5 x 9,81	m/s <sup>2</sup>
<b><math>M_d</math></b>		8	Nm

Dimensions in mm (1 mm = 0.0394")



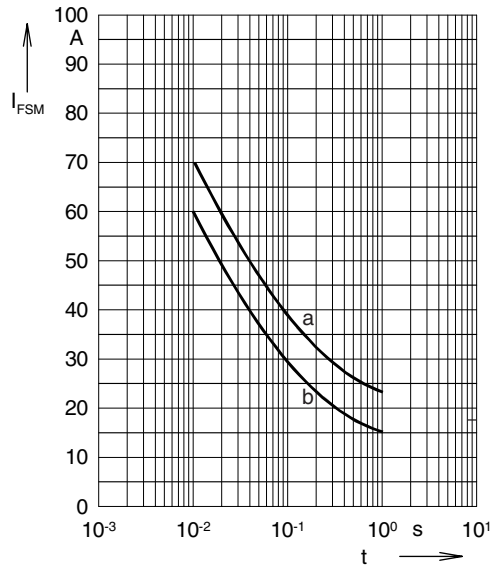
Data according to IEC 60747-2

IXYS reserve the right to change limits, test conditions and dimensions.



**Fig. 1: Forward characteristics**

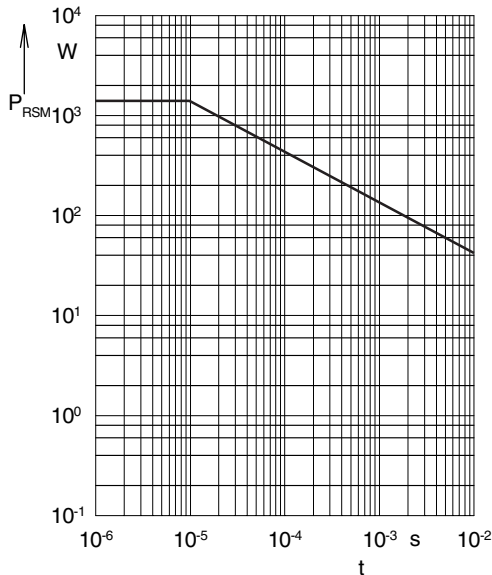
Instantaneous forward current  $I_F$  as a function of instantaneous forward voltage drop  $V_F$  for junction temperature  $T_{(vj)} = 25^\circ\text{C}$  and  $T_{(vj)} = 150^\circ\text{C}$   
 a = Mean value characteristic  
 b = Limit value characteristic



**Fig. 2: Characteristics of maximum permissible current**

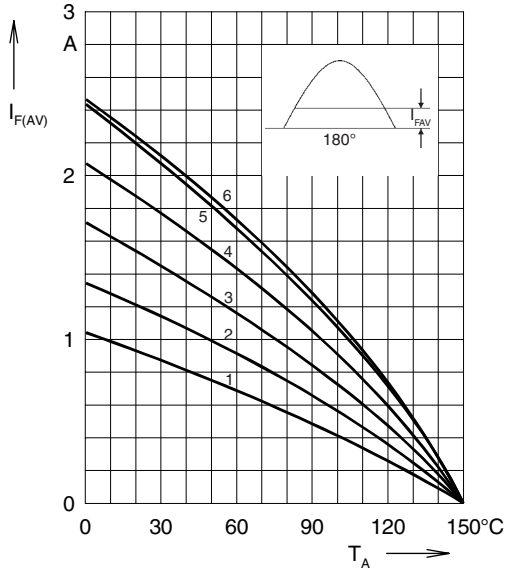
The curves show the non repetitive peak one cycle surge forward current  $I_{FSM}$  as a function of time  $t$  and serve for rating protective devices.

a = Initial state  $T_{(vj)} = 45^\circ\text{C}$   
 b = Initial state  $T_{(vj)} = 150^\circ\text{C}$



**Fig. 3: Power loss**

Non repetitive peak reverse power loss  $P_{RSM}$  as a function of time  $t$ ,  $T_{(vj)} = 150^\circ\text{C}$



**Fig. 4: Load diagramm**

Mean forward current  $I_{F(AV)}$  of one module for a sine half wave for various cooling modes as a function of the cooling medium temperature  $T_{amb}$  for a resistive load (horizontal mounting).

**Cooling modes**

- |                        |         |               |
|------------------------|---------|---------------|
| 1 = air self cooling   | without | cooling plate |
| 2 = air self cooling   | with    | cooling plate |
| 3 = forced air cooling | without | cooling plate |
| 4 = forced air cooling | with    | cooling plate |
| 5 = oil cooling        | without | cooling plate |
| 6 = oil cooling        | with    | cooling plate |