

## Excellent Integrated System Limited

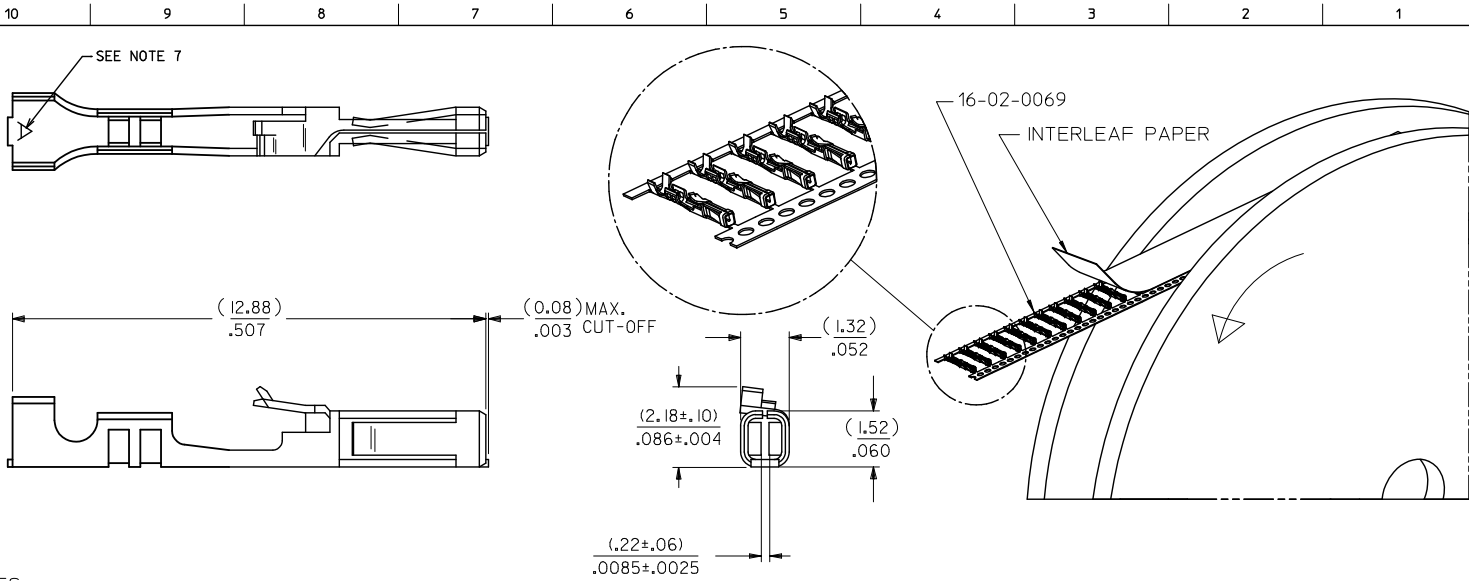
Stocking Distributor

Click to view price, real time Inventory, Delivery & Lifecycle Information:

[Molex Connector Corporation](#)  
[0016020069](#)

For any questions, you can email us directly:

[sales@integrated-circuit.com](mailto:sales@integrated-circuit.com)



NOTES:

1. TERMINAL TO BE USED IN HOUSING 70066-\*\*\*\* AND 70450-\*\*\*\*.
2. REFER TO PRODUCT SPECIFICATION PS-70058.
3. REFER TO MOLEX OPERATIONS AND SERVICE MANUAL FOR CRIMP DETAILS.
4. TERMINAL TO BE USED WITH (0.64)/.025 SQUARE PINS.
5. TERMINAL TO BE USED WITH 24-30 AWG STRANDED WIRE WITH (1.52)/.060 MAXIMUM DIAMETER INSULATION.
6. TERMINALS SUPPLIED IN REEL FORM.
7. CRIMP SIZE INDICATOR A=24-30 AWG

PLATING:

.000150 MINIMUM TIN PLATE IN SELECT AREA,  
OVER NICKEL PLATE OVERALL.

REEL UNWIND DIR EC NO: UCP2013-5345 DRAWN BY: RWHIPPLE 2013/06/11 CHECKED BY: CHYCDMORGAN 2013/06/11 APPROVED BY: APPRESMILLER 2013/07/09	QUALITY SYMBOLS ▽=0 ▽=0 ▽=0	GENERAL TOLERANCES (UNLESS SPECIFIED)		DIMENSION STYLE		SCALE	DESIGN UNITS	THIRD ANGLE PROJECTION
		mm	INCH	MM/IN	10:1	INCH	⊙ □	
		4 PLACES ± --- ± ---		DRAWN BY	DATE	TITLE		
		3 PLACES ± --- ± .005		RWHIPPLE	2013/06/11	TERMINAL - BOX/CRIMP		
		2 PLACES ± 0.13 ± .01		CHECKED BY	DATE	FOR 24-30 AWG		
		1 PLACE ± 0.25 ± ---		JAS	1988/02/03	ON A REEL		
		0 PLACE ± --- ± ---		APPROVED BY	DATE	<b>molex</b>		
				SMILLER	2013/07/09	MATERIAL NO.	DOCUMENT NO.	SHEET NO.
						16-02-0069	SD-70058-0004	1 OF 1
				SIZE	THIS DRAWING CONTAINS INFORMATION THAT IS PROPRIETARY TO MOLEX INCORPORATED AND SHOULD NOT BE USED WITHOUT WRITTEN PERMISSION			
				B				