



Excellent Integrated System Limited

Stocking Distributor

Click to view price, real time Inventory, Delivery & Lifecycle Information:

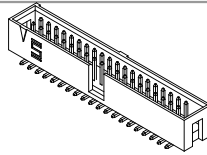
[Samtec, Inc.](#)
[HTST-105-01-L-DV-A](#)

For any questions, you can email us directly:
sales@integrated-circuit.com

REVISION Q

NOTES:

1. Ⓢ REPRESENTS A CRITICAL DIMENSION.
2. ASSEMBLE GOLD PLATED END AS SHOWN.
3. TERMINAL PUSHOUT FORCE: 2 lbs BEFORE HEAT.
4. TERMINALS TO BE FLUSH TO .010[.25] BELOW TOP OF SHROUD.



HTST-1XX-01-XX-DV-XX

DO NOT SCALE FROM THIS PRINT

No OF POSITIONS
-02 THRU -36 (PER ROW)

LEAD STYLE
-01: SURFACE MOUNT (USE T-1S6-08-X-2)

PLATING SPECIFICATION

- T: TIN (USE T-1S6-08-T-2)
- S: SELECTIVE GOLD (USE T-1S6-08-S-2)
- L: LIGHT SELECTIVE GOLD (USE T-1S6-08-L-2)
- TM: MATTE TIN (USE T-1S6-08-T-2)
- SM: HEAVY SELECTIVE GOLD, MATTE TIN TAIL (USE T-1S6-08-S-2)
- LM: LIGHT SELECTIVE GOLD, MATTE TIN TAIL (USE T-1S6-08-L-2)

OPTION

- A: ALIGNMENT PIN (* ASO OPTION) (SEE FIG. 3 SHT. 2)
- P: PICK & PLACE PAD (USE PPP-22)
- TR: TAPE & REEL (POSITIONS -02 THRU -25 ONLY)

ROW SPECIFICATION

- DV: DOUBLE VERTICAL (USE HTST-XX-D)

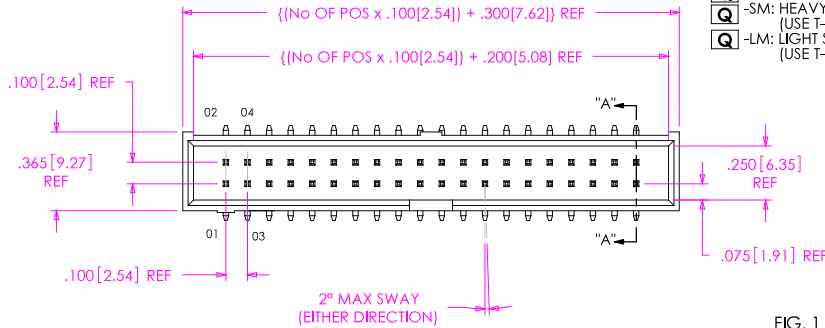
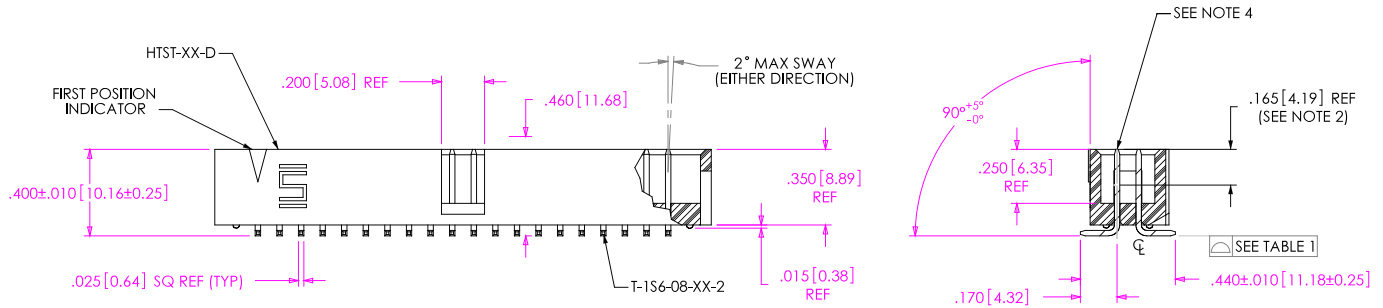
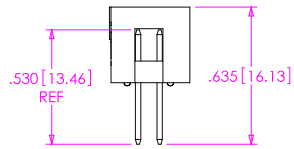


FIG. 1
HTST-120-01-X-DV SHOWN

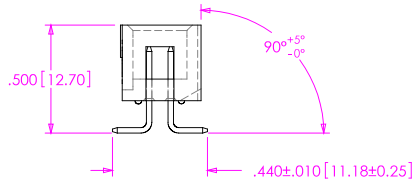
TABLE 1	
POSITIONS	COPLANARITY
-02 THRU -15	.0040[.102]
-16 THRU -36	.0060[.152]



IN-PROCESS VIEW 1



IN-PROCESS VIEW 2



UNLESS OTHERWISE SPECIFIED, DIMENSIONS ARE IN INCHES. TOLERANCES ARE:
 DECIMALS .XX: ±.01 [.3]
 .XXX: ±.005 [.13]
 .XXXX: ±.0020 [.051]

MATERIAL: DO NOT SCALE DRAWING
 INSULATOR: ZYTEL HTNFR52G30NH, COLOR: NATURAL
 ALTERNATE MATERIAL: THERMAX CG933
 TERMINAL: PHOS BRONZE

PROPRIETARY NOTE

THIS DOCUMENT CONTAINS INFORMATION CONFIDENTIAL AND PROPRIETARY TO SAMTEC, INC. AND SHALL NOT BE REPRODUCED OR TRANSFERRED TO OTHER DOCUMENTS OR DISCLOSED TO OTHERS OR USED FOR ANY PURPOSE OTHER THAN THAT WHICH IT WAS OBTAINED WITHOUT THE EXPRESSED WRITTEN CONSENT OF SAMTEC, INC.



SAMTEC

520 PARK EAST BLVD., NEW ALBANY, IN 47150
 * PHONE: 812.944.6733 FAX: 812.948.5047
 e-Mail: INFO@SAMTEC.COM CODE: 55322

DESCRIPTION: HIGH TEMP TOP SHROUD
 DWG. NO. HTST-1XX-01-XX-DV-XX
 BY: T. WERNE 07/11/2001 SHEET 1 OF 3

F:\DWG\MISC\MKTG\HTST-1XX-01-XX-DV-XX-MKT.SLDDRW

REVISION Q

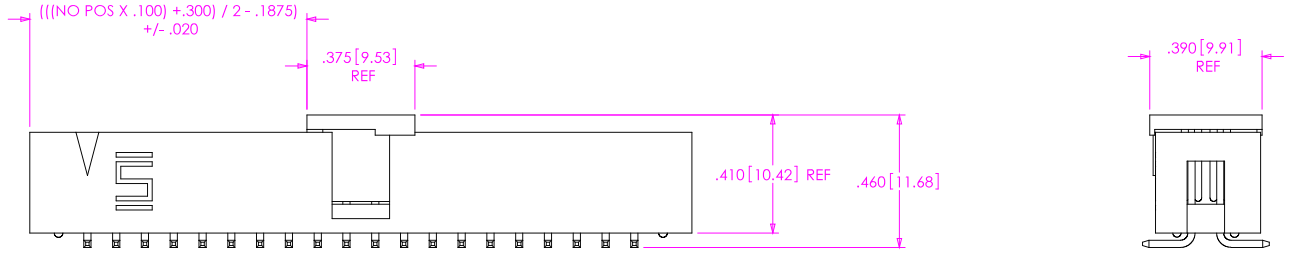


FIG. 2

-P: PICK & PLACE PAD OPTION
 (SAME AS FIG. 1 UNLESS OTHERWISE STATED)

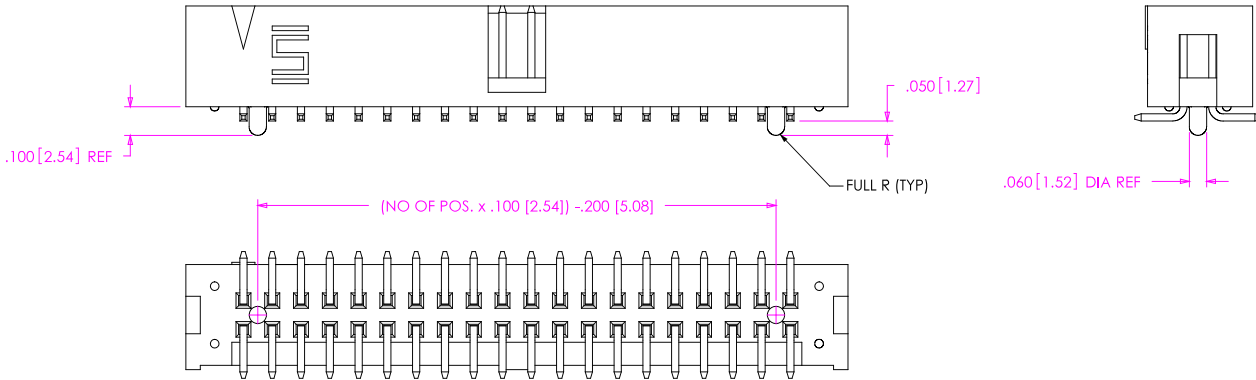
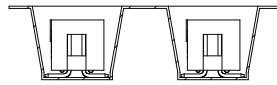
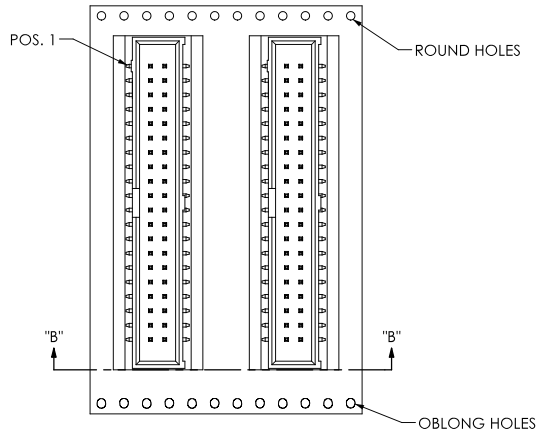


FIG. 3

-A: ALIGNMENT PIN OPTION
 (SAME AS FIG. 1 UNLESS OTHERWISE STATED)

<p>PROPRIETARY NOTE THE DOCUMENT CONTAINS INFORMATION CONFIDENTIAL AND PROPRIETARY TO SAMTEC, INC. AND SHALL NOT BE REPRODUCED OR TRANSFERRED TO OTHER DOCUMENTS OR DISCLOSED TO OTHERS OR USED FOR ANY PURPOSE OTHER THAN THAT WHICH IT WAS OBTAINED WITHOUT THE EXPRESSED WRITTEN CONSENT OF SAMTEC, INC.</p> <p>DO NOT SCALE DRAWING</p> <p>SHEET SCALE: 2:1</p> <p>F:\DWG\MISC\MKTG\HTST-1XX-01-XX-DV-XX-MKT.SLDDRW</p>	<p>SAMTEC 520 Park East Blvd. New Albany, IN 47151 Phone (812) 944-6733 Fax (812) 948-5047 e-Mail: INFO@SAMTEC.COM CODE: 55322</p>
	<p>DESCRIPTION: HIGH TEMP TOP SHROUD</p> <p>DWG. NO. HTST-1XX-01-XX-DV-XX</p> <p>BY: T. WERNE 07/11/2001 SHEET 2 OF 3</p>

REVISION Q

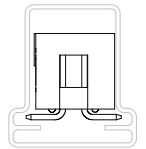


SECTION "B"- "B"
SCALE 1 : 1

USER DIRECTION OF REELING →
POCKET NOT DETAILED

TAPE & REEL VIEW

TUBE VIEW



TUBE: PT-1-24-02-08
PLUG: TP-13

PROPRIETARY NOTE
 THIS DOCUMENT CONTAINS INFORMATION
 CONFIDENTIAL AND PROPRIETARY TO
 SAMTEC, INC. AND SHALL NOT BE REPRODUCED
 OR TRANSFERRED TO OTHER DOCUMENTS OR
 DISCLOSED TO OTHERS OR USED FOR ANY
 PURPOSE OTHER THAN THAT WHICH IT WAS
 OBTAINED WITHOUT THE EXPRESSED WRITTEN
 CONSENT OF SAMTEC, INC.

DO NOT SCALE DRAWING

SHEET SCALE: 2:1

SAMTEC

520 Park East Blvd, New Albany, IN 47151
 Phone (812) 944-6733 Fax (812) 948-5047
 e-Mail: INFO@SAMTEC.COM CODE: 55322

DESCRIPTION:	HIGH TEMP TOP SHROUD
DWG. NO.	HTST-1XX-01-XX-DV-XX
BY:	T. WERNE 07/11/2001 SHEET 3 OF 3