

## Excellent Integrated System Limited

Stocking Distributor

Click to view price, real time Inventory, Delivery & Lifecycle Information:

[STMicroelectronics](#)

[STGW35NB60S](#)

For any questions, you can email us directly:

[sales@integrated-circuit.com](mailto:sales@integrated-circuit.com)



## STGW35NB60S

N-channel 35A - 600V - TO-247

Low drop PowerMESH™ IGBT

### Features

Type	V <sub>CES</sub>	V <sub>CE(sat)</sub> (Max) @ 25°C	I <sub>C</sub> @100°C
STGW35NB60S	600V	< 1.7V	35A

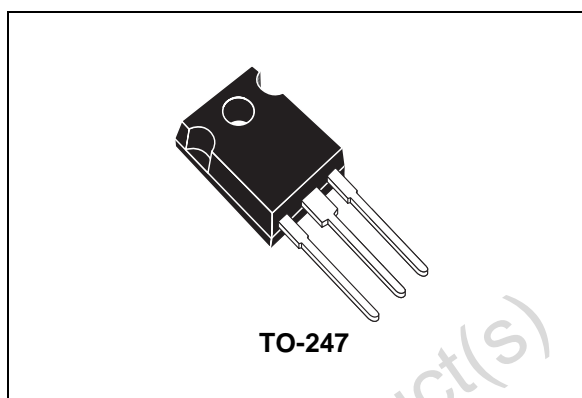
- Low on-voltage drop (V<sub>CEsat</sub>)
- Low input capacitance
- High current capability

### Description

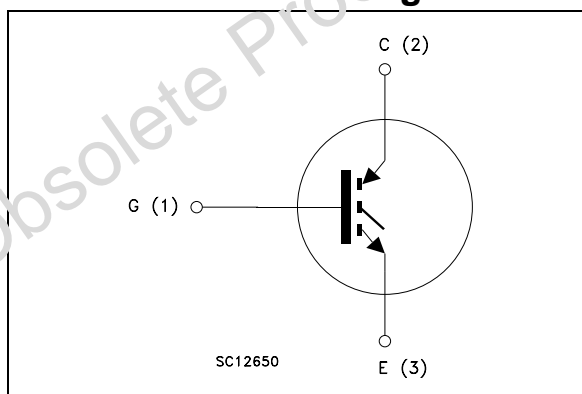
Using the latest high voltage technology based on a patented strip layout, STMicroelectronics has designed an advanced family of IGBTs, the PowerMESH™ IGBTs, with outstanding performances.

### Applications

- Light dimmer
- HID
- Welding
- Motor control
- Static relays



### Internal schematic diagram



### Order code

Part number	Marking	Package	Packaging
STGW35NB60S	GW35NB60S	TO-247	Tube

## Contents

<b>1</b>	<b>Electrical ratings</b> .....	<b>3</b>
<b>2</b>	<b>Electrical characteristics</b> .....	<b>4</b>
	2.1 Electrical characteristics (curves)     6	
<b>3</b>	<b>Test Circuits</b> .....	<b>9</b>
<b>4</b>	<b>Package mechanical data</b> .....	<b>10</b>
<b>5</b>	<b>Revision history</b> .....	<b>12</b>

Obsolete Product(s) - Obsolete Product(s)

# 1 Electrical ratings

**Table 1. Absolute maximum ratings**

Symbol	Parameter	Value	Unit
$V_{CES}$	Collector-emitter voltage ( $V_{GS} = 0$ )	600	V
$I_C^{(1)}$	Collector current (continuous) at 25°C	70	A
$I_C^{(1)}$	Collector current (continuous) at 100°C	35	A
$I_{CM}^{(2)}$	Collector current (pulsed)	250	A
$V_{GE}$	Gate-emitter voltage	± 20	V
$P_{TOT}$	Total dissipation at $T_C = 25^\circ\text{C}$	200	W
$T_j$	Operating junction temperature	- 55 to 150	°C

1. Calculated according to the iterative formula:

$$I_C(T_C) = \frac{T_{JMAX} - T_C}{R_{THJ-C} \times V_{CESAT(MAX)}(T_C, I_C)}$$

2. Pulse width limited by max. junction temperature

**Table 2. Thermal resistance**

		Value	Unit
Rthj-case	Thermal resistance junction-case max	0.625	°C/W
Rthj-amb	Thermal resistance junction-ambient max	50	°C/W

## 2 Electrical characteristics

(T<sub>CASE</sub> = 25 °C unless otherwise specified)

**Table 3. Static**

Symbol	Parameter	Test conditions	Min.	Typ.	Max.	Unit
V <sub>BR(CES)</sub>	Collector-Emitter Breakdown Voltage	I <sub>C</sub> = 1mA, V <sub>GE</sub> = 0	600			V
V <sub>CE(SAT)</sub>	Collector-Emitter Saturation Voltage	V <sub>GE</sub> = 15V, I <sub>C</sub> = 20A, V <sub>GE</sub> = 15V, I <sub>C</sub> = 20A, T <sub>J</sub> = 125°C		1.25 1.2	1.7	V V
V <sub>GE(th)</sub>	Gate Threshold Voltage	V <sub>CE</sub> = V <sub>GE</sub> , I <sub>C</sub> = 250μA	2.5		5	V
I <sub>CES</sub>	Collector-Emitter Leakage Current (V <sub>GE</sub> = 0)	V <sub>CE</sub> = Max Rating, V <sub>CE</sub> = Max Rating, T <sub>C</sub> = 125°C			10 100	μA μA
I <sub>GES</sub>	Gate-Emitter Leakage Current (V <sub>CE</sub> = 0)	V <sub>GE</sub> = ± 20V, V <sub>CE</sub> = 0			± 100	nA
g <sub>fs</sub>	Forward Transconductance	V <sub>CE</sub> = 10V, I <sub>C</sub> = 18A		20		S

**Table 4. Dynamic**

Symbol	Parameter	Test conditions	Min.	Typ.	Max.	Unit
C <sub>ies</sub>	Input Capacitance	V <sub>CE</sub> = 25V, f = 1 MHz, V <sub>GE</sub> = 0		1820		pF
C <sub>oes</sub>	Output Capacitance			167		pF
C <sub>res</sub>	Reverse Transfer Capacitance			27		pF
Q <sub>g</sub>	Total Gate Charge	V <sub>CE</sub> = 480V, I <sub>C</sub> = 20A,		83	115	nC
Q <sub>ge</sub>	Gate-Emitter Charge	V <sub>GE</sub> = 15V,		10		nC
Q <sub>gc</sub>	Gate-Collector Charge	(see Figure 16)		27		nC
I <sub>CL</sub>	Turn-Off SOA Minimum Current	V <sub>clamp</sub> = 480V , T <sub>J</sub> = 125°C R <sub>G</sub> = 100Ω	80			A

STGW35NB60S

Electrical characteristics

**Table 5. Switching on/off (inductive load)**

Symbol	Parameter	Test conditions	Min.	Typ.	Max.	Unit
$t_{d(on)}$ $t_r$ $(di/dt)_{on}$	Turn-on Delay Time Current Rise Time Turn-on Current Slope	$V_{CC} = 480V, I_C = 20A$ $R_G = 100\Omega, V_{GE} = 15V,$ see <a href="#">Figure 15</a> and <a href="#">17</a>		92 70 340		ns ns A/ $\mu$ s
$t_{d(on)}$ $t_r$ $(di/dt)_{on}$	Turn-on Delay Time Current Rise Time Turn-on Current Slope	$V_{CC} = 480V, I_C = 20A$ $R_G = 100\Omega, V_{GE} = 15V,$ $T_J = 125^\circ C$ see <a href="#">Figure 15</a> and <a href="#">17</a>		80 73 320		ns ns A/ $\mu$ s
$t_r(V_{off})$ $t_{d(off)}$ $t_f$	Off Voltage Rise Time Turn-off Delay Time Current Fall Time	$V_{CC} = 480V, I_C = 20A,$ $R_{GE} = 100\Omega, V_{GE} = 5V,$ see <a href="#">Figure 15</a> and <a href="#">17</a>		0.78 1.1 0.79		$\mu$ s $\mu$ s $\mu$ s
$t_r(V_{off})$ $t_{d(off)}$ $t_f$	Off Voltage Rise Time Turn-off Delay Time Current Fall Time	$V_{CC} = 480V, I_C = 20A,$ $R_{GE} = 100\Omega, V_{GE} = 15V,$ $T_J = 125^\circ C$ see <a href="#">Figure 15</a> and <a href="#">17</a>		1.1 2.4 1.2		$\mu$ s $\mu$ s $\mu$ s

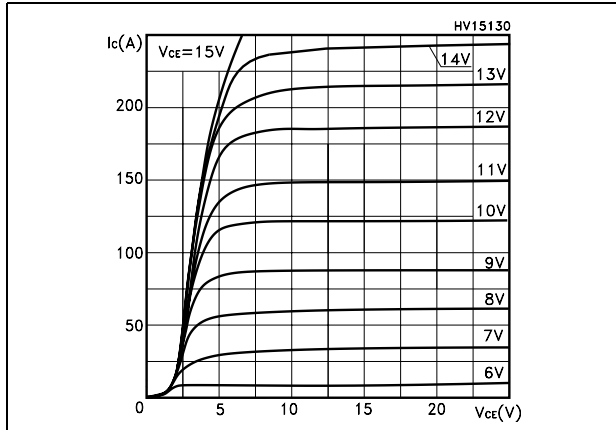
**Table 6. Switching energy (inductive load)**

Symbol	Parameter	Test conditions	Min.	Typ.	Max.	Unit
$E_{on}$ $E_{off}^{(1)}$ $E_{ts}$	Turn-on Switching Losses Turn-off Switching Losses Total Switching Losses	$V_{CC} = 480V, I_C = 20A$ $R_G = 100\Omega, V_{GE} = 15V,$ see <a href="#">Figure 15</a> and <a href="#">17</a>		0.84 7.4 8.24		mJ mJ mJ
$E_{on}$ $E_{off}^{(1)}$ $E_{ts}$	Turn-on Switching Losses Turn-off Switching Losses Total Switching Losses	$V_{CC} = 480V, I_C = 20A$ $R_G = 100\Omega, V_{GE} = 15V,$ $T_J = 125^\circ C$ see <a href="#">Figure 15</a> and <a href="#">17</a>		0.86 11.5 12.4		mJ mJ mJ

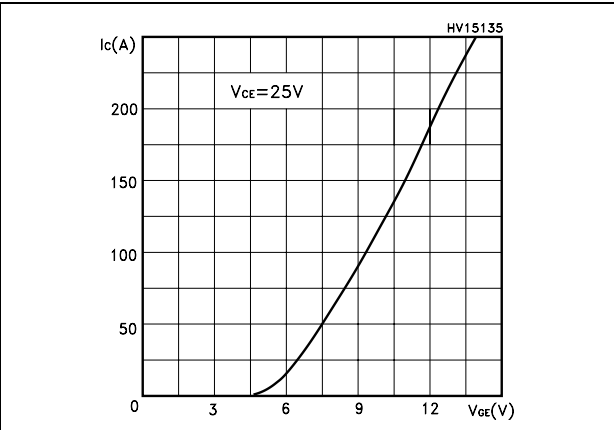
1. Turn-off losses include also the tail of the collector current

## 2.1 Electrical characteristics (curves)

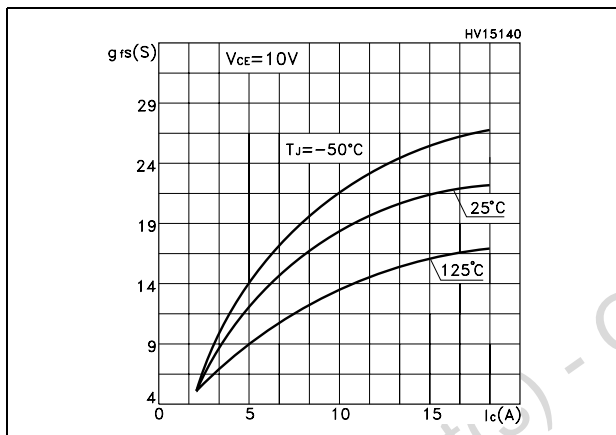
**Figure 1. Output characteristics**



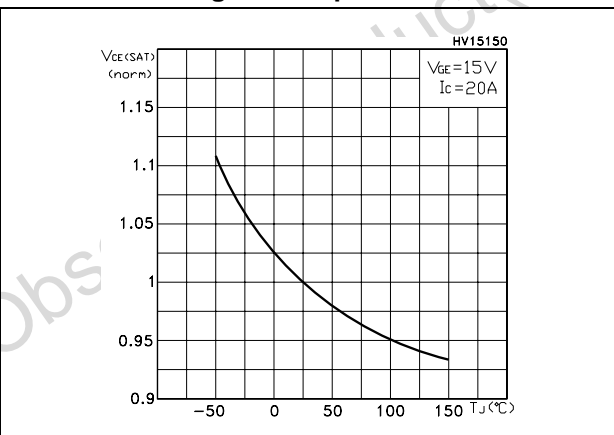
**Figure 2. Transfer characteristics**



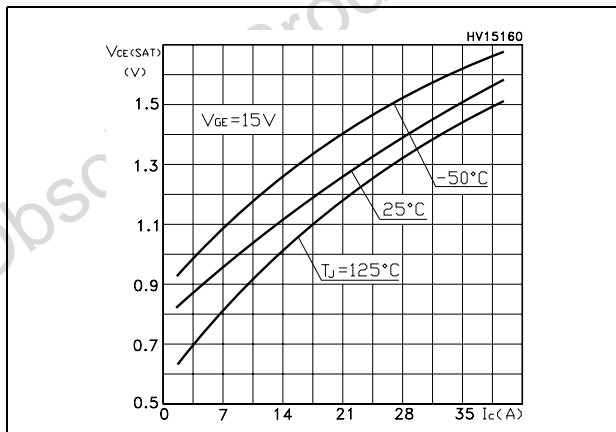
**Figure 3. Transconductance**



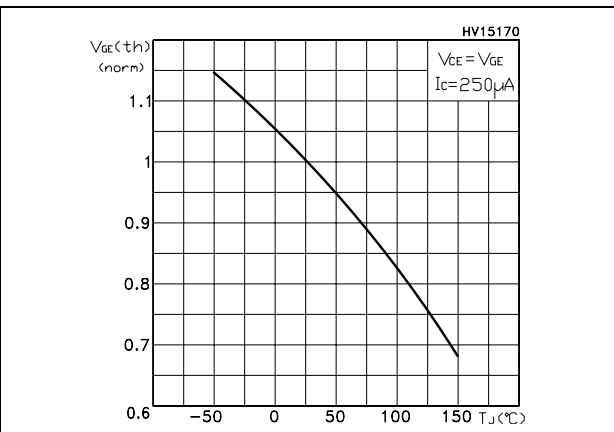
**Figure 4. Normalized collector-emitter on voltage vs temperature**



**Figure 5. Collector-emitter on voltage vs collector current**



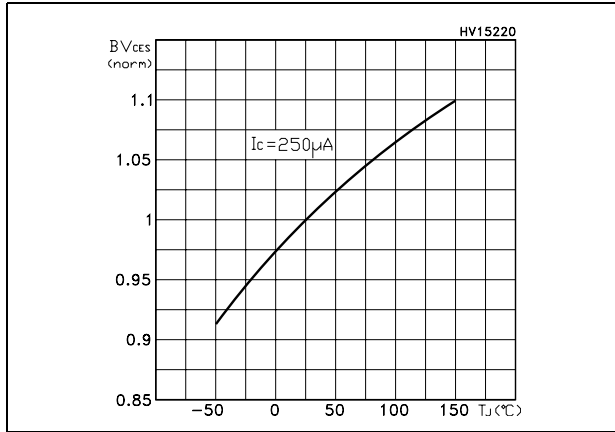
**Figure 6. Gate threshold vs temperature**



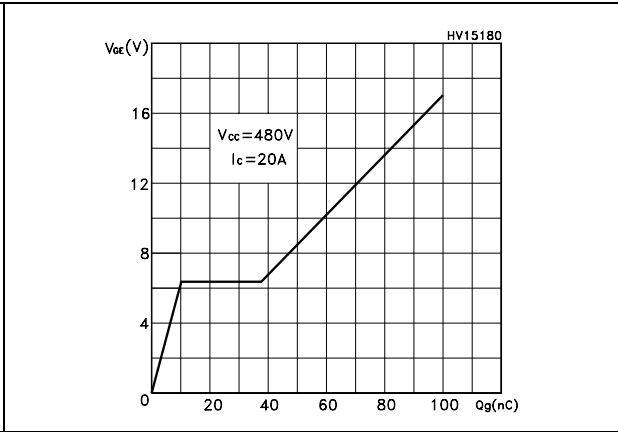
**STGW35NB60S**

Electrical characteristics

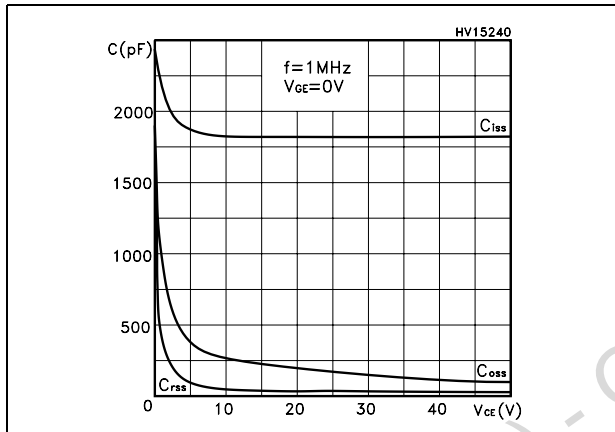
**Figure 7. Normalized breakdown voltage vs temperature**



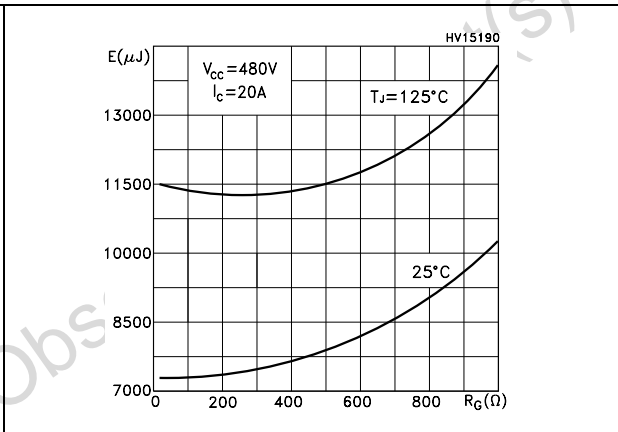
**Figure 8. Gate charge vs gate-emitter voltage**



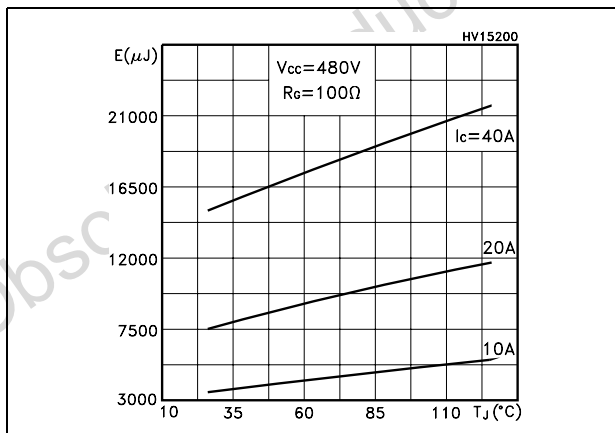
**Figure 9. Capacitance variations**



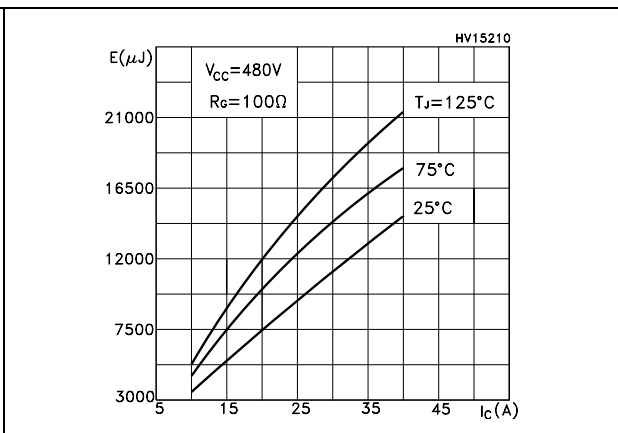
**Figure 10. Switching losses vs gate charge**



**Figure 11. Switching losses vs temperature**



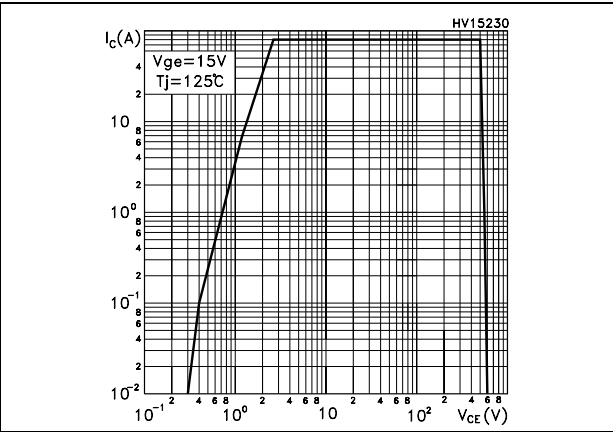
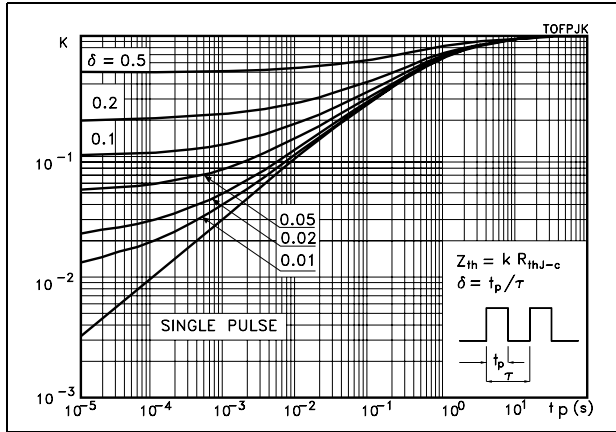
**Figure 12. Switching losses vs collector current**





**Figure 13. Thermal impedance**

**Figure 14. Turn-off SOA**



Obsolete Product(s) - Obsolete Product(s)

### 3 Test Circuits

Figure 15. Test circuit for inductive load switching

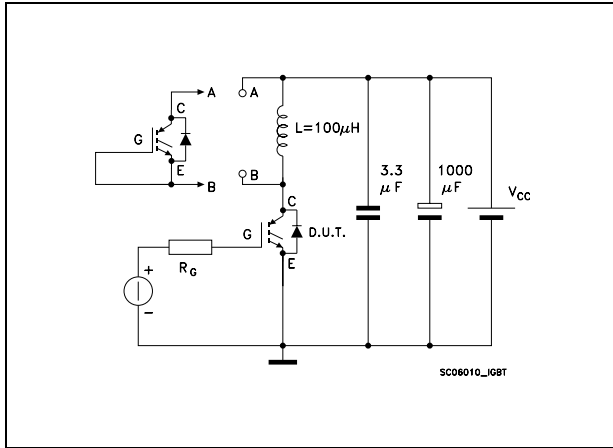


Figure 16. Gate charge test circuit

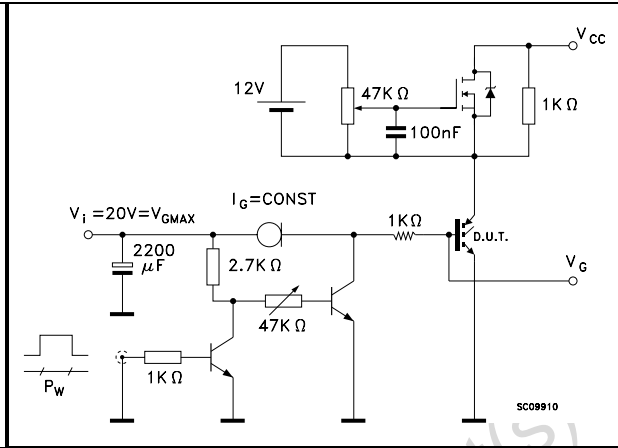
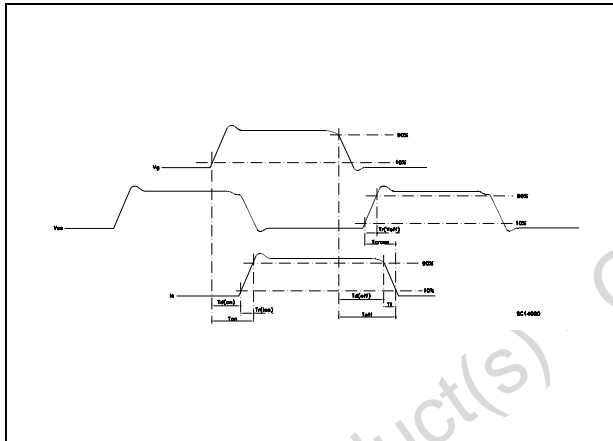


Figure 17. Switching waveform



## 4 Package mechanical data

In order to meet environmental requirements, ST offers these devices in ECOPACK® packages. These packages have a Lead-free second level interconnect. The category of second level interconnect is marked on the package and on the inner box label, in compliance with JEDEC Standard JESD97. The maximum ratings related to soldering conditions are also marked on the inner box label. ECOPACK is an ST trademark. ECOPACK specifications are available at: [www.st.com](http://www.st.com)

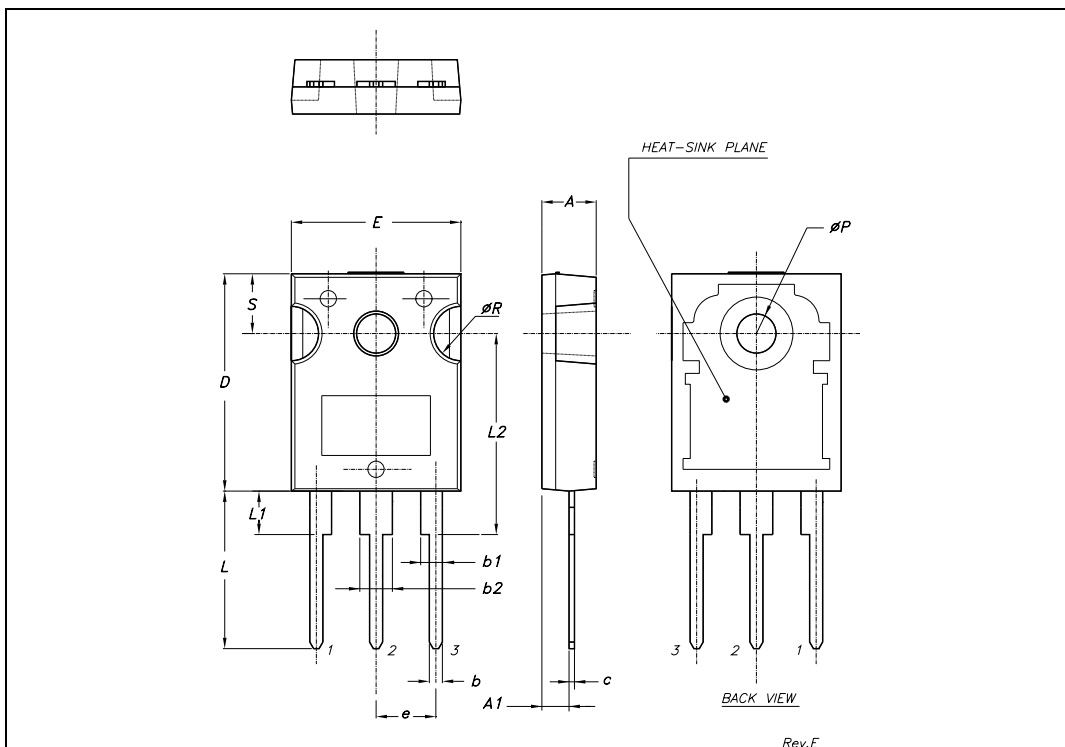
Obsolete Product(s) - Obsolete Product(s)

**STGW35NB60S**

Package mechanical data

**TO-247 MECHANICAL DATA**

DIM.	mm.			inch		
	MIN.	TYP.	MAX.	MIN.	TYP.	MAX.
A	4.85		5.15	0.19		0.20
A1	2.20		2.60	0.086		0.102
b	1.0		1.40	0.039		0.055
b1	2.0		2.40	0.079		0.094
b2	3.0		3.40	0.118		0.134
c	0.40		0.80	0.015		0.03
D	19.85		20.15	0.781		0.793
E	15.45		15.75	0.608		0.620
e		5.45			0.214	
L	14.20		14.80	0.560		0.582
L1	3.70		4.30	0.14		0.17
L2		18.50			0.728	
øP	3.55		3.65	0.140		0.143
øR	4.50		5.50	0.177		0.216
S		5.50			0.216	



## 5 Revision history

Table 7. Revision history

Date	Revision	Changes
28-Mar-2007	1	Initial release.

Obsolete Product(s) - Obsolete Product(s)

## STGW35NB60S

---

### Please Read Carefully:

Information in this document is provided solely in connection with ST products. STMicroelectronics NV and its subsidiaries ("ST") reserve the right to make changes, corrections, modifications or improvements, to this document, and the products and services described herein at any time, without notice.

All ST products are sold pursuant to ST's terms and conditions of sale.

Purchasers are solely responsible for the choice, selection and use of the ST products and services described herein, and ST assumes no liability whatsoever relating to the choice, selection or use of the ST products and services described herein.

No license, express or implied, by estoppel or otherwise, to any intellectual property rights is granted under this document. If any part of this document refers to any third party products or services it shall not be deemed a license grant by ST for the use of such third party products or services, or any intellectual property contained therein or considered as a warranty covering the use in any manner whatsoever of such third party products or services or any intellectual property contained therein.

**UNLESS OTHERWISE SET FORTH IN ST'S TERMS AND CONDITIONS OF SALE ST DISCLAIMS ANY EXPRESS OR IMPLIED WARRANTY WITH RESPECT TO THE USE AND/OR SALE OF ST PRODUCTS INCLUDING WITHOUT LIMITATION IMPLIED WARRANTIES OF MERCHANTABILITY, FITNESS FOR A PARTICULAR PURPOSE (AND THEIR EQUIVALENTS UNDER THE LAWS OF ANY JURISDICTION), OR INFRINGEMENT OF ANY PATENT, COPYRIGHT OR OTHER INTELLECTUAL PROPERTY RIGHT.**

**UNLESS EXPRESSLY APPROVED IN WRITING BY AN AUTHORIZED ST REPRESENTATIVE, ST PRODUCTS ARE NOT RECOMMENDED, AUTHORIZED OR WARRANTED FOR USE IN MILITARY, AIR CRAFT, SPACE, LIFE SAVING, OR LIFE SUSTAINING APPLICATIONS, NOR IN PRODUCTS OR SYSTEMS WHERE FAILURE OR MALFUNCTION MAY RESULT IN PERSONAL INJURY, DEATH, OR SEVERE PROPERTY OR ENVIRONMENTAL DAMAGE. ST PRODUCTS WHICH ARE NOT SPECIFIED AS "AUTOMOTIVE GRADE" MAY ONLY BE USED IN AUTOMOTIVE APPLICATIONS AT USER'S OWN RISK.**

Resale of ST products with provisions different from the statements and/or technical features set forth in this document shall immediately void any warranty granted by ST for the ST product or service described herein and shall not create or extend in any manner whatsoever, any liability of ST.

ST and the ST logo are trademarks or registered trademarks of ST in various countries.

Information in this document supersedes and replaces all information previously supplied.

The ST logo is a registered trademark of STMicroelectronics. All other names are the property of their respective owners.

© 2007 STMicroelectronics - All rights reserved

STMicroelectronics group of companies

Australia - Belgium - Brazil - Canada - China - Czech Republic - Finland - France - Germany - Hong Kong - India - Israel - Italy - Japan - Malaysia - Malta - Morocco - Singapore - Spain - Sweden - Switzerland - United Kingdom - United States of America

[www.st.com](http://www.st.com)