

Excellent Integrated System Limited

Stocking Distributor

Click to view price, real time Inventory, Delivery & Lifecycle Information:

[Honeywell Sensing and Productivity Solutions
V3-101](#)

For any questions, you can email us directly:

sales@integrated-circuit.com

MICRO SWITCH
 FREEPORT, ILLINOIS, U.S.A.
 A DIVISION OF HONEYWELL
 FED. MFG. CODE 91929

SWITCH - BASIC

CATALOG LISTING
V3-101
CKB 0100

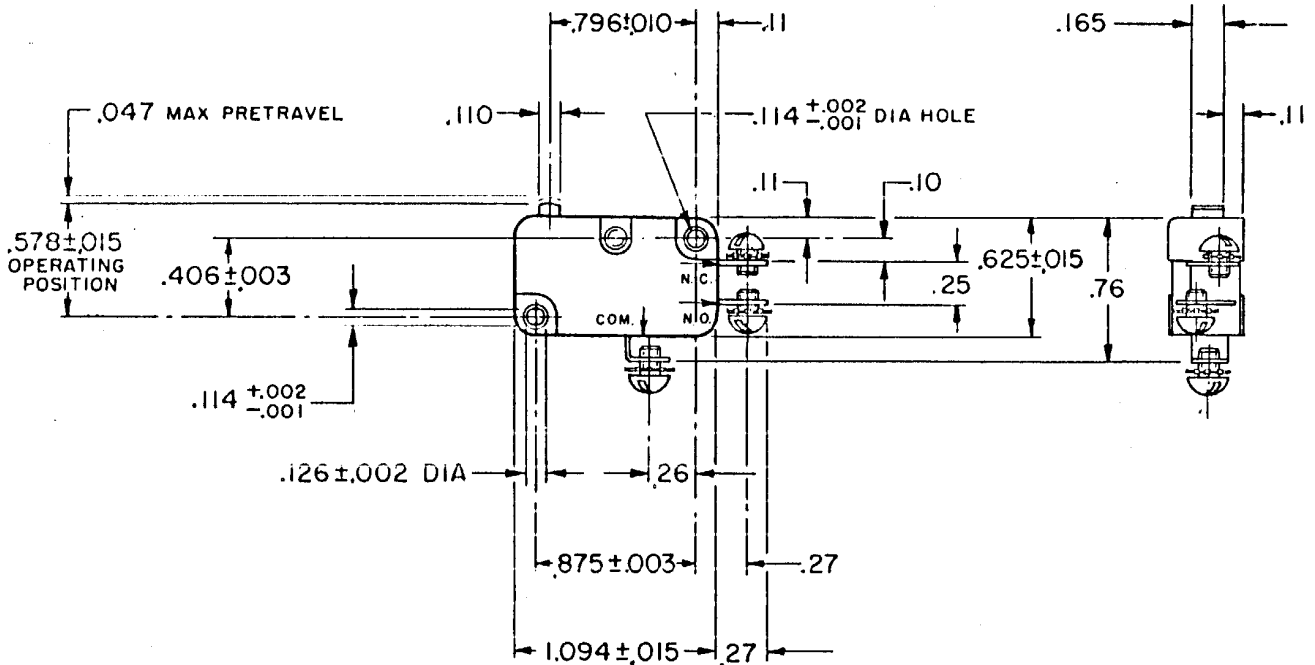
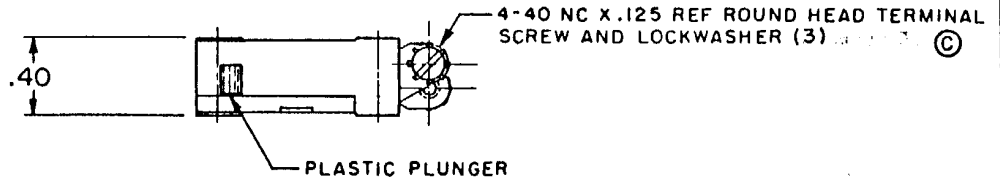
M V3-101

DRAWING NUMBER
 17

REVISIONS	CHECK
A) 020189 R R R 25 MAY 65	CS
B) 021688 M B F 3 OCT 66	CS
C) 024941 M B S 3 DEC 68	CS
D) 026075 M B S 26 AUG 69	CS
E) 031748 L S D 2 APR 73	CS
F) 32395 GLH 14 AUG 73	CS
G) 59921 SNA 29 SEPT 86	CS
H) 074475 K D R 15 APR 93	CS

RELEASE NO.

CHECK



THIS DRAWING COVERS A PROPRIETARY ITEM AND IS THE PROPERTY OF MICRO SWITCH, A DIVISION OF HONEYWELL. THIS DRAWING IS NOT TO BE COPIED OR USED WITHOUT THE APPROVAL OF MICRO SWITCH.

CHARACTERISTICS	ELECTRICAL DATA	SCALE FULL
OPERATING FORCE----- 8 OZ MAX	CONTACT ARRANGEMENT S P D T	DO NOT SCALE PRINT
RELEASE FORCE----- 2 OZ MIN	11A-1/3HP-125-250-277 VAC - L156 - 1/2A-125 VDC; 1/4A-250 VDC 4A-125 VAC "L"	UNLESS OTHERWISE NOTED DIMENSIONS ARE IN INCHES TOLERANCES ARE:
DIFFERENTIAL TRAVEL----- .006-.016	RA SA	ONE PLACE (.0) ±.030 TWO PLACE (.00) ±.015 THREE PLACE (.000) ±.005 ANGLES ±
OVERTRAVEL----- .040 MIN		
FREE POSITION----- .625 MAX		
RELEASE TRAVEL----- .007MIN		WEIGHT .017 LB

DRAWN

E R 125 MAY 65 CHECK L S D 21 MAY 65