

Excellent Integrated System Limited

Stocking Distributor

Click to view price, real time Inventory, Delivery & Lifecycle Information:

[Samtec, Inc.](#)
[ICA-308-SGG](#)

For any questions, you can email us directly:
sales@integrated-circuit.com



(2,54mm) .100"

ICA SERIES

ICA-320-SGT

ICA-624-ZEGG

AUTOMATED INSERTION DIP SOCKETS

Mates with:
APA

ICA

ROW SPACING &
NO. OF CONTACTS

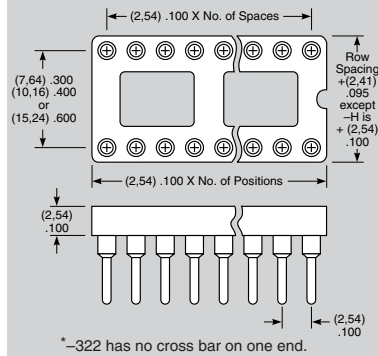
STYLE
OPTION

PLATING
OPTION

OPTION
(Leave Blank for
Standard Version)

Specify from chart below

- Side & end stackable
- Great for auto insertion
- Open body design



	Row Space	No. of Contacts
-308	.300 (7,62)	08
-314		14
-316		16
-318		18
-320		20
-322*		22
-324	.400 (10,16)	24
-328		28
-422	.600 (15,24)	22
-624		24
-628		28
-632		32
-640		40
-648		48

GG
= 30μ" (0,76μm)
Gold contact,
10μ" (0,25μm)
Gold Shell

GT
= 30μ" (0,76μm)
Gold contact,
Tin Shell

ST
= 10μ" (0,25μm)
Gold contact,
Tin shell (Styles -S
& -ZS only)

-2
= .360 (9,14)
Tail
**Wire-Wrap
Option**
Requires Style
-W or -ZW
Specify desired
suffix for shorter
Wire-Wrap tail.

-3
= .260 (6,60)
Tail
-L
= Locking
Socket
Requires Style
-S or -ZS
Requires GT
Plating Option

SPECIFICATIONS

For complete specifications
see www.samtec.com?ICA

Insulator Material:
Black Glass Filled
Polyester
except -328 is LCP
Contact: BeCu
Shell: Brass



Plating:
Au or Sn over 50μ" Ni
Flammability Rating:
UL 94V-O

Insulation Resistance:
5000 MΩ min

Temperature Range:
-55°C to +105°C with Tin
-55°C to +125°C with Gold.

Withstanding Voltage:
1000 VRMS

Current Rating: 1A
Contact Resistance:
10mΩ max

Lead Size Range:
.015" (0,38mm) to .022"
(0,56mm) DIA and most IC leads

Insertion Force:
(Single contact only)
Standard = 9 oz avg, 16 oz max;
Low Insertion Force =
2,5 oz avg, 5,5 oz max

Withdrawal Force:
(Single contact only)
Standard = 2,5 oz avg, 1,5 oz
min; Low Insertion Force =
2,0 oz avg, 0,35 oz min

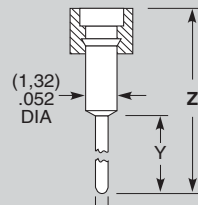
Lead-Free Solderable:
Wave only

RoHS Compliant: Yes

Note: Some sizes, styles and
options are non-standard,
non-returnable.

-S, -ZS, -ZA

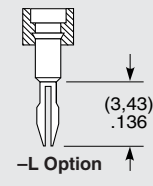
= Printed Circuit
-ZS & -ZA = Low Insertion Force



LEAD STYLE	X DIA	Y TAIL	Z
-S or -ZS	(0,51) .020	(3,18) .125	(7,62) .300
-ZA	(0,51) .020	(4,57) .180	(8,89) .350

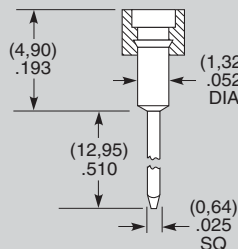
Insertion Depth = .095" (2,41) to .145" (3,68):
Style S Component Part No. = SC-1P1
Style ZS Component Part No. = EZ-1P1
Style ZA Component Part No. = EZ-6P1
Option L Component Part No. = SC-1L1 or EZ-1L1

Locking lead
available with -S
and -ZS.
See OPTION.



-W, -ZW

= Wire-Wrap
ZW = Low Insertion Force

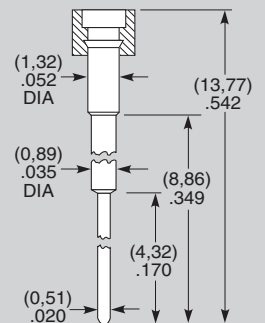


Shorter wire-wrap tail
lengths available.
See OPTION.

Insertion Depth = .125" (3,18) to .157" (3,99)
Style W Component Part No. = SC-1W1(1)
Style ZW Component Part No. = EZ-1W1(1)
Style W-2 Component Part No. = SC-1W1(2)
Style ZW-2 Component Part No. = EZ-1W1(2)
Style W-3 Component Part No. = SC-1W1(3)
Style ZW-3 Component Part No. = EZ-1W1(3)

-ZE

= Elevated
Low Insertion Force



Insertion Depth = .125" (3,18) to .170" (4,32)
Style ZE Component Part No. = EZ-2P3

Due to technical progress, all designs, specifications and components are subject to change without notice.

WWW.SAMTEC.COM