

## Excellent Integrated System Limited

Stocking Distributor

Click to view price, real time Inventory, Delivery & Lifecycle Information:

[Molex Connector Corporation](#)  
[0351410201](#)

For any questions, you can email us directly:

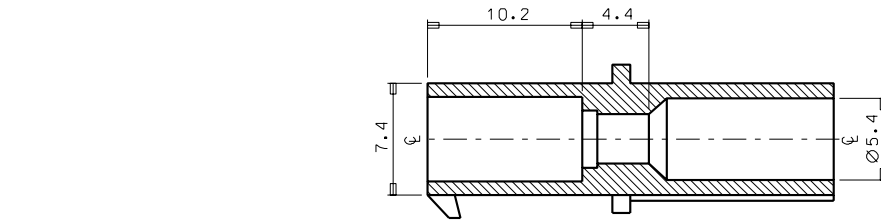
[sales@integrated-circuit.com](mailto:sales@integrated-circuit.com)

ENG. NO. SD 35141-020\*

EDP NO.

SIMILAR ITEM

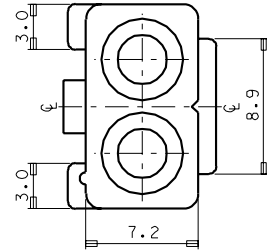
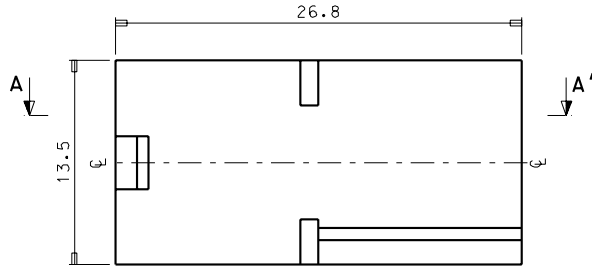
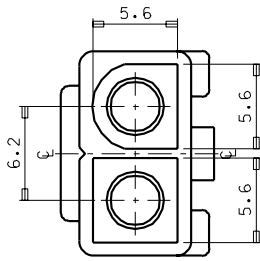
PROJECT NO.



SEC' : A-A''

NOTES

1. MATERIAL : NYLON (UL94V-2)
2. APPLICABLE TERMINAL : 35727-0201
3. MATED HOUSING : 35143-020\*
4. COLOR : 35141-0201 (NATURAL)  
35141-0202 (RED)



				MATERIAL	SEE NOTES	MOLEX-KOREA CO.,LTD.	
D	REVISED	96	5.3	GENERAL TOLERANCE			
C	REVISED	93-018	93	DIMENSION : ±0.25		J. S. KANG	
B	REVISED		92	ANGLE : ±1°		APP'D BY	SCALE 4/1
A	NEW RELEASED		92	DIMENSION CLASSIFICATION			
LTR	REVISION RECORD	ECN	DATE	(▲) : CRITICAL (▼) : MAJOR (○) : REFERENCE		TITLE :	SHEET
				ASS'Y PART		Ø 2.0 W/W CONN'	1 of 1
				DESCRIPTION	ENG. NO.	RECEPTACLE HSG-2P	REV
				REVISION RECORD	DESCRIPTION	ENG. NO.	D
				REVISION RECORD	DESCRIPTION	SD 35141-020*	

s1410201.dgn

THIS DRAWING CONTAINS INFORMATION THAT IS PROPRIETARY TO MOLEX(KOREA) AND SHOULD NOT BE USED WITHOUT WRITTEN PERMISSION MX-A3(ANSI:290,420)