

Excellent Integrated System Limited

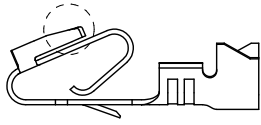
Stocking Distributor

Click to view price, real time Inventory, Delivery & Lifecycle Information:

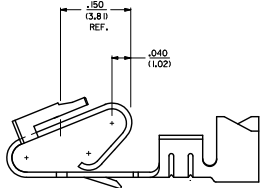
[Molex Connector Corporation](#)
[0008520113](#)

For any questions, you can email us directly:

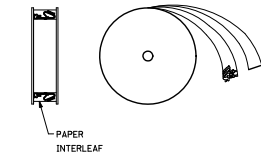
sales@integrated-circuit.com



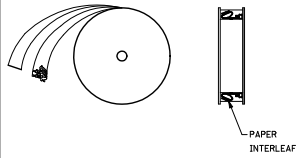
ALTERNATE GEOMETRY
SEE NOTE 10



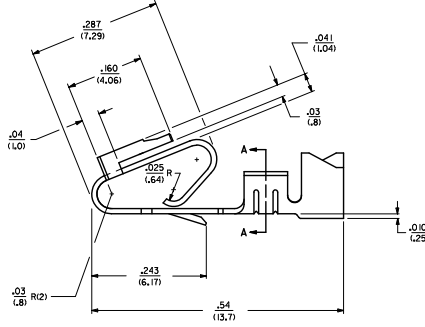
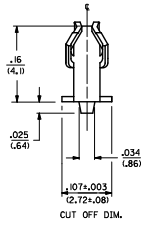
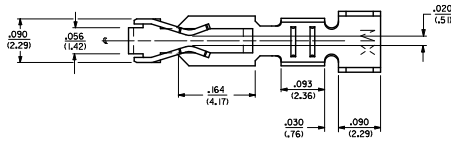
SELECTIVE PLATING
LOCATION



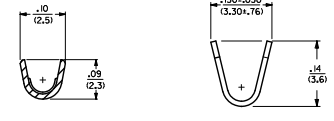
WINDING DETAIL 'A'



WINDING DETAIL 'B'



- NOTES:
1. MATERIAL: SEE LEGEND
2. FINISH:
909 - OVERALL HOT TIN DIF. .000100/(0.00254) MIN.
154 - OVERALL TIN: .000100/(0.00254) MIN. OVER .000050/(0.00127) MIN. NICKEL.
555 - SELECT HARD GOLD: .000015/(0.00038) MIN. OVERALL NICKEL: .000030/(0.00076) MIN.
558 - SELECT HARD GOLD: .000030/(0.00076) MIN. OVERALL NICKEL: .000050/(0.00127) MIN.
561 - SELECT HARD GOLD FLASH: .000002/(0.00005) MIN. OVERALL NICKEL: .000050/(0.00127) MIN.
3. PRODUCT SPECIFICATIONS: PS-40-02
4. PACKAGING SPECIFICATION: CHAIN FORM: SEE PK-6838-001 LOOSE FORM: SEE PK-7759-001
5. TERMINAL FOR USE IN HOUSING SERIES 6442 AND 41995.
6. SEE 7258 SERIES FOR THIS PART WITH CRAMP FOR 22-26 AWG. WIRE.
7. CRAMP FOR 18 TO 20 GA. WIRE WITH MAX. INSULATION DIA. OF .100/(2.54). STRIP LENGTH OF: .225/(5.71) / (3.18/2.54)
8. DIMENSIONS GIVEN ACROSS CENTERLINES ARE SYMMETRICAL ABOUT THOSE CENTERLINES WITHIN HALF THE TOTAL TOLERANCE.
9. THIS PART CONFORMS TO CLASS B REQUIREMENTS OF COSMETIC SPECIFICATION PS-45499-002.
10. ALTERNATE GEOMETRY PRESENT ON SOME PART NUMBERS. SEE SHEET 2.



SECTION A-A

- LEGEND: 6838- ()
WINDING
A= PER DETAIL A
BLANK= PER DETAIL B
FORM
BLANK= CHAIN
L= LOOSE
PLATING
SEE NOTE 2
- MATERIAL:
L277/0106 THK
BLANK=BRASS
A=PHOS BRONZE

107 TO 154 PLTG ECN NO. UEP202-1821 DRAWING FROM 2017/01/04 CHECKED BY 2017/01/05 APPROVED BY 2017/01/05 AR	QUALITY SYMBOLS	GENERAL TOLERANCES (UNLESS SPECIFIED)	DIMENSION STYLE	SCALE	DESIGN UNITS	THIRD ANGLE PROJECTION	
	∇=0 ∇=0 ∇=0	4 PLACES ±.005 3 PLACES ±.010 2 PLACES ±0.25 1 PLACE ±0.36 ANGULAR ±1/2°	IN/MM INCH IN/100 INCH	DRAWN BY GUZIK CHECKED BY PATEL APPROVED BY LENZ	DATE 11/15/89 DATE 11/15/89 DATE 11/15/89	INCH INCH	TRIFURCON TERMINAL CRIMP TYPE .156 CENTERS 18 TO 20 AWG WIRE MOLEX INCORPORATED
	DRAFT WHERE APPLICABLE MUST REMAIN WITHIN DIMENSIONS	MATERIAL NO. SEE CHART	DOCUMENT NO. SD-6838	SHEET NO. 1 OF 2			
	SIZE D THIS DRAWING CONTAINS INFORMATION THAT IS PROPRIETARY TO MOLEX INCORPORATED AND SHOULD NOT BE USED WITHOUT WRITTEN PERMISSION						

6838-(*)*-*			6838-A(*)*-*		
PART NO.	ENG. NO.		PART NO.	ENG. NO.	
08-50-0187	6838-(P909)	SEE NOTE 1	08-58-0187	6838-A(P558)	
08-50-0189	6838-(P909)L	SEE NOTE 1	08-58-0189	6838-A(P558)L	
08-50-0275	6838-(P909)-A		08-52-0112	6838-A(P909)	SEE NOTE 1
			08-52-0113	6838-A(P909)L	SEE NOTE 1
			08-50-0024	6838-A(154)	
			08-50-0251	6838-A(154)L	
			08-58-0105	6838-A(P555)	
			08-58-0106	6838-A(P555)L	
			08-58-0110	6838-A(P561)	SEE NOTE 1
			08-58-0111	6838-A(P561)L	SEE NOTE 1
			08-58-0118	6838-A(561)	
			08-58-0119	6838-A(561)L	

NOTES:

1. PART MANUFACTURED WITH ALTERNATE GEOMETRY. SEE SHEET 1.

SEE SHEET 1 EC NO. 062702-821 DRAWING NO. 2017/01/04 CHECKED BY 2017/01/05 APPROVED BY 2017/01/05 AR REV	QUALITY SYMBOLS	GENERAL TOLERANCES (UNLESS SPECIFIED)	DIMENSION STYLE	SCALE	DESIGN UNITS	THIRD ANGLE PROJECTION
	▽=0	4 PLACES ±--- ±---	IN/MM	---	INCH	
	▽=0	3 PLACES ±--- ±---	DRAWN BY	DATE	TITLE	
	▽=0	2 PLACES ±--- ±---	GUZIK	11/15/89	TRIFURCON TERMINAL CRIMP TYPE .456 CENTERS 18 TO 20 AWG WIRE	
	1 PLACE ±--- ±---	ANGULAR ±1/2°	CHECKED BY	DATE		
			PATEL	11/15/89		
			APPROVED BY	DATE		
			LENZ	11/15/89		
			DRAFT WHERE APPLICABLE MUST REMAIN WITHIN DIMENSIONS			
			RATERIAL NO.	SEE CHART	DOCUMENT NO.	
			SIZE	D THIS DRAWING CONTAINS INFORMATION THAT IS PROPRIETARY TO MOLEX INCORPORATED AND SHOULD NOT BE USED WITHOUT WRITTEN PERMISSION		
					MOLEX MOLEX INCORPORATED	
					SD-6838	2 OF 2