

Excellent Integrated System Limited

Stocking Distributor

Click to view price, real time Inventory, Delivery & Lifecycle Information:

[Schurter](#)
[0040.1061](#)

For any questions, you can email us directly:

sales@integrated-circuit.com

PS 1061 Test Probe, Ø 2 mm, 10 A



Description

- Test Probe
- diameter 2.0 mm

Weblinks

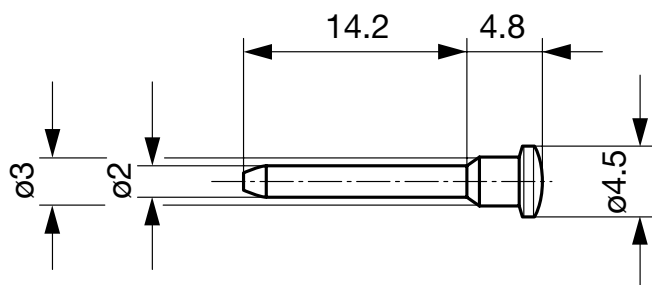
[pdf-datasheet](#), [html-datasheet](#), [General Product Information](#), [RoHS](#), [CHINA-RoHS](#), [REACH](#), [Distributor-Stock-Check](#), [Accessories](#), [Detailed request for product](#)

Technical Data

Diameter	2 mm
Rated current	10 A
Allowable Operation Temp.	-25 °C to 70 °C

Resistance to Soldering Heat	260 °C / 5 sec acc. to IEC 60068-2-20 , Test Tb, method 1A
Weight	0.5 g
Material: Housing	Thermoplastic (PC), UL 94V-2
Surface of contacts	gold plated , Thickness 1.0 µm

Dimensions



All Variants

Product group	Color	Order Number
Test Probe	red	0040.1062

Most Popular.

Availability for all products can be searched real-time: <http://www.schurter.com/Stock-Check/Stock-Check-SCHURTER>

Packaging unit 100 Pcs

PS 1061

Test Jacks & Probes
www.schurter.com/PG08

Mating Outlets/Connectors

Category / Description



[Test Jacks & Probes Overview complete](#)

PB 1011 Test Jack, PCB Mounting, Ø 2 mm, 10 A	PB 1011
PB 1021 Test Jack, PCB Mounting, Ø 2 mm, 6.3 A	PB 1021
PB 1101 Test Jack, PCB Mounting, Ø 2 mm, 10 A	PB 1101
PB 1111 Test Jack, PCB Mounting, Ø 2 mm, 10 A	PB 1111
PB 1151 Test Jack, PCB Mounting, Ø 2 mm, 6.3 A	PB 1151

[Test Jacks & Probes further types to PS 1061](#)

...