

Excellent Integrated System Limited

Stocking Distributor

Click to view price, real time Inventory, Delivery & Lifecycle Information:

[Schurter](#)
[0040.1211](#)

For any questions, you can email us directly:

sales@integrated-circuit.com

PBD 1211 Test Jack, PCB Mounting, Ø 2 mm, 6.3 A, flux-proof



Description

- PCB Mounting
- Test Jack, diameter 2.0 mm
- measuring and testing during operation
- Open, close with test probe
- Resilient contacts, gold plated
- Flux-proof

Weblinks

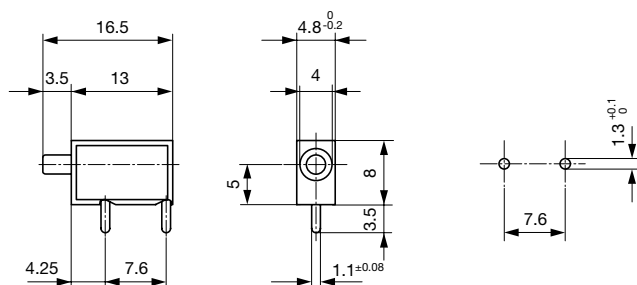
[pdf-datasheet](#), [html-datasheet](#), [General Product Information](#), [RoHS](#), [CHINA-RoHS](#), [REACH](#), [Distributor-Stock-Check](#), [Accessories](#), [Detailed request for product](#)

Technical Data

Diameter	2 mm
Rated current	6.3 A
Admissible switching power	@ 250 Insertions: 150 W / max. 2 A or 75 VDC 300 W / max. 3 A or 50 VAC
	@ 1000 Insertions: 100 W / max. 1 A or 75 VDC 150 W / max. 2 A or 50 VAC
Contact resistance	< 10 mΩ at 20 mV
Insulation Resistance	> 5 MΩ (500VDC; 1 min)
Dielectric strength	> 2 kV (50 Hz; 1 min)
Clearance and Creepage Distance	> 2 mm
Allowable Operation Temp.	-25 °C to 70 °C

Resistance to Vibration	acc. to IEC 60068-2-6, test Fc
Solderability	235 °C / 2 sec acc. to IEC 60068-2-20 , Test Ta, method 1
Resistance to Soldering Heat	260 °C / 5 sec acc. to IEC 60068-2-20 , Test Tb, method 1A
Weight	0.6 g
Material: Housing	Thermoplastic (PC), UL 94V-2
Surface of contacts	gold plated , Thickness 2.5 μm

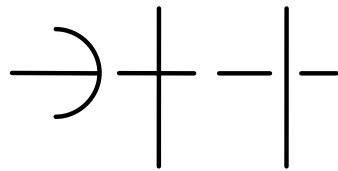
Dimensions



PBD 1211

Test Jacks & Probes
 www.schurter.com/PG08

Diagrams



All Variants

Product group	Color	Order Number
Test Jack	black	0040.1211
Test Jack	red	0040.1212

Most Popular.

Availability for all products can be searched real-time:<http://www.schurter.com/Stock-Check/Stock-Check-SCHURTER>

Packaging unit 100 Pcs

Mating Inlets/Plugs

Category / Description



Test Jacks & Probes Overview complete

PS 1061 Test Probe, Ø 2 mm, 10 A

PS 1061

Test Jacks & Probes further types to PBD 1211