

Excellent Integrated System Limited

Stocking Distributor

Click to view price, real time Inventory, Delivery & Lifecycle Information:

[Schurter](#)
[1041.6500](#)

For any questions, you can email us directly:

sales@integrated-circuit.com

SCHURTER GmbH
D – 79346 Endingen
www.schurter.com



Product manual

Metallic Panel

CONTENTS

1. DESCRIPTION

2. TECHNICAL DATA AND DIMENSIONAL DRAWINGS

- 2.1. Technical Data
- 2.2. Dimensions 12 key Keypad Front Mounting
- 2.3. Dimensions 16 key Keypad Front Mounting
- 2.4. Dimensions 12 key Keypad Rear Mounting
- 2.5. Dimensions 16 key Keypad Rear Mounting
- 2.6. Circuit Diagram

3. ORDER NUMBERS

- 3.1. Lettering

4. PACKAGING

5. QUALIFICATION TESTS

- 5.1. IP Protection Class
- 5.2. IK Protection Class

SCHURTER GmbH
 D – 79346 Endingen
www.schurter.com



1 Description

Due to the combined construction of a tactile membrane keypad with metallic surface, the keypad is protected against vandalism and also shows an excellent tactile feedback. The stainless steel surface is laser lettered. In addition to the standard lettering, customized lettering and symbols are available on request.

2 Technical Data and Dimensional Drawings

2.1 Technical Data

Electrical Data		
Contacts Material		Silver + Carbon
Switching Voltage max.	(V AC/DC)	30/42
Switching Voltage min.	(mV AC/DC)	20
Switching Current max.	(mA)	50
Switching Current min.	(mA)	1
Lifetime electrical	(mill.)	> 1
Rated Breaking Capacity	(W)	0,6
Trace Resistance per cm (Width 0,7 mm, Thickness 10 µm)	(Ω)	max. 1
Dielectric Strength	(V)	500
Insulation Resistance (DIN42115)	(MΩ)	> 100
Duration of Bounce (DIN 42115)	(ms)	typ. < 5

Mechanical Data		
Actuating Force	(N)	3
Actuating Travel	(mm)	0.45
IP-Protection Class Front Side/Contact Area	(IP)	40/65
IK-Protection Class (DIN EN 50102)	(IK)	IK 07
Lifetime mechanical	(mill.)	> 2

SCHURTER GmbH
D – 79346 Endingen
www.schurter.com



Climatical Data	
Operating Temperature (°C)	-25 to +85
Storage Temperature (°C)	-40 to +85

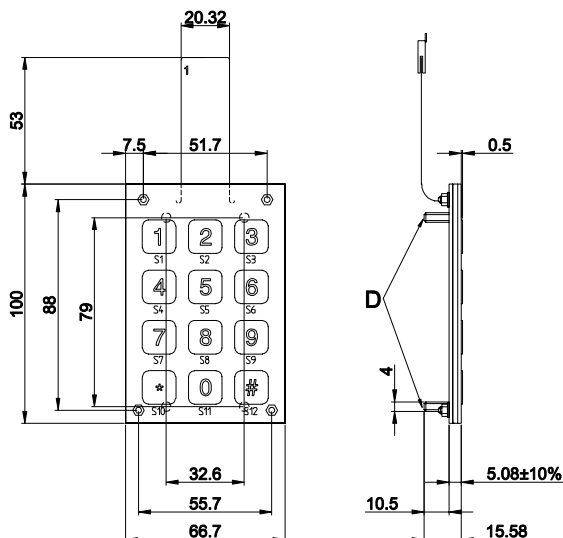
Material	
Front Panel	Stainless Steel with welding bolts
Keys	Stainless Steel
Supporting Plate	Stainless Steel or Aluminum

SCHURTER GmbH
D – 79346 Endingen
www.schurter.com

SCHURTER
ELECTRONIC COMPONENTS

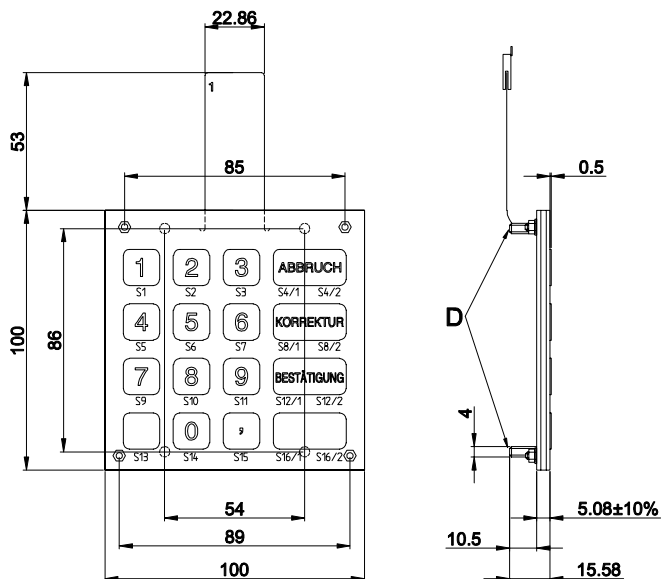
2.2 Dimensions 12 key Keypad Front Mounting

12 key points (67.2x100.5)

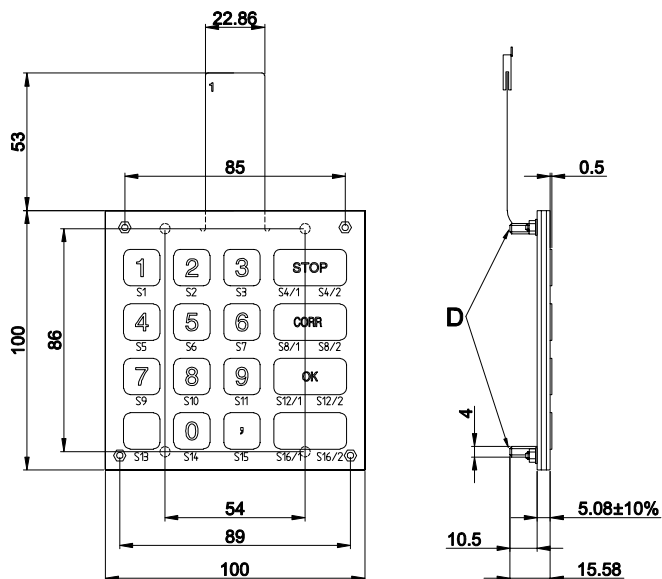


2.3 Dimensions 16 Key Keypad Front Mounting

16 key points (100.5x100.5) Lettering German



16 key points (100.5x100.5) Lettering English



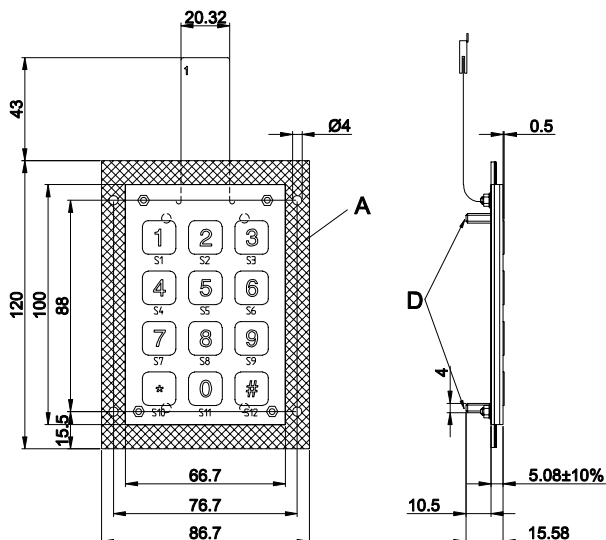
A Mounting Frame
D Self-clinching studs M4x12

SCHURTER GmbH
D – 79346 Endingen
www.schurter.com

SCHURTER
ELECTRONIC COMPONENTS

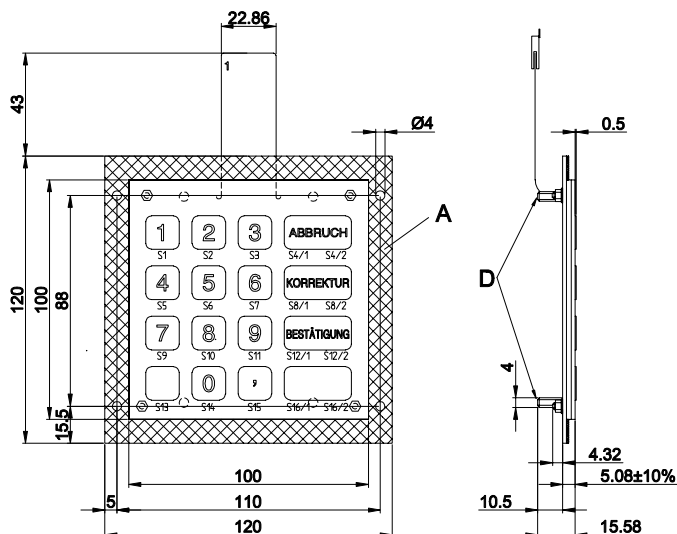
2.4 Dimensions 12 key Keypad Rear Mounting

12 key points (67.2x100.5)

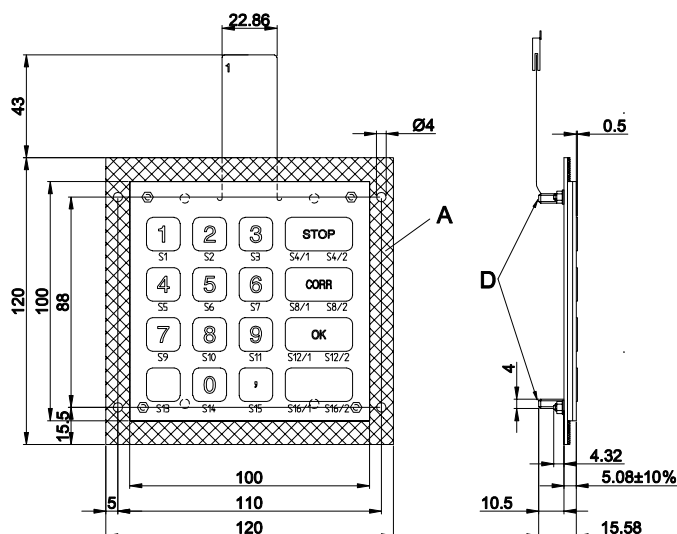


2.5 Dimensions 16 key Keypad Rear Mounting

16 key points (100.5x100.5) Lettering German



16 key points (100.5x100.5) Lettering English



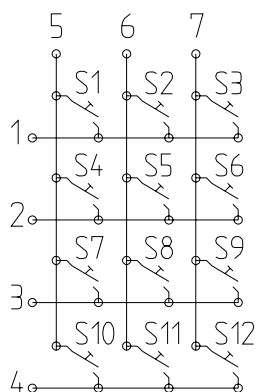
A Mounting Frame
D Self-clinching studs M4x12

SCHURTER GmbH
D – 79346 Endingen
www.schurter.com

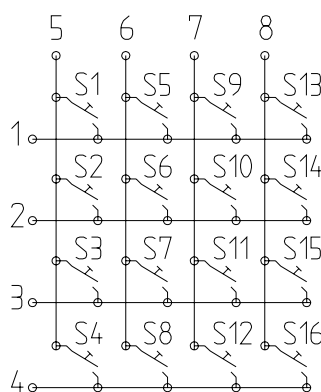
SCHURTER
ELECTRONIC COMPONENTS

2.6 Circuit Diagram

12 key Keypad



16 key Keypad



3 Order Number

	12 key Keypad	16 key Keypad
Mounting Dimensions (mm)	67.2x100.5	100.5x100.5
Lettering German		
Front Mounting	1041.3500	1041.3000
Rear Mounting	1041.6500	1041.6000
Lettering English		
Front Mounting	---	1041.3100
Rear Mounting	---	1041.6100

3.1 Lettering

The lettering showed in the images under 2.2 to 2.5 is standard.
Customized versions, lettering or colours of the actuators are available on request.

SCHURTER GmbH
D – 79346 Endingen
www.schurter.com

SCHURTER
ELECTRONIC COMPONENTS

4 Packaging

12 key Keypad	5	Reusable packaging
16 key Keypad	5	Reusable packaging



SCHURTER GmbH
D – 79346 Endingen
www.schurter.com



5 Qualification Tests

5.1 IP Protection Class

IP Protection Class IEC/DIN/EN/ 60529	Front Side	IP 40
	Contact Area	IP 65

5.2 IK Protection Class

Test carried out centrally

IK Protection Class DIN EN 50102	IK 07
----------------------------------	-------

Test carried out with free fall hammer of steel.